

# Thermal Controller

## IP-TC1

### DIGITAL ELECTRONIC TEMPERATURE CONTROLLER

### 200-240V AC

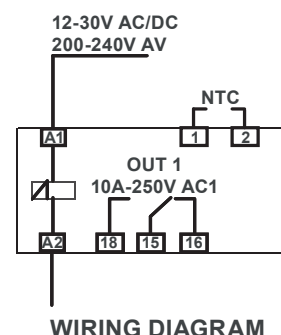
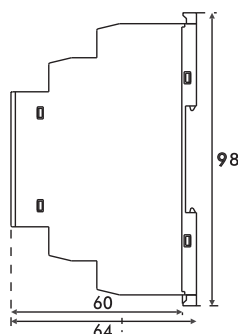
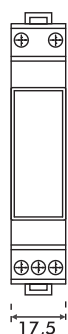
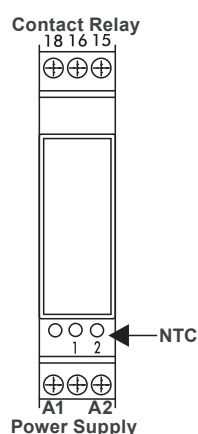
**Compact size – 1 DIN module (17,5mm) or 2 DIN modules (35mm). Digital adjustment of temperature. Appropriate for temperature control inside electrical panel (fan and resistor control). NTC probe input, 1 or 2 relay outputs.**

IP Enclosures provide a range of thermal control products for electrical enclosures. The range of controllers are suitable for use with IP Enclosures range of heating and cooling products. The range includes thermostats, hygrostats, electronic thermostat temperature controllers and fan speed controllers. IP Enclosures thermal control products are manufactured to the highest quality in Italy.

**Standards (& Conformities):** 2014/35/EU: IEC 60598-1, IEC 60730-1, IEC 60730-2-9  
2014/30/EU: IEC 55014, IEC 61000-3-3, IEC 61000-3-2, RoHS



| Features                           | Unit    | IP-TC1   |
|------------------------------------|---------|--|
| Power Supply                       | V       | 200-240V AC  |
| Input                              | -       | NTC (10k - 25°C)   |
| Relay                              | -       | 1 SPDT output (10A-AC1)  |
| Control                            | -       | ON/OFF   |
| Overall Accuracy                   | %       | + / - 0.5 Full scale   |
| Display Resolution                 | -       | 1  |
| Measurement Range                  | °C      | NTC -20 ~ +65°C Probe on the controller / NTC -35 ~ +99°C external probe |
| Sampling Rate                      | Hz      | 12   |
| Parameters Programming             | -       | By keyboard  |
| Operating Temperature              | °C (°F) | -20 / +65 (-4 / +149)  |
| Operating Humidity (No Condensate) | RH%     | 30 ~ 95  |
| Housing                            | -       | Self-extinguishing plastic   |
| Dimensions HxWxD                   | mm      | 17.5H x 64W x 98D - 1 DIN rail module                                    |
| Connections                        | -       | 2.5mm <sup>2</sup> Screw terminal block                                  |
| Mounting                           | -       | Clip for mounting on DIN rail 35 mm EN50022                              |
| Weight (With Packaging)            | Kg      | 0.045 (0.055)  |
| Conformity / Certification         | -       | CE   |



WIRING DIAGRAM

# Thermal Controller

# IP-TC1

**DIGITAL ELECTRONIC TEMPERATURE CONTROLLER**

**200-240V AC**

## **STANDARDS, CONFORMITIES & CERTIFICATES:**

Low Voltage Directive 2014/35/EU Compliance: IEC 60598-1, IEC 60730-1, IEC 60730-2-9

Electromagnetic Compatibility Directive 2014/30/EU Compliance: IEC 55014, IEC 61000-3-3, IEC 61000-3-2

CE Certificate of Compliance: Certificate SZT-24 MA 33485-1

Products are manufactured to Quality, Safety and Environmental Standards.