

IP66 19" Data Racks

IP-SDW9RU60-BLK

WALL MOUNT | STEEL | SINGLE DOOR | IP66

19" 9RU x 600D

IP Enclosures SDW range of IP66 19" data racks are designed for outdoor applications to house sensitive data network equipment in harsh environments. They are suitable for internal and external installations. All IP Enclosures are built to precision to ensure consistent high quality standards.

Protection: IP66 IK10

Standard: IEC/EN62208, IEC/EN/AS60529, EIA-310-D, RoHS 

Unit Size: 9RU

Material:

- Enclosure Body: 1.5mm galvanised steel sheet
- Enclosure Door: 1.5mm galvanised steel sheet
- 19" Data Rack Rails: 1.5mm galvanised steel sheet
- Enclosure Seal: Polyurethane. UL listed.

Body & 19" Rails: The robust monoblock body is 1.5mm galvanised steel sheet. Flat face sealing surfaces increase seal life. Pre-fitted blind nutserts are incorporated to accommodate wall mounting brackets to eliminate drilling to retain IP rating. The profiled roof design protrudes past the seal, flush with the front of the door face. A galvanised steel gland plate is also incorporated into the bottom face. 19" data rack rails are fitted. 600mm deep racks include front and rear rails.

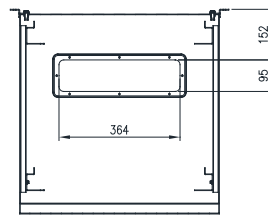
Door: The surface mounted door is 1.5mm galvanised steel sheet. It incorporates concealed removable hinges with captive pins. Doors are also designed for a 110° opening. Each door incorporates a high quality machine-applied foamed in place (FIP) Polyurethane seal.

Seal: A high quality machine-applied full perimeter UL listed Polyurethane seal foamed in place (FIP) provides excellent sealing over a long life. Temperature resistance -40°C to 80°C (160°C short term loading).

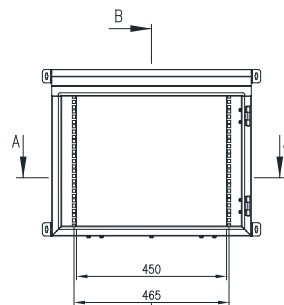
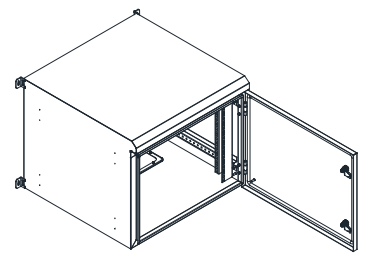
Lock: Chrome 5mm double bit insert quarter turn lock with key. A full range of locking solutions are available upon request.

Gland Plate: Gland plates are incorporated into the bottom face of the enclosure for cable management. The size and quantity vary according to enclosure size.

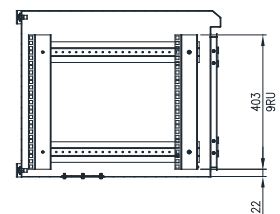
Surface Treatment: UL approved polyester powder-coated with a smooth gloss finish, 80-120 micron average thickness, providing excellent exterior durability and color retention. Standard Colour: RAL9005 Black.



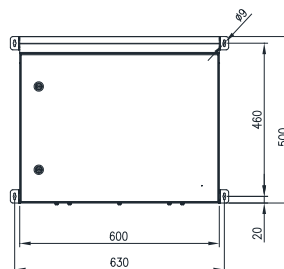
SECTION AA



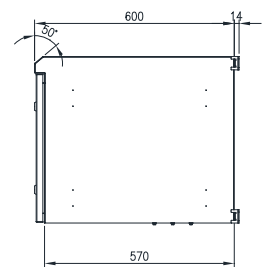
FRONT VIEW - DOOR REMOVED



SECTION BB



FRONT VIEW



SIDE VIEW

