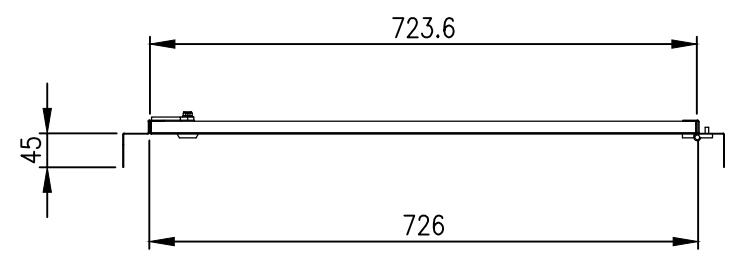
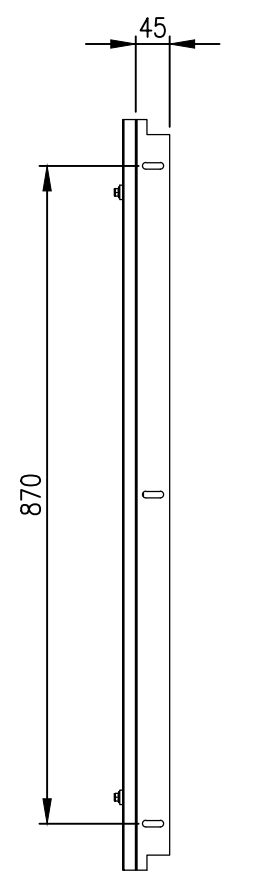


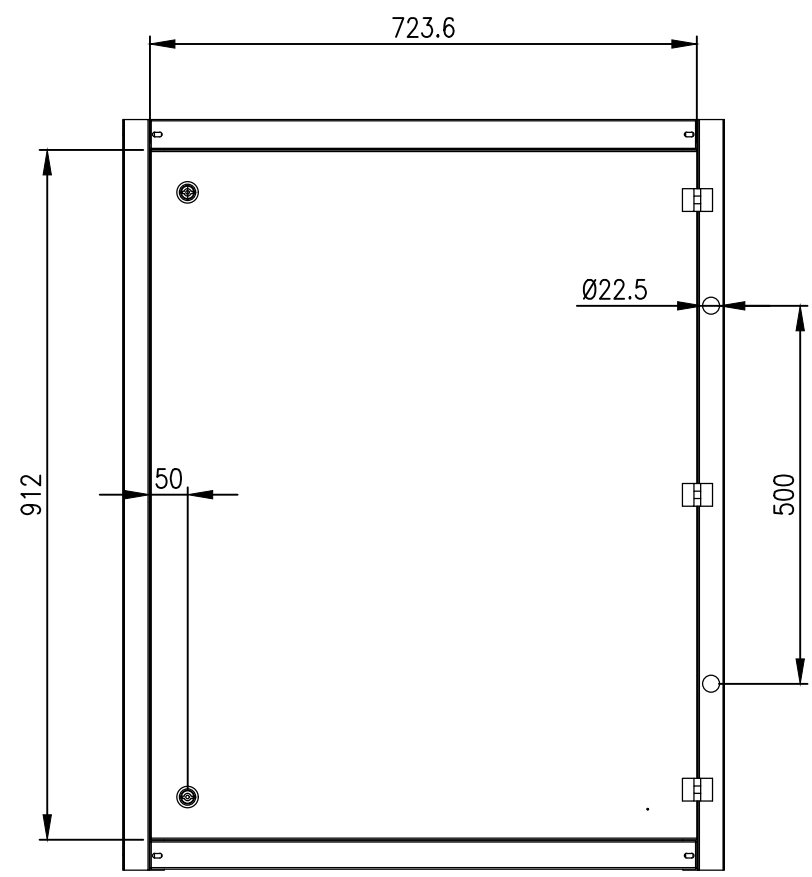
RevNo	Revision note	Date	Signature	Checked
0	GENERAL REVISION		IP	IP



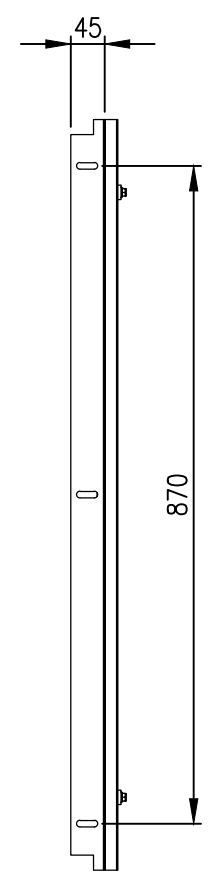
TOP VIEW



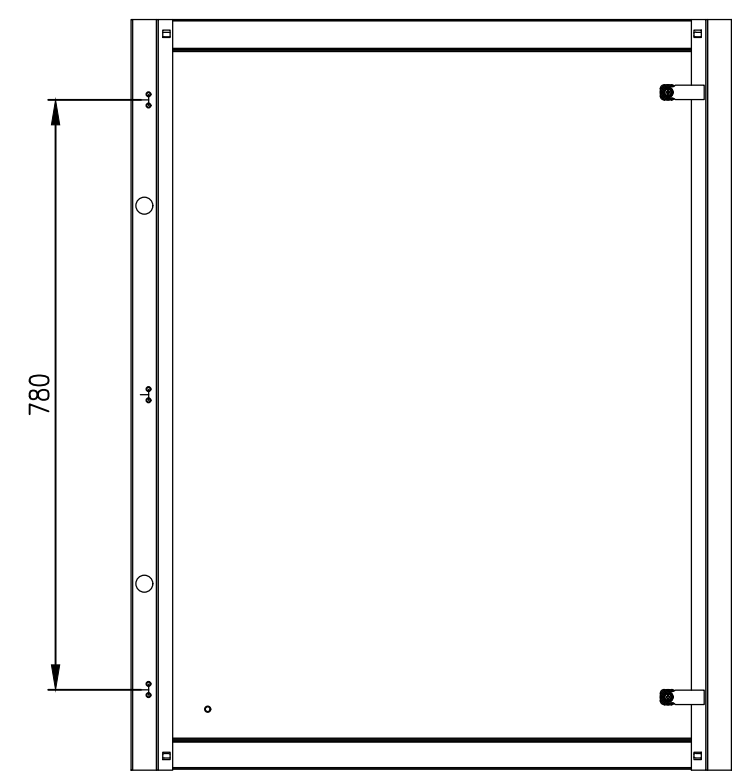
LEFT SIDE VERTICAL FRAME



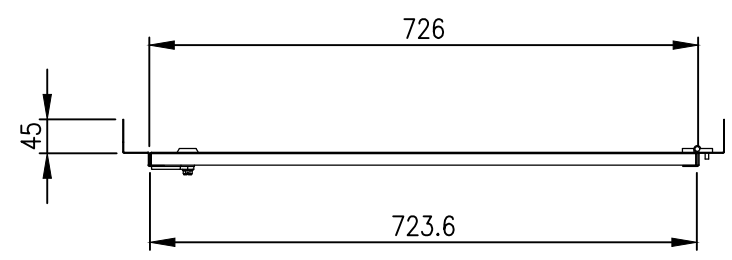
FRONT VIEW



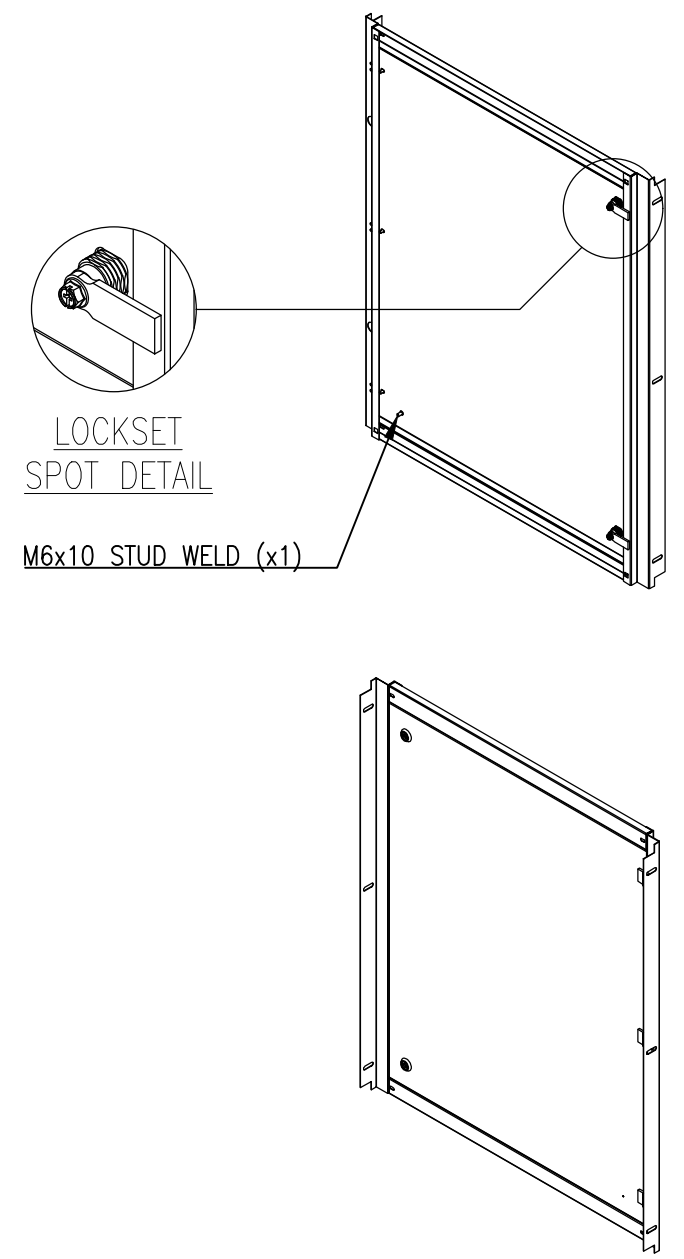
RIGHT SIDE VERTICAL FRAME



REAR VIEW



BOTTOM VIEW



LOCKSET SPOT DETAIL

M6x10 STUD WELD (x1)

**MATERIAL**

FRAME: 1.2mm GALVANISED STEEL  
DOOR PANEL: 1.2mm GALVANISED STEEL

**CLEARANCE/DISTANCE DIMENSIONS:**

- INNER DOOR TO OUTER DOOR: 68.3mm
- INNER DOOR TO MOUNTING PLATE:
- (ENCLOSURE WITH 300 DEPTH): 217.8mm
- (ENCLOSURE WITH 400 DEPTH): 317.8mm

© IP ENCLOSURES 2022.  
THIS DRAWING SHALL NOT BE COPIED OR REPRODUCED  
WITHOUT AUTHORISATION FROM IP ENCLOSURES.  
www.ipenclosures.com.au

Itemref	Quantity	Title/Name, designation, material, dimension etc	Article No./Reference
Designed by IP	Checked by IP	Approved by - date 05/07/22	Filename IP-PSID10080 Date 05/07/22 Scale 1:10
IP Enclosures		1000Hx800W STEEL INNER DOOR	
		IP-PSID10080	Edition 0 Sheet 1/1