



GENERAL CATALOGUE

Electrical Enclosures

2020

Protection in the toughest conditions™



Greenland Ice Sheet
National Centre for Atmospheric Science (NCAS) UK
Stainless Steel Electrical Enclosure with Thermal Control
Provided by IP Enclosures

World Class Electrical Enclosures

Introduction

IP Enclosures is a leading, high-quality Australian brand of electrical enclosures. We provide wall-mounted electrical enclosures and floor-standing electrical cabinets up to IP66 for low-voltage switchgear and controlgear assemblies. The full range can be provided in powder coated galvanised steel, aluminium or grade 316 stainless steel. Our enclosures conform to IEC62208 and IEC/EN/AS60529 with protection up to IP66.

A wide range of IP66 19" data racks and accessories are available to house sensitive data network equipment in harsh environments. A range of roadside and infrastructure field cabinets are available and we also provide custom electrical enclosures to suit specific project requirements.

Accessories including rain hoods, inner doors, locking solutions, LED lights and various mounting solutions are available to suit all sizes. High quality thermal management products including ventilation fans and filters, heaters, air conditioners and controllers can be provided separately or as an assembly.

Our electrical enclosures and accessories are manufactured to the highest standards using world-class international manufacturing facilities in Europe. We have provided thousands of electrical enclosures throughout Australia and have exported throughout Europe, UK, USA, UAE, New Zealand and Asia Pacific regions.

IP Enclosures are available throughout Australia via a network of distributors and wholesalers. We look forward to working with you to meet your electrical enclosure needs.

"IP Enclosures is an internationally registered trademark. Aim for high quality and specify IP Enclosures."

CONTENTS	Page
Wall Mounted Electrical Enclosures	
S1 & S2 Steel Powder Coated	2-7
SS1 & SS2 Stainless Steel	8-13
Sloping Roof Enclosures	
SSR1 Steel Powder Coated (Single Door)	14-17
SSSR-1 Stainless Steel	18-19
Accessories (Wall Mounted Enclosures)	
Transparent Doors	20-21
Inner Doors	22-23
Distribution Board Kits	24-25
Rain Hoods	26-27
Shelf Kits	28-29
Mounting Brackets & Stands	30-31
Miscellaneous Accessories	32-33
Hygienic Electrical Enclosures	
SSH Stainless Steel IP69	34-37
Floor Standing Electrical Cabinets	
MF1S Steel Powder Coated (Single Door)	38-39
MF1SS 316 Stainless Steel (Single Door)	40-41
MF1S & MF1SS Dimension Table	42-43
Accessories (Floor Standing Cabinets)	44-47
Wall Mounted IP66 19" Data Racks	
SDW Steel Powder Coated	48-49
ADW Marine Grade Aluminium	50-51
Floor Mounted IP66 19" Data Racks	
SD Steel Powder Coated	52-53
SSD 316 Stainless Steel	54-55
Accessories (19" Data Racks)	56-57
Plinth Mounted Infrastructure Field Cabinets	
FC Steel Powder Coated	58-59
FCA Marine Grade Aluminium	60-61
Accessories (Field Cabinets)	62-63
Isolation Cabinets	
ISO Steel Powder Coated	64-65
HMI Enclosures	
HMI Steel Powder Coated	66-67
Support Arm Systems	68-69
Terminal Boxes	
TB Steel Powder Coated	70-71
SSTB 316 Stainless Steel	72-73
Pushbutton Enclosures	74-75
Thermal Control	
Ventilation Fans & Filters	76-81
Vent Hoods & Shields	82-83
Heaters	84-85
Air Conditioners	86-87
Controllers	88
LED Enclosure Lighting	89
Locking Solutions	90-91
Vent & Drain Plugs, Glands & Gland Plates	92-93
Custom Enclosures	94-95
Technical Reference	
Colour Chart	96
Degree of Protection - IP Ratings	97

Mounted Electrical Enclosures

Steel | Powder Coated

S1

SINGLE DOOR | IP66



The IP Enclosures S1 range of powder coated galvanised steel single door enclosures are designed to house a variety of electrical switch and control equipment. They are suitable for internal and external electrical installations for industrial, infrastructure, commercial and communications applications. All IP Enclosures are built to precision to ensure consistent high quality standards.

Features & Specifications

S1

IP Enclosures S1 range of steel electrical enclosures are suitable for general industrial applications.

Protection: Complies with IP66 IK10, NEMA 4
(Independent accredited test laboratory)

Standard: IEC62208, IEC/EN/AS60529
(IEC/EN/AS61439 Compliant, Optional UL508A) **CE**

Material:

- Body: 1.2mm galvanised steel sheet (up to 700x500x250)
1.5mm galvanised steel sheet (800x600x200 and above)
- Gland Plate: 1.5mm galvanised steel sheet
- Door: 1.5mm galvanised steel sheet
- Device Mounting Plate: 1.5mm galvanised steel sheet
- Seal: Polyurethane. UL listed.

Body: The robust monoblock body is fabricated using galvanised steel sheet (1.2mm-1.5mm). Flat face sealing surfaces are provided to increase seal life. Pre-fitted blind nutserts are incorporated to accommodate mounts and accessory fasteners to eliminate drilling and retain IP rating. Integral device plate mounts and M6 earth studs are provided. A galvanised steel gland plate is incorporated into the bottom face. Cutting, pressing and full continuous seam welding using precision automated manufacturing equipment ensures accuracy and consistent high quality.

Single Door: The robust surface mounted door is fabricated using 1.5mm galvanised steel sheet and incorporates concealed removable hinges with captive pins. The door is designed for a 110° opening. Each door contains cable management rails, an M6 earth stud and a high quality machine-applied foamed in place (FIP) Polyurethane seal. Two internal cable management rails can be removed to provide additional space for equipment, duct and door mounted control components.

Seal: A high quality machine-applied full perimeter UL listed Polyurethane seal foamed in place (FIP) provides excellent sealing over a long life. Temperature resistance -40°C to 80°C (160°C short term loading).

Lock: Chrome 3mm double bit insert quarter turn lock with key. A full range of locking options are available upon request.

Device Mounting Plate: The device mounting plate is fabricated using 1.5mm galvanised steel sheet, pressed to provide additional strength and supplied pre-fitted into the enclosure as standard.

Gland Plate: Gland plates incorporate a seal and are provided with fasteners. The size and quantity vary according to enclosure size. The gland plates are incorporated into the bottom face of the enclosure body, located towards the rear adjacent to the device plate for ease of cable management.

Surface Treatment: UL approved epoxy polyester powder coated with a textured finish 80-120 micron average thickness. Standard colour: RAL7035 (Other colours available upon request).



Mounted Electrical Enclosures

S2

Steel | Powder Coated

DOUBLE DOOR | IP55



The IP Enclosures S2 range of powder coated galvanised steel double door enclosures are designed to house a variety of electrical switch and control equipment. They are suitable for internal and external electrical installations for industrial, infrastructure, commercial and communications applications. All IP Enclosures are built to precision to ensure consistent high quality standards.

Features & Specifications

IP Enclosures S2 range of steel electrical enclosures are suitable for general industrial applications.

Protection: Complies with IP55 IK10, NEMA 4
(Independent accredited test laboratory)

Standard: IEC62208, IEC/EN/AS60529
(IEC/EN/AS61439 Compliant, Optional UL508A) **CE**

Material:

- Body: 1.5mm galvanised steel sheet
- Gland Plate: 1.5mm galvanised steel sheet
- Door: 1.5mm galvanised steel sheet
- Device Mounting Plate: 1.5mm galvanised steel sheet
- Seal: Polyurethane. UL listed.

Body: The robust monoblock body is fabricated using 1.5mm galvanised steel sheet. Flat face sealing surfaces are provided to increase seal life. Pre-fitted blind nuts are incorporated to accommodate mounts and accessory fasteners to eliminate drilling and retain IP rating. Integral device plate mounts and M6 earth studs are provided. Gland plates are incorporated into the bottom face. Cutting, pressing and full continuous seam welding using precision automated manufacturing equipment ensures accuracy and consistent high quality.

Double Doors: The robust surface mounted doors are fabricated using 1.5mm galvanised steel sheet and incorporates concealed removable hinges with captive pins. The doors are designed to eliminate the central mullion to improve accessibility into the enclosure. The doors are designed for a 110° opening. Each door contains integral cable management rails, an M6 earth stud and a high quality machine-applied foamed in place (FIP) Polyurethane seal. Internal cable management rails can be removed to provide additional space for equipment, duct and door mounted control components.

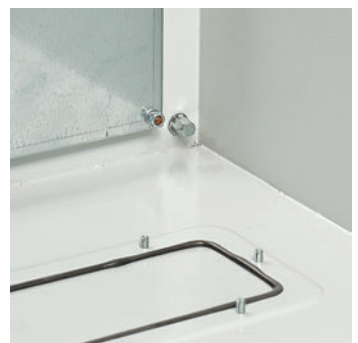
Seal: A high quality machine-applied full perimeter UL listed Polyurethane seal foamed in place (FIP) provides excellent sealing over a long life. Temperature resistance -40°C to 80°C (160°C short term loading).

Lock: 3 point locking system with key-lock swing handle. A full range of locking solutions are available upon request.

Device Mounting Plate: The device mounting plate is fabricated using 1.5mm galvanised steel sheet, pressed to provide additional strength and supplied pre-fitted into enclosure as standard.

Gland Plates: Gland plates incorporate seals and are provided with fasteners. The size and quantity vary according to enclosure size. The gland plates are incorporated into the bottom face of the enclosure body, located towards the rear adjacent to the device plate for ease of cable management.

Surface Treatment: UL approved epoxy polyester powder coated with a textured finish 80-120 micron average thickness. Standard colour: RAL7035 (Other colours available upon request).



Steel | Powder Coated

S1

SINGLE DOOR | IP66

Part Number	Enclosure Size	Device Plate	Locks	Accessories			Part Number Suffix
Standard	H x W x D (mm)	H x W (mm)	Qty	Inner Door	Rain Hood	Transparent Door	Optional Colours
IP-302015	300 x 200 x 150	250 x 130	1	IP-PSID3020	IP-PSRH2015	-	-T33 -BLK -OR -RED
IP-303015	300 x 300 x 150	250 x 230	1	IP-PSID3030	IP-PSRH3015	-	-T33 -BLK -OR -RED
IP-303020	300 x 300 x 200	250 x 230	1	IP-PSID3030	IP-PSRH3020	-	-T33 -BLK -OR -RED
IP-L304015	300 x 400 x 150	250 x 330	1	IP-PSID3040	IP-PSRH4015	-	-T33 -BLK -OR -RED
IP-L304020	300 x 400 x 200	250 x 330	1	IP-PSID3040	IP-PSRH4020	-	-T33 -BLK -OR -RED
IP-403015	400 x 300 x 150	350 x 230	1	IP-PSID4030	IP-PSRH3015	IP-4030WINDOOR	-T33 -BLK -OR -RED
IP-403020	400 x 300 x 200	350 x 230	1	IP-PSID4030	IP-PSRH3020	IP-4030WINDOOR	-T33 -BLK -OR -RED
IP-404020	400 x 400 x 200	350 x 330	1	IP-PSID4040	IP-PSRH4020	IP-4040WINDOOR	-T33 -BLK -OR -RED
IP-L406020	400 x 600 x 200	350 x 530	1	IP-PSID4060	IP-PSRH6020	IP-4060WINDOOR	-T33 -BLK -OR -RED
IP-L406030	400 x 600 x 300	350 x 530	1	IP-PSID4060	IP-PSRH6030	IP-4060WINDOOR	-T33 -BLK -OR -RED
IP-503015	500 x 300 x 150	450 x 230	1	IP-PSID5030	IP-PSRH3015	IP-5030WINDOOR	-T33 -BLK -OR -RED
IP-503020	500 x 300 x 200	450 x 230	1	IP-PSID5030	IP-PSRH3020	IP-5030WINDOOR	-T33 -BLK -OR -RED
IP-504020	500 x 400 x 200	450 x 330	1	IP-PSID5040	IP-PSRH4020	IP-5040WINDOOR	-T33 -BLK -OR -RED
IP-504025	500 x 400 x 250	450 x 330	1	IP-PSID5040	IP-PSRH4025	IP-5040WINDOOR	-T33 -BLK -OR -RED
IP-505020	500 x 500 x 200	450 x 430	1	IP-PSID5050	IP-PSRH5020	IP-5050WINDOOR	-T33 -BLK -OR -RED
IP-505025	500 x 500 x 250	450 x 430	1	IP-PSID5050	IP-PSRH5025	IP-5050WINDOOR	-T33 -BLK -OR -RED
IP-604020	600 x 400 x 200	550 x 330	2	IP-PSID6040	IP-PSRH4020	IP-6040WINDOOR	-T33 -BLK -OR -RED
IP-604025	600 x 400 x 250	550 x 330	2	IP-PSID6040	IP-PSRH4025	IP-6040WINDOOR	-T33 -BLK -OR -RED
IP-606020	600 x 600 x 200	550 x 530	2	IP-PSID6060	IP-PSRH6020	IP-6060WINDOOR	-T33 -BLK -OR -RED
IP-606030	600 x 600 x 300	550 x 530	2	IP-PSID6060	IP-PSRH6030	IP-6060WINDOOR	-T33 -BLK -OR -RED
IP-606040	600 x 600 x 400	550 x 530	2	IP-PSID6060	IP-PSRH6040	IP-6060WINDOOR	-T33 -BLK -OR -RED
IP-L608030	600 x 800 x 300	750 x 730	2	IP-PSID6080	IP-PSRH8030	IP-6080WINDOOR	-T33 -BLK -OR -RED
IP-705020	700 x 500 x 200	650 x 430	2	IP-PSID7050	IP-PSRH5020	IP-7050WINDOOR	-T33 -BLK -OR -RED
IP-705025	700 x 500 x 250	650 x 430	2	IP-PSID7050	IP-PSRH5025	IP-7050WINDOOR	-T33 -BLK -OR -RED
IP-804030	800 x 400 x 300	750 x 330	2	IP-PSID8040	IP-PSRH4030	IP-8040WINDOOR	-T33 -BLK -OR -RED
IP-806020	800 x 600 x 200	750 x 530	2	IP-PSID8060	IP-PSRH6020	IP-8060WINDOOR	-T33 -BLK -OR -RED
IP-806025	800 x 600 x 250	750 x 530	2	IP-PSID8060	IP-PSRH6025	IP-8060WINDOOR	-T33 -BLK -OR -RED
IP-806030	800 x 600 x 300	750 x 530	2	IP-PSID8060	IP-PSRH6030	IP-8060WINDOOR	-T33 -BLK -OR -RED
IP-808020	800 x 800 x 200	750 x 730	2	IP-PSID8080	IP-PSRH8020	IP-8080WINDOOR	-T33 -BLK -OR -RED
IP-808030	800 x 800 x 300	750 x 730	2	IP-PSID8080	IP-PSRH8030	IP-8080WINDOOR	-T33 -BLK -OR -RED
IP-808040	800 x 800 x 400	750 x 730	2	IP-PSID8080	IP-PSRH8040	IP-8080WINDOOR	-T33 -BLK -OR -RED
IP-1006025	1000 x 600 x 250	950 x 530	2	IP-PSID10060	IP-PSRH6025	IP-10060WINDOOR	-T33 -BLK -OR -RED
IP-1006030	1000 x 600 x 300	950 x 530	2	IP-PSID10060	IP-PSRH6030	IP-10060WINDOOR	-T33 -BLK -OR -RED
IP-1008030	1000 x 800 x 300	950 x 730	2	IP-PSID10080	IP-PSRH8030	IP-10080WINDOOR	-T33 -BLK -OR -RED
IP-1008040	1000 x 800 x 400	950 x 730	2	IP-PSID10080	IP-PSRH8040	IP-10080WINDOOR	-T33 -BLK -OR -RED
IP-1206030	1200 x 600 x 300	1150 x 530	2	IP-PSID12060	IP-PSRH6030	IP-12060WINDOOR	-T33 -BLK -OR -RED
IP-1208030	1200 x 800 x 300	1150 x 730	2	IP-PSID12080	IP-PSRH8030	IP-12080WINDOOR	-T33 -BLK -OR -RED
IP-1208040	1200 x 800 x 400	1150 x 730	2	IP-PSID12080	IP-PSRH8040	IP-12080WINDOOR	-T33 -BLK -OR -RED

DOUBLE DOOR | IP55



Part Number	Enclosure Size	Device Plate	Lock	Accessories			Part Number Suffix
Standard	H x W x D (mm)	H x W (mm)	Type	Inner Door	Rain Hood	Transparent Door	Optional Colours
IP-L4010030	400 x 1000 x 300	350 x 930	3-Point	IP-PSID40100	IP-PSRH10030	-	-T33 -BLK -OR -RED
IP-L4010040	400 x 1000 x 400	350 x 930	3-Point	IP-PSID40100	IP-PSRH10040	-	-T33 -BLK -OR -RED
IP-L6010030	600 x 1000 x 300	550 x 930	3-Point	IP-PSID60100	IP-PSRH10030	-	-T33 -BLK -OR -RED
IP-L6010040	600 x 1000 x 400	550 x 930	3-Point	IP-PSID60100	IP-PSRH10040	-	-T33 -BLK -OR -RED
IP-L4012030	400 x 1200 x 300	350 x 1130	3-Point	-	IP-PSRH12030	-	-T33 -BLK -OR -RED
IP-L4012040	400 x 1200 x 400	350 x 1130	3-Point	-	IP-PSRH12040	-	-T33 -BLK -OR -RED
IP-L6012030	600 x 1200 x 300	550 x 1130	3-Point	-	IP-PSRH12030	-	-T33 -BLK -OR -RED
IP-L6012040	600 x 1200 x 400	550 x 1130	3-Point	-	IP-PSRH12040	-	-T33 -BLK -OR -RED
IP-10010030	1000 x 1000 x 300	950 x 930	3-Point	IP-PSID100100	IP-PSRH10030	-	-T33 -BLK -OR -RED
IP-10010040	1000 x 1000 x 400	950 x 930	3-Point	IP-PSID100100	IP-PSRH10040	-	-T33 -BLK -OR -RED
IP-12010030	1200 x 1000 x 300	1150 x 930	3-Point	IP-PSID120100	IP-PSRH10030	-	-T33 -BLK -OR -RED
IP-12010040	1200 x 1000 x 400	1150 x 930	3-Point	IP-PSID120100	IP-PSRH10040	-	-T33 -BLK -OR -RED
IP-12012030	1200 x 1200 x 300	1150 x 1130	3-Point	IP-PSID120120	IP-PSRH12030	-	-T33 -BLK -OR -RED
IP-12012040	1200 x 1200 x 400	1150 x 1130	3-Point	IP-PSID120120	IP-PSRH12040	-	-T33 -BLK -OR -RED

Mounted Electrical Enclosures

SS1

Stainless Steel Grade 316/316L (Optional 304)

SINGLE DOOR | IP66



The IP Enclosures SS1 range of stainless steel single door enclosures are designed to house a variety of electrical switch and control equipment in extreme environments. They are suitable for internal and external electrical installations for industrial, infrastructure, commercial, communications, defence, marine, food and beverage applications. All IP Enclosures are built to precision to ensure consistent high quality standards.

Features & Specifications

SS1

IP Enclosures SS1 range of stainless steel electrical enclosures are suitable for general industrial applications.

Protection: Complies with IP66 IK10, NEMA 4x
(Independent accredited test laboratory)

Standard: IEC62208, IEC/EN/AS60529
(IEC/EN/AS61439 Compliant, Optional UL508A) **CE**

Material:

- Body: 1.5mm Grade 316/316L Stainless Steel (Optional 304)
- Door: 1.5mm Grade 316/316L Stainless Steel (Optional 304)
- Device Mounting Plate: 1.5mm Galvanised Steel Sheet
- Seal: Polyurethane. UL listed.

Surface Finish: 0.4 micron Ra surface brushed finish

Body: The robust monoblock body is fabricated using 1.5mm Grade 316/316L Stainless Steel (Grade 304 is also available). Flat face sealing surfaces are provided to increase seal life. Pre-fitted blind nutserts are incorporated to accommodate mounts and accessory fasteners to eliminate drilling and retain IP rating. Integral device plate mounts and M6 earth studs are provided. Cutting, pressing and full continuous seam welding using precision automated manufacturing equipment ensures accuracy and consistent high quality.

Single Door: The robust surface mounted door is fabricated using 1.5mm Grade 316/316L Stainless Steel and incorporates concealed removable hinges with captive pins (Grade 304 is also available). The door is designed for a 110° opening. Each door contains cable management rails, an M6 earth stud and a high quality machine-applied foamed in place (FIP) Polyurethane seal. Two internal cable management rails can be removed to provide additional space for equipment, duct and door mounted control components.

Seal: A high quality machine-applied full perimeter UL listed Polyurethane seal foamed in place (FIP) provides excellent sealing over a long life. Temperature resistance -40°C to 80°C (160°C short term loading).

Lock: Grade 304 Stainless Steel 8mm square drive quarter turn lock with key. (316 Stainless Steel optional). A full range of locking solutions are available upon request.

Device Mounting Plate: The device mounting plate is fabricated using 1.5mm galvanised steel sheet, pressed to provide additional strength and supplied pre-fitted into the enclosure as standard.

Incorporates many advanced features as standard

- Fabricated using grade 316 stainless steel (Optional 304)
- Incorporates flat sealing face to improve seal life
- Includes door cable rails
- Includes nutserts for mounting brackets and accessories to retain IP rating
- Includes mounting points for accessories including inner door escutcheons, rain hoods etc.



Mounted Electrical Enclosures

SS2

Stainless Steel Grade 316/316L (Optional 304)

DOUBLE DOOR | IP55



The IP Enclosures SS2 range of stainless steel double door enclosures are designed to house a variety of electrical switch and control equipment in extreme environments. They are suitable for internal and external electrical installations for industrial, infrastructure, commercial, communications, defence, marine, food and beverage applications. All IP Enclosures are built to precision to ensure consistent high quality standards.

Features & Specifications

SS2

IP Enclosures SS2 range of grade stainless steel electrical enclosures are suitable for general industrial applications.

Protection: Complies with IP55 IK10, NEMA 4x
(Independent accredited test laboratory)

Standard: IEC62208, IEC/EN/AS60529
(IEC/EN/AS61439 Compliant, Optional UL508A) **CE**

Material:

- Body: 1.5mm Grade 316/316L Stainless Steel (Optional 304)
- Door: 1.5mm Grade 316/316L Stainless Steel (Optional 304)
- Device Mounting Plate: 1.5mm Galvanised Steel Sheet
- Seal: Polyurethane. UL listed.

Surface Finish: 0.4 micron Ra surface brushed finish

Body: The robust monoblock body is fabricated using 1.5mm Grade 316/316L Stainless Steel (Grade 304 is also available). Flat face sealing surfaces are provided to increase seal life. Pre-fitted blind nutserts are incorporated to accommodate mounts and accessory fasteners to eliminate drilling and retain IP rating. Integral device plate mounts and M6 earth studs are provided. Cutting, pressing and full continuous seam welding using precision automated manufacturing equipment ensures accuracy and consistent high quality.

Double Doors: The robust surface mounted doors are fabricated using 1.5mm Grade 316/316L Stainless Steel and incorporates concealed removable hinges with captive pins (Grade 304 is also available). The doors are designed to eliminate the central mullion to improve accessibility into the enclosure. The doors are designed for a 110° opening. Each door contains cable management rails, an M6 earth stud and a high quality machine-applied foamed in place (FIP) Polyurethane seal. Internal cable management rails can be removed to provide additional space for equipment, duct and door mounted control components.

Seal: A high quality machine-applied full perimeter UL listed Polyurethane seal foamed in place (FIP) provides excellent sealing over a long life. Temperature resistance -40°C to 80°C (160°C short term loading).

Lock: 3 point locking system with key-lock swing handle. A full range of locking solutions are available upon request.

Device Mounting Plate: The device mounting plate is fabricated using 1.5mm galvanised steel sheet, pressed to provide additional strength and supplied pre-fitted into the enclosure as standard.

Incorporates many advanced features as standard

- Fabricated using grade 316 stainless steel (Optional 304)
- Incorporates flat sealing face to improve seal life
- Includes door cable rails
- Includes nutserts for mounting brackets and accessories to retain IP rating
- Includes mounting points for accessories including inner door escutcheons, rain hoods etc.



Stainless Steel 316/316L (Optional 304)

SS1

SINGLE DOOR | IP66

Part Number	Optional	Enclosure Size	Device Plate	Locks	Accessories		
Grade 316	Grade 304	H x W x D (mm)	H x W (mm)	Qty	Inner Door	Rain Hood	Transparent Door
IP-SS302015	IP-304-302015	300 x 200 x 150	250 x 130	1	IP-SSID3020	IP-SSRH2015	-
IP-SS303015	IP-304-303015	300 x 300 x 150	250 x 230	1	IP-SSID3030	IP-SSRH3015	-
IP-SS303020	IP-304-303020	300 x 300 x 200	250 x 230	1	IP-SSID3030	IP-SSRH3020	-
IP-SSL304015	IP-304-L304015	300 x 400 x 150	250 x 330	1	IP-SSID3040	IP-SSRH4015	-
IP-SSL304020	IP-304-L304020	300 x 400 x 200	250 x 330	1	IP-SSID3040	IP-SSRH4020	-
IP-SS403015	IP-304-403015	400 x 300 x 150	350 x 230	1	IP-SSID4030	IP-SSRH3015	IP-SS4030WINDOOR
IP-SS403020	IP-304-403020	400 x 300 x 200	350 x 230	1	IP-SSID4030	IP-SSRH3020	IP-SS4030WINDOOR
IP-SS404020	IP-304-404020	400 x 400 x 200	350 x 330	1	IP-SSID4040	IP-SSRH4020	IP-SS4040WINDOOR
IP-SSL406020	IP-304-L406020	400 x 600 x 200	350 x 530	1	IP-SSID4060	IP-SSRH6020	IP-SS4060WINDOOR
IP-SSL406030	IP-304-L406030	400 x 600 x 300	350 x 530	1	IP-SSID4060	IP-SSRH6030	IP-SS4060WINDOOR
IP-SS503015	IP-304-503015	500 x 300 x 150	450 x 230	1	IP-SSID5030	IP-SSRH3015	IP-SS5030WINDOOR
IP-SS503020	IP-304-503020	500 x 300 x 200	450 x 230	1	IP-SSID5030	IP-SSRH3020	IP-SS5030WINDOOR
IP-SS504020	IP-304-504020	500 x 400 x 200	450 x 330	1	IP-SSID5040	IP-SSRH4020	IP-SS5040WINDOOR
IP-SS504025	IP-304-504025	500 x 400 x 250	450 x 330	1	IP-SSID5040	IP-SSRH4025	IP-SS5040WINDOOR
IP-SS505020	IP-304-505020	500 x 500 x 200	450 x 430	1	IP-SSID5050	IP-SSRH5020	IP-SS5050WINDOOR
IP-SS505025	IP-304-505025	500 x 500 x 250	450 x 430	1	IP-SSID5050	IP-SSRH5025	IP-SS5050WINDOOR
IP-SS604020	IP-304-604020	600 x 400 x 200	550 x 330	2	IP-SSID6040	IP-SSRH4020	IP-SS6040WINDOOR
IP-SS604025	IP-304-604025	600 x 400 x 250	550 x 330	2	IP-SSID6040	IP-SSRH4025	IP-SS6040WINDOOR
IP-SS606020	IP-304-606020	600 x 600 x 200	550 x 530	2	IP-SSID6060	IP-SSRH6020	IP-SS6060WINDOOR
IP-SS606030	IP-304-606030	600 x 600 x 300	550 x 530	2	IP-SSID6060	IP-SSRH6030	IP-SS6060WINDOOR
IP-SS606040	IP-304-606040	600 x 600 x 400	550 x 530	2	IP-SSID6060	IP-SSRH6040	IP-SS6060WINDOOR
IP-SSL608030	IP-304-L608030	600 x 800 x 300	750 x 730	2	IP-SSID6080	IP-SSRH8030	IP-SS6080WINDOOR
IP-SS705020	IP-304-705020	700 x 500 x 200	650 x 430	2	IP-SSID7050	IP-SSRH5020	IP-SS7050WINDOOR
IP-SS705025	IP-304-705025	700 x 500 x 250	650 x 430	2	IP-SSID7050	IP-SSRH5025	IP-SS7050WINDOOR
IP-SS804030	IP-304-804030	800 x 400 x 300	750 x 330	2	IP-SSID8040	IP-SSRH4030	IP-SS8040WINDOOR
IP-SS806020	IP-304-806020	800 x 600 x 200	750 x 530	2	IP-SSID8060	IP-SSRH6020	IP-SS8060WINDOOR
IP-SS806025	IP-304-806025	800 x 600 x 250	750 x 530	2	IP-SSID8060	IP-SSRH6025	IP-SS8060WINDOOR
IP-SS806030	IP-304-806030	800 x 600 x 300	750 x 530	2	IP-SSID8060	IP-SSRH6030	IP-SS8060WINDOOR
IP-SS808020	IP-304-808020	800 x 800 x 200	750 x 730	2	IP-SSID8080	IP-SSRH8020	IP-SS8080WINDOOR
IP-SS808030	IP-304-808030	800 x 800 x 300	750 x 730	2	IP-SSID8080	IP-SSRH8030	IP-SS8080WINDOOR
IP-SS808040	IP-304-808040	800 x 800 x 400	750 x 730	2	IP-SSID8080	IP-SSRH8040	IP-SS8080WINDOOR
IP-SS1006025	IP-304-1006025	1000 x 600 x 250	950 x 530	2	IP-SSID10060	IP-SSRH6025	IP-SS10060WINDOOR
IP-SS1006030	IP-304-1006030	1000 x 600 x 300	950 x 530	2	IP-SSID10060	IP-SSRH6030	IP-SS10060WINDOOR
IP-SS1008030	IP-304-1008030	1000 x 800 x 300	950 x 730	2	IP-SSID10080	IP-SSRH8030	IP-SS10080WINDOOR
IP-SS1008040	IP-304-1008040	1000 x 800 x 400	950 x 730	2	IP-SSID10080	IP-SSRH8040	IP-SS10080WINDOOR
IP-SS1206030	IP-304-1206030	1200 x 600 x 300	1150 x 530	2	IP-SSID12060	IP-SSRH6030	IP-SS12060WINDOOR
IP-SS1208030	IP-304-1208030	1200 x 800 x 300	1150 x 730	2	IP-SSID12080	IP-SSRH8030	IP-SS12080WINDOOR
IP-SS1208040	IP-304-1208040	1200 x 800 x 400	1150 x 730	2	IP-SSID12080	IP-SSRH8040	IP-SS12080WINDOOR

Stainless Steel 316/316L (Optional 304)

SS2

DOUBLE DOOR | IP55

Part Number	Optional	Enclosure Size	Device Plate	Lock	Accessories		
Grade 316	Grade 304	H x W x D (mm)	H x W (mm)	Type	Inner Door	Rain Hood	Transparent Door
IP-SSL4010030	IP-304-L4010030	400 x 1000 x 300	350 x 930	3-Point	IP-SSID40100	IP-SSRH10030	-
IP-SSL4010040	IP-304-L4010040	400 x 1000 x 400	350 x 930	3-Point	IP-SSID40100	IP-SSRH10040	-
IP-SSL6010030	IP-304-L6010030	600 x 1000 x 300	550 x 930	3-Point	IP-SSID60100	IP-SSRH10030	-
IP-SSL6010040	IP-304-L6010040	600 x 1000 x 400	550 x 930	3-Point	IP-SSID60100	IP-SSRH10040	-
IP-SSL4012030	IP-304-L4012030	400 x 1200 x 300	350 x 1130	3-Point	-	IP-SSRH12030	-
IP-SSL4012040	IP-304-L4012040	400 x 1200 x 400	350 x 1130	3-Point	-	IP-SSRH12040	-
IP-SSL6012030	IP-304-L6012030	600 x 1200 x 300	550 x 1130	3-Point	-	IP-SSRH12030	-
IP-SSL6012040	IP-304-L6012040	600 x 1200 x 400	550 x 1130	3-Point	-	IP-SSRH12040	-
IP-SS10010030	IP-304-10010030	1000 x 1000 x 300	950 x 930	3-Point	IP-SSID100100	IP-SSRH10030	-
IP-SS10010040	IP-304-10010040	1000 x 1000 x 400	950 x 930	3-Point	IP-SSID100100	IP-SSRH10040	-
IP-SS12010030	IP-304-12010030	1200 x 1000 x 300	1150 x 930	3-Point	IP-SSID120100	IP-SSRH10030	-
IP-SS12010040	IP-304-12010040	1200 x 1000 x 400	1150 x 930	3-Point	IP-SSID120100	IP-SSRH10040	-
IP-SS12012030	IP-304-12012030	1200 x 1200 x 300	1150 x 1130	3-Point	IP-SSID120120	IP-SSRH12030	-
IP-SS12012040	IP-304-12012040	1200 x 1200 x 400	1150 x 1130	3-Point	IP-SSID120120	IP-SSRH12040	-

Mounted Electrical Enclosures

Steel | Powder Coated

SSR1

SLOPING ROOF | SINGLE DOOR | IP66



The IP Enclosures SSR1 range of powder coated galvanised steel sloping roof enclosures are designed to house a variety of electrical switch and control equipment. The sloping roof assists to prevent build up of dust, debris and waste material.

Features & Specifications

SSR1

IP Enclosures SSR1 range of steel sloping roof electrical enclosures are designed to house a variety of electrical switch and control equipment while preventing build up of dust, debris and waste material.

Protection: Complies with IP66 IK10, NEMA 4

Standard: IEC62208, IEC/EN/AS60529 

Material:

- Body: 1.2 Galvanised Steel Sheet (Heavy Duty Option: 2mm)
- Door: 1.2 Galvanised Steel Sheet (Heavy Duty Option: 2mm)
- Device Mounting Plate: 1.5mm Galvanised Steel Sheet
- Seal: Polyurethane. UL listed.

Body: The robust monoblock body with sloping roof is fabricated using 1.2mm galvanised steel sheet (2mm for Heavy Duty Option). Flat face sealing surfaces are provided to increase seal life. Pre-fitted blind nutserts are incorporated to accommodate mounting. The roof consists of a sloped roof design that protrudes past the seal, flush with the door face. (Heavy Duty Option protrudes past pushbuttons).

Single Door: The robust surface mounted door is fabricated using 1.2mm galvanised steel sheet (2mm for optional Heavy Duty) and incorporates concealed removable hinges with captive pins. The door is designed for a 110° opening. Each door contains cable management rails, an M6 earth stud and a high quality machine-applied foamed in place (FIP) Polyurethane seal.

Seal: UL listed Polyurethane seal (FIP). Temperature resistance: -40°C to 80°C

Lock: Chrome 3mm double bit insert quarter turn lock with key.

Device Mounting Plate: 1.5mm galvanised steel sheet.

Surface Treatment: Powder coated 80-120 micron average thickness textured finish (Heavy Duty Option is provided with a smooth finish).



Part Number	Optional	Enclosure Size	Device Plate	Locks	Accessories		Part Number Suffix
Standard	Heavy Duty	H x W x D (mm)	H x W (mm)	Qty	Inner Door	Transparent Door	Optional Colours
IP-SSR302015	IP-SSR302015-HD	300 x 200 x 150	250 x 130	1	IP-PSID3020	-	-T33 -BLK -OR -RED
IP-SSR303015	IP-SSR303015-HD	300 x 300 x 150	250 x 230	1	IP-PSID3030	-	-T33 -BLK -OR -RED
IP-SSR403020	IP-SSR403020-HD	400 x 300 x 200	350 x 230	1	IP-PSID4030	IP-4030WINDOOR	-T33 -BLK -OR -RED
IP-SSR404020	IP-SSR404020-HD	400 x 400 x 200	350 x 330	1	IP-PSID4040	IP-4040WINDOOR	-T33 -BLK -OR -RED
IP-SSR504020	IP-SSR504020-HD	500 x 400 x 200	450 x 330	1	IP-PSID5040	IP-5040WINDOOR	-T33 -BLK -OR -RED
IP-SSR504025	IP-SSR504025-HD	500 x 400 x 250	450 x 330	1	IP-PSID5040	IP-5040WINDOOR	-T33 -BLK -OR -RED
IP-SSR505025	IP-SSR505025-HD	500 x 500 x 250	450 x 430	1	IP-PSID5050	IP-5050WINDOOR	-T33 -BLK -OR -RED
IP-SSR604025	IP-SSR604025-HD	600 x 400 x 250	550 x 330	2	IP-PSID6040	IP-6040WINDOOR	-T33 -BLK -OR -RED
IP-SSR606030	IP-SSR606030-HD	600 x 600 x 300	550 x 530	2	IP-PSID6060	IP-6060WINDOOR	-T33 -BLK -OR -RED
IP-SSR806030	IP-SSR806030-HD	800 x 600 x 300	750 x 530	2	IP-PSID8060	IP-8060WINDOOR	-T33 -BLK -OR -RED
IP-SSR808030	IP-SSR808030-HD	800 x 800 x 300	750 x 730	2	IP-PSID8080	IP-8080WINDOOR	-T33 -BLK -OR -RED
IP-SSR1007040	IP-SSR1007040-HD	1000 x 700 x 400	950 x 630	2	-	-	-T33 -BLK -OR -RED
IP-SSR1008030	IP-SSR1008030-HD	1000 x 800 x 300	950 x 730	2	IP-PSID10080	IP-10080WINDOOR	-T33 -BLK -OR -RED

Mounted Electrical Enclosures

SSR1-SUN

Steel | Powder Coated | Sun Shields

SLOPING ROOF | SINGLE DOOR | IP66 | with Sun Shields Fitted



The IP Enclosures SSR-SUN range of powder coated galvanised steel sloping roof enclosures with sun shields are designed to assist in controlling internal temperatures of enclosures installed in extreme environments exposed to direct sunlight. The sloping roof assists to prevent build up of dust, debris and waste material.

Features & Specifications

SSR1-SUN

IP Enclosures SSR1-SUN range of steel sloping roof electrical enclosures with sun shields are designed to house a variety of electrical switch and control equipment while preventing build up of dust, debris and waste material. Sun shields (solar shields) are fitted to external surfaces to assist in controlling the internal temperature of the electrical enclosure when exposed to extreme heat from sunlight.

Protection: Complies with IP66 IK10, NEMA 4

Standard: IEC62208, IEC/EN/AS60529 

Material:

- Body & Sun Shields: 1.2 to 2.0mm galvanised steel sheet
- Door: 1.2 to 2.0mm galvanised steel sheet
- Device Mounting Plate: 1.5mm galvanised steel sheet
- Seal: Polyurethane. UL listed.

Body & Sun Shields: The robust monoblock body with sloping roof is fabricated using 1.2 to 2.0 galvanised steel sheet. Flat face sealing surfaces are provided to increase seal life. Pre-fitted blind nuts are incorporated to accommodate mounting. The roof consists of a sloped roof design that protrudes past the seal. Sun shields are provided with spacers to offset the surface of the shield from the surface of the enclosure.

Single Door: The robust surface mounted door is fabricated using 1.2 to 2.0mm galvanised steel sheet and incorporates concealed removable hinges with captive pins. The door is designed for a 110° opening. Each door contains cable management rails, an M6 earth stud and a high quality machine-applied foamed in place (FIP) Polyurethane seal.

Seal: UL listed Polyurethane seal (FIP). Temperature resistance: -40°C to 80°C

Lock: Chrome 3mm double bit insert quarter turn lock with key.

Device Mounting Plate: 1.5mm galvanised steel sheet.



Part Number	Enclosure Size	Device Plate	Locks	Accessories		Part Number Suffix
Standard	H x W x D (mm)	H x W (mm)	Qty	Inner Door	Transparent Door	Optional Colours
IP-SSR302015SUN	300 x 200 x 150	250 x 130	1	IP-PSID3020	-	-T33 -BLK -OR -RED
IP-SSR303015SUN	300 x 300 x 150	250 x 230	1	IP-PSID3030	-	-T33 -BLK -OR -RED
IP-SSR403020SUN	400 x 300 x 200	350 x 230	1	IP-PSID4030	IP-4030WINDOOR	-T33 -BLK -OR -RED
IP-SSR404020SUN	400 x 400 x 200	350 x 330	1	IP-PSID4040	IP-4040WINDOOR	-T33 -BLK -OR -RED
IP-SSR504020SUN	500 x 400 x 200	450 x 330	1	IP-PSID5040	IP-5040WINDOOR	-T33 -BLK -OR -RED
IP-SSR504025SUN	500 x 400 x 250	450 x 330	1	IP-PSID5040	IP-5040WINDOOR	-T33 -BLK -OR -RED
IP-SSR505025SUN	500 x 500 x 250	450 x 430	1	IP-PSID5050	IP-5050WINDOOR	-T33 -BLK -OR -RED
IP-SSR604025SUN	600 x 400 x 250	550 x 330	2	IP-PSID6040	IP-6040WINDOOR	-T33 -BLK -OR -RED
IP-SSR606030SUN	600 x 600 x 300	550 x 530	2	IP-PSID6060	IP-6060WINDOOR	-T33 -BLK -OR -RED
IP-SSR806030SUN	800 x 600 x 300	750 x 530	2	IP-PSID8060	IP-8060WINDOOR	-T33 -BLK -OR -RED
IP-SSR808030SUN	800 x 800 x 300	750 x 730	2	IP-PSID8080	IP-8080WINDOOR	-T33 -BLK -OR -RED
IP-SSR1007040SUN	1000 x 700 x 400	950 x 630	2	-	-	-T33 -BLK -OR -RED
IP-SSR1008030SUN	1000 x 800 x 300	950 x 730	2	IP-PSID10080	IP-10080WINDOOR	-T33 -BLK -OR -RED

Mounted Electrical Enclosures

SSSR1

Stainless Steel Grade 316/316L

SLOPING ROOF | SINGLE DOOR | IP66



The IP Enclosures SSSR range of grade 316/316L stainless steel sloping roof enclosures are designed to house a variety of electrical switch and control equipment in extreme environments. The sloping roof assists to prevent build up of dust, debris and waste material.

Features & Specifications

SSSR1

IP Enclosures SSSR range of grade 316/316L stainless steel sloping roof electrical enclosures are designed to house a variety of electrical switch and control equipment while preventing build up of dust, debris and waste material.

Protection: Complies with IP66 IK10, NEMA 4x

Standard: IEC62208, IEC/EN/AS60529 

Material:

- Body: 1.5mm Grade 316/316L Stainless Steel
- Door: 1.5mm Grade 316/316L Stainless Steel
- Device Mounting Plate: 1.5mm Galvanised Steel Sheet
- Seal: Polyurethane. UL listed.

Surface Finish: 0.4 micron Ra surface brushed finish

Body: The robust monoblock body with sloping roof is fabricated using 1.5mm Grade 316/316L Stainless Steel. Flat face sealing surfaces are provided to increase seal life. Pre-fitted blind nuts are incorporated to accommodate mounting and accessories. The roof consists of a sloped roof design that protrudes past the seal, flush with the front of the door face.

Door: The robust surface mounted door is fabricated using 1.5mm Grade 316/316L Stainless Steel and incorporates concealed removable hinges with captive pins. The door is designed for a 110° opening. Each door contains cable management rails, an M6 earth stud and a high quality machine-applied foamed in place (FIP) Polyurethane seal.

Seal: A high quality machine-applied full perimeter UL listed Polyurethane seal foamed in place (FIP) provides excellent sealing over a long life. Temperature resistance -40°C to 80°C (160°C short term loading).

Lock: 304ss 8mm square drive quarter turn lock with key. (316ss optional).

Device Mounting Plate: Fabricated using 1.5mm galvanised steel sheet.

Part Number	Enclosure Size	Device Plate	Locks	Accessories	
Standard	H x W x D (mm)	H x W (mm)	Qty	Inner Door	Transparent Door
IP-SSSR302015	300 x 200 x 150	250 x 130	1	IP-SSID3020	-
IP-SSSR303015	300 x 300 x 150	250 x 230	1	IP-SSID3030	-
IP-SSSR403020	400 x 300 x 200	350 x 230	1	IP-SSID4030	IP-SS4030WINDOOR
IP-SSSR404020	400 x 400 x 200	350 x 330	1	IP-SSID4040	IP-SS4040WINDOOR
IP-SSSR504020	500 x 400 x 200	450 x 330	1	IP-SSID5040	IP-SS5040WINDOOR
IP-SSSR504025	500 x 400 x 250	450 x 330	1	IP-SSID5040	IP-SS5040WINDOOR
IP-SSSR505025	500 x 500 x 250	450 x 430	1	IP-SSID5050	IP-SS5050WINDOOR
IP-SSSR604025	600 x 400 x 250	550 x 330	2	IP-SSID6040	IP-SS6040WINDOOR
IP-SSSR606030	600 x 600 x 300	550 x 530	2	IP-SSID6060	IP-SS6060WINDOOR
IP-SSSR806030	800 x 600 x 300	750 x 530	2	IP-SSID8060	IP-SS8060WINDOOR
IP-SSSR808030	800 x 800 x 300	750 x 730	2	IP-SSID8080	IP-SS8080WINDOOR
IP-SSSR1007040	1000 x 700 x 400	950 x 630	2	-	-
IP-SSSR1008030	1000 x 800 x 300	950 x 730	2	IP-SSID10080	IP-SS10080WINDOOR



Transparent Door | Wall Mounted

GLAZED | IP66



Transparent Doors can be easily fitted to our range of electrical enclosures. Transparent Doors are provided as a standard accessory. Simply remove the standard door and replace with a transparent door.

WINDOOR

IP Enclosures provide a range of transparent glazed doors that can be easily fitted to our range of electrical enclosures. Transparent doors are provided as a standard accessory. Simply remove the existing door and replace with a transparent door.

Features and Specifications

Protection: Complies with IP66

Standard: IEC/EN/AS60529

STEEL RANGE

Material:

- Enclosure Door: 1.5mm galvanised steel sheet
- Enclosure Seal: Polyurethane
- Windows: 4mm transparent tempered glass

Door: Fabricated from 1.5mm galvanised steel sheet incorporating concealed removable hinges with captive pins. Provided with recessed windows manufactured from 4mm transparent tempered glass with seal. Powder coated 80-120 micron.

Seal: Machine applied Polyurethane foamed in place (FIP).

Lock: Chrome 3mm double bit quarter turn lock.

STAINLESS STEEL RANGE

Material:

- Enclosure Door: 1.5mm Grade 316/316L Stainless Steel
- Enclosure Seal: Polyurethane
- Windows: 4mm transparent tempered glass

Door: Fabricated from 1.5mm Grade 316/316L Stainless Steel incorporating concealed removable hinges with captive pins. Provided with recessed windows manufactured from 4mm transparent tempered glass with seal.

Seal: Machine applied Polyurethane foamed in place (FIP).

Lock: 304ss 8mm square drive quarter turn lock. (316ss lock optional)



STEEL



Size	Part Number	Part Number Suffix
H x W (mm)	Transparent Door	Optional Colours
400 x 400	IP-4040WINDOOR	-T33 -BLK -OR -RED
500 x 300	IP-5030WINDOOR	-T33 -BLK -OR -RED
500 x 400	IP-5040WINDOOR	-T33 -BLK -OR -RED
500 x 500	IP-5050WINDOOR	-T33 -BLK -OR -RED
600 x 400	IP-6040WINDOOR	-T33 -BLK -OR -RED
600 x 600	IP-6060WINDOOR	-T33 -BLK -OR -RED
700 x 500	IP-7050WINDOOR	-T33 -BLK -OR -RED
800 x 400	IP-8040WINDOOR	-T33 -BLK -OR -RED
800 x 600	IP-8060WINDOOR	-T33 -BLK -OR -RED
800 x 800	IP-8080WINDOOR	-T33 -BLK -OR -RED
1000 x 600	IP-10060WINDOOR	-T33 -BLK -OR -RED
1000 x 800	IP-10080WINDOOR	-T33 -BLK -OR -RED
1200 x 600	IP-12060WINDOOR	-T33 -BLK -OR -RED
1200 x 800	IP-12080WINDOOR	-T33 -BLK -OR -RED

STAINLESS STEEL

Size	Part Number
H x W (mm)	Transparent Door
400 x 400	IP-SS4040WINDOOR
500 x 300	IP-SS5030WINDOOR
500 x 400	IP-SS5040WINDOOR
500 x 500	IP-SS5050WINDOOR
600 x 400	IP-SS6040WINDOOR
600 x 600	IP-SS6060WINDOOR
700 x 500	IP-SS7050WINDOOR
800 x 400	IP-SS8040WINDOOR
800 x 600	IP-SS8060WINDOOR
800 x 800	IP-SS8080WINDOOR
1000 x 600	IP-SS10060WINDOOR
1000 x 800	IP-SS10080WINDOOR
1200 x 600	IP-SS12060WINDOOR
1200 x 800	IP-SS12080WINDOOR

Inner Door Escutcheons | Wall Mounted



IP Enclosures inner door escutcheons are designed and manufactured to easily fit into any IP Enclosures wall mounted electrical enclosure without drilling. Inner doors are tool lockable.

Inner door escutcheons enable operators to access control equipment while maintaining separation of hazardous voltage equipment. Inner door kits can be fitted to all IP Enclosures wall mounted electrical enclosures without drilling.

STEEL RANGE

Material: 1.2-1.5mm galvanised steel sheet

Lock: Chrome 3mm double bit insert quarter turn lock.

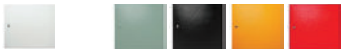
Surface Treatment: UL approved epoxy polyester powder coated with a textured finish. 80-120 micron average thickness. Standard colour: RAL7035. Other colour options are available. Refer to table.

STAINLESS STEEL RANGE

Material: 1.2-1.5mm Grade 316/316L Stainless Steel.

Lock: 8mm square drive quarter turn lock.

STEEL



Size	Accessories	Part Number Suffix
H x W (mm)	Inner Door	Optional Colours
300 x 200	IP-PSID3020	-T33 -BLK -OR -RED
300 x 300	IP-PSID3030	-T33 -BLK -OR -RED
300 x 400	IP-PSID3040	-T33 -BLK -OR -RED
400 x 300	IP-PSID4030	-T33 -BLK -OR -RED
400 x 400	IP-PSID4040	-T33 -BLK -OR -RED
400 x 600	IP-PSID4060	-T33 -BLK -OR -RED
500 x 300	IP-PSID5030	-T33 -BLK -OR -RED
500 x 400	IP-PSID5040	-T33 -BLK -OR -RED
500 x 500	IP-PSID5050	-T33 -BLK -OR -RED
600 x 400	IP-PSID6040	-T33 -BLK -OR -RED
600 x 600	IP-PSID6060	-T33 -BLK -OR -RED
600 x 800	IP-PSID6080	-T33 -BLK -OR -RED
700 x 500	IP-PSID7050	-T33 -BLK -OR -RED
800 x 400	IP-PSID8040	-T33 -BLK -OR -RED
800 x 600	IP-PSID8060	-T33 -BLK -OR -RED
800 x 800	IP-PSID8080	-T33 -BLK -OR -RED
1000 x 600	IP-PSID10060	-T33 -BLK -OR -RED
1000 x 800	IP-PSID10080	-T33 -BLK -OR -RED
1200 x 600	IP-PSID12060	-T33 -BLK -OR -RED
1200 x 800	IP-PSID12080	-T33 -BLK -OR -RED
400 x 1000	IP-PSID40100	-T33 -BLK -OR -RED
600 x 1000	IP-PSID60100	-T33 -BLK -OR -RED
1000 x 1000	IP-PSID100100	-T33 -BLK -OR -RED
1200 x 1000	IP-PSID120100	-T33 -BLK -OR -RED
1200 x 1200	IP-PSID120120	-T33 -BLK -OR -RED

STAINLESS STEEL

Size	Accessories
H x W (mm)	Inner Door
300 x 200	IP-SSID3020
300 x 300	IP-SSID3030
300 x 400	IP-SSID3040
400 x 300	IP-SSID4030
400 x 400	IP-SSID4040
400 x 600	IP-SSID4060
500 x 300	IP-SSID5030
500 x 400	IP-SSID5040
500 x 500	IP-SSID5050
600 x 400	IP-SSID6040
600 x 600	IP-SSID6060
600 x 800	IP-SSID6080
700 x 500	IP-SSID7050
800 x 400	IP-SSID8040
800 x 600	IP-SSID8060
800 x 800	IP-SSID8080
1000 x 600	IP-SSID10060
1000 x 800	IP-SSID10080
1200 x 600	IP-SSID12060
1200 x 800	IP-SSID12080
400 x 1000	IP-SSID40100
600 x 1000	IP-SSID60100
1000 x 1000	IP-SSID100100
1200 x 1000	IP-SSID120100
1200 x 1200	IP-SSID120120



Distribution Board Kits | Wall Mounted



IP Enclosures distribution board Kits are designed to be easily fitted without drilling. The separate internal chassis frame can be fitted with components and wired prior to assembly into the enclosure. The removable escutcheon plates provide protection to the full perimeter of the enclosure.

The IP Enclosures 12, 24 and 36 pole distribution board kits are designed to be easily fitted to IP Enclosures electrical enclosures without drilling. They can be fitted into steel and stainless steel enclosures.

Distribution board kits are suitable for steel and stainless steel enclosures. The separate internal chassis frame can be fitted with components and wired prior to assembly into the enclosure without drilling. Removable escutcheon plates provide protection to the perimeter of the enclosure.

Chassis Material: Galv Sheet Steel

Escutcheon Plates: UL approved epoxy polyester powder coated with a textured finish. 80-120 micron average thickness. The standard electrical enclosure colour is RAL7035. A full range of other colour options are available upon request.

Slotted Din Rail Material: Electrogalvanised Steel 7.5x35 RoHS Compliant. High quality DIN Rail manufactured from electrogalvanised steel for increased corrosion resistance. Standard 35mm wide symmetrical TS35 DIN Rail compatible with EN50022 and DIN46277-3.

- Material: Steel
- Plating: ALKALI ZINC Cr+3 TOP COAT (10-12 Microns)
- Standards: DIN5022, DIN5033, EN60715. RoHS Compliant.
- Dimensions: 7.5 mm deep x 35 mm wide.
- Colour: Silver
- Type: TS35 Slotted

Part Number	Size
SKU	Pole, H x W (mm)
IP-DB12	12 Pole to suit 300H x 400W Enclosure
IP-DB24	24 Pole to suit 400H x 400W Enclosure
IP-DB36	36 Pole to suit 600H x 400W Enclosure



Accessories

RH

Rain Hoods | Wall Mounted



IP Enclosures provide a range of standard rain hoods for steel and stainless steel electrical enclosures to prevent settling and building up of liquids, corrosive solids, minerals, dust, dirt and debris on top of the enclosure.

IP Enclosures provide a range of standard rain hoods for steel and stainless steel electrical enclosures. All IP Enclosures wall mounted electrical enclosures are manufactured with nutserts to accommodate rain hoods without drilling.

Rain hoods are used to prevent settling and building up of liquids, corrosive solids, minerals, dust, dirt and debris on top of an electrical enclosure. If corrosive liquids and solids settle and build up on top of an enclosure, the integrity of the coating and material may be compromised which may lead to corrosion and ingress of liquids and solids into the enclosure. Without maintenance, this may compromise internal electrical components and could increase risk of electric shock.

IP Enclosures rain hoods are easily fitted onto IP Enclosures electrical enclosures. All IP Enclosures electrical enclosures are manufactured with nutserts to accommodate optional rain hoods without drilling to ensure that the IP rating is maintained. Rain hoods are provided with fasteners.

STEEL RANGE

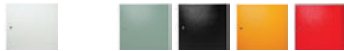
Material: 1.5mm galvanised steel sheet

Surface Treatment: UL approved epoxy polyester powder coated with a textured finish. 80-120 micron average thickness. Standard colour: RAL7035.

STAINLESS STEEL RANGE

Material: 1.2-1.5mm Grade 316/316L Stainless Steel.

STEEL



Size	Part Number	Part Number Suffix
W x D (mm)	Rain Hood	Optional Colours
200 x 150	IP-PSRH2015	-T33 -BLK -OR -RED
300 x 150	IP-PSRH3015	-T33 -BLK -OR -RED
300 x 200	IP-PSRH3020	-T33 -BLK -OR -RED
400 x 150	IP-PSRH4015	-T33 -BLK -OR -RED
400 x 200	IP-PSRH4020	-T33 -BLK -OR -RED
400 x 250	IP-PSRH4025	-T33 -BLK -OR -RED
500 x 200	IP-PSRH5020	-T33 -BLK -OR -RED
500 x 250	IP-PSRH5025	-T33 -BLK -OR -RED
600 x 200	IP-PSRH6020	-T33 -BLK -OR -RED
600 x 250	IP-PSRH6025	-T33 -BLK -OR -RED
600 x 300	IP-PSRH6030	-T33 -BLK -OR -RED
800 x 200	IP-PSRH8020	-T33 -BLK -OR -RED
800 x 300	IP-PSRH8030	-T33 -BLK -OR -RED
800 x 400	IP-PSRH8040	-T33 -BLK -OR -RED
1000 x 300	IP-PSRH10030	-T33 -BLK -OR -RED
1000 x 400	IP-PSRH10040	-T33 -BLK -OR -RED
1200 x 300	IP-PSRH12030	-T33 -BLK -OR -RED
1200 x 400	IP-PSRH12040	-T33 -BLK -OR -RED

STAINLESS STEEL

Size	Part Number
W x D (mm)	Rain Hood
200 x 150	IP-SSRH2015
300 x 150	IP-SSRH3015
300 x 200	IP-SSRH3020
400 x 150	IP-SSRH4015
400 x 200	IP-SSRH4020
400 x 250	IP-SSRH4025
500 x 200	IP-SSRH5020
500 x 250	IP-SSRH5025
600 x 200	IP-SSRH6020
600 x 250	IP-SSRH6025
600 x 300	IP-SSRH6030
800 x 200	IP-SSRH8020
800 x 300	IP-SSRH8030
800 x 400	IP-SSRH8040
1000 x 300	IP-SSRH10030
1000 x 400	IP-SSRH10040
1200 x 300	IP-SSRH12030
1200 x 400	IP-SSRH12040



Accessories

Shelf Kits

SHL



IP Enclosures provide a range of adjustable component shelf kits for wall mounted electrical enclosures.

COMPONENT SHELF (Height Adjustable)

Shelf systems have many uses and can be used for component storage, separation and battery storage. Fixed shelves are pressed to provide strength and are provided with vertical rails and fasteners for ease of installation. Multiple shelves can be fitted into each cabinet and shelves can be fully adjusted to the correct positions.

Material: 1.2 to 1.5 mm galvanised steel sheet

Part Number	Size
SKU	W x D (mm)
IP-SHL6030	600 W x 300 D
IP-SHL6040	600 W x 400 D
IP-SHL8030	800 W x 300 D
IP-SHL8040	800 W x 400 D
IP-SHL10030	1000 W x 300 D
IP-SHL10040	1000 W x 400 D
IP-SHL12030	1200 W x 300 D
IP-SHL12040	1200 W x 400 D



Accessories

Mounting Brackets & Stands



IP Enclosures provide a range of electrical enclosure mounting solutions including pole mounting brackets.

WALL MOUNT BRACKETS

Part Number	Description
IP-WMBKIT	Wall Mount Bracket Kit (4 Brackets including fasteners)
IP-SSWMBKIT	Stainless Steel Wall Mount Bracket Kit (4 Brackets including fasteners)

POLE MOUNT BRACKETS

Part Number	Description
IP-PMB	Pole Mount Bracket
IP-SSPMB	Stainless Steel Pole Mount Bracket

U-CHANNEL PROFILES

Steel

Part Number	Length (mm)
IP-PMP200	200
IP-PMP300	300
IP-PMP400	400
IP-PMP500	500
IP-PMP600	600
IP-PMP1200	1200

Stainless Steel

Part Number	Length (mm)
IP-SSPMP200	200
IP-SSPMP300	300
IP-SSPMP400	400
IP-SSPMP500	500
IP-SSPMP600	600
IP-SSPMP1200	1200

POLE MOUNT CLAMPS

Steel

Part Number	Size (mm OD)
IP-PMC60	60mm OD
IP-PMC89	89mm OD
IP-PMC114	114mm OD

Stainless Steel

Part Number	Size (mm OD)
IP-SSPMC60	60mm OD
IP-SSPMC89	89mm OD
IP-SSPMC114	114mm OD

STANDS

Steel

Part Number	Height (mm)
IP-STN250	250
IP-STN450	450
IP-STN650	650
IP-STN850	850

Stainless Steel

Part Number	Height (mm)
IP-SSSTN250	250
IP-SSSTN450	450
IP-SSSTN650	650
IP-SSSTN850	850

PLINTHS (150mm High)

Steel



Stainless Steel

Part Number	W x D (mm)	Suffix	Part Number	W x D (mm)
IP-PLINTH6030	600W x 300D	-T33 -BLK -OR	IP-SSPLINTH6030	600W x 300D
IP-PLINTH6040	600W x 400D	-T33 -BLK -OR	IP-SSPLINTH6040	600W x 400D
IP-PLINTH8030	800W x 300D	-T33 -BLK -OR	IP-SSPLINTH8030	800W x 300D
IP-PLINTH8040	800W x 400D	-T33 -BLK -OR	IP-SSPLINTH8040	800W x 400D
IP-PLINTH10030	1000W x 300D	-T33 -BLK -OR	IP-SSPLINTH10030	1000W x 300D
IP-PLINTH10040	1000W x 400D	-T33 -BLK -OR	IP-SSPLINTH10040	1000W x 400D
IP-PLINTH12030	1200W x 300D	-T33 -BLK -OR	IP-SSPLINTH12030	1200W x 300D
IP-PLINTH12040	1200W x 400D	-T33 -BLK -OR	IP-SSPLINTH12040	1200W x 400D



Accessories

Earth Kits, 19" Rails, Plan Pockets, DIN Rail



IP Enclosures provide a wide range of accessories including wiring plan pockets. This includes self-adhesive polycarbonate, steel and stainless steel wiring plan pockets.

Accessories

Earthing Kits

Standard earthing kits are available. Earthing kits consist of:

- Earth wire with ring connection
- 2 x M6 Nuts (to suit electrical enclosure earth connection points)
- Earth sticker labels
- Instruction diagram

Part Number: IP-EK01 - Standard Earthing Kit

19" Data Rack Rail Kits

Easily convert a standard wall mounted electrical enclosure into an IP66 19" Data Rack using our 19" Data Rack Kits. Simply fit and tighten four nuts. These kits are designed to fit our 600mm wide IP66 wall mounted electrical enclosures.

Material: Grade 316 Stainless Steel

Part Numbers:

IP-SS19R600 - 19" 11RU to suit 600 H x 600 W Electrical Enclosure

IP-SS19R800 - 19" 16RU to suit 800 H x 600 W Electrical Enclosure

Wiring Plan Pockets

IP Enclosures provide A4 wiring plan pockets in polycarbonate, steel and stainless steel. Wiring plan pockets are sized to shroud unfolded, laminated A4 sized drawings and documents.

Part Numbers:

IP-PCPPA4 – A4 wiring plan pocket, Polycarbonate

IP-PSPPA4 – A4 wiring plan pocket, Powdercoated Steel

IP-SSPPA4 – A4 wiring plan pocket, 316 Stainless Steel

Door Struts

Gas Door Struts can be provided separately or fitted to custom enclosures. (For door stays, refer to locking solutions)

Part Number: IP-STRUT1

Slotted Din Rail 7.5 x 35 x 2m RoHS Compliant

High quality DIN Rail manufactured from electrogalvanised steel for increased corrosion resistance. RoHS-compliant (Restriction of Hazardous Substances) silver-coloured plating. 35mm wide symmetrical TS35 DIN Rail compatible with EN50022 and DIN46277-3.

Material: Steel

Plating: ALKALI ZINC Cr+3 TOP COAT (10-12 Microns)

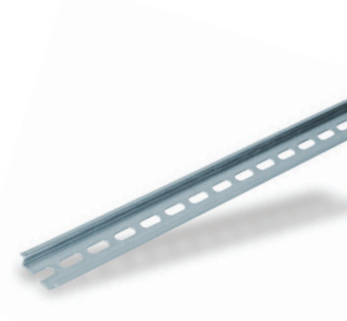
Standards: DIN5022, DIN5033, EN60715. RoHS Compliant.

Dimensions: 7.5 mm deep x 35 mm wide x 2000mm long

Colour: Silver

Type: TS35 Slotted

Part Number: IP-DINRAIL7.5X35





Protection in the toughest conditions™

IP69

Hygienic Electrical Enclosures

Food Beverage & Pharmaceutical

Hygienic Electrical Enclosures

Stainless Steel Grade 316/316L

SSH

SLOPING ROOF | SINGLE DOOR | HYGIENIC | IP69/K



The IP Enclosures SSH range of IP69 hygienic electrical enclosures are designed for applications within the food & beverage, pharmaceutical and other industries that require high cleanliness.

Features & Specifications

The SSH range of IP69 hygienic electrical enclosures are designed to prevent contamination and are suitable for the food & beverage, pharmaceutical and other industries that require high cleanliness. They are suitable for high pressure and high temperature cleaning.

Protection: Complies with IP66, IP69, IP69K

Standard: IEC62208, IEC/EN/AS60529, ISO20653, Hygiene Guidelines 

Material:

- Body: 1.5mm Grade 316/316L Stainless Steel
- Door: 1.5mm Grade 316/316L Stainless Steel
- Device Mounting Plate: 1.5mm Galvanised Steel Sheet
- Seal: Blue Silicone FDA 21 CFR 177.2600 compliant

Surface Finish: Electropolished

Body: The robust monoblock body with sloping roof is fabricated using 1.5mm Grade 316/316L Stainless Steel. The roof consists of a sloped roof design with overhang. Integral device plate mounts and M6 earth studs are provided. The body is designed to promote self draining for ease of hygienic cleaning.

Door: The reversible door is fabricated using 1.5mm Grade 316/316L Stainless Steel and is suitable for left or right hand opening. It incorporates sloped edges. The door is designed for a 110° opening. Reversible hinges are grade 316 Stainless Steel.

Seal: Removable blue silicone seal. FDA 21 CFR 177.2600 compliant for food production areas.

Lock: IP69K Grade 316 Stainless Steel Hygiene lock. Dirt resistant and easy to clean. Tested to GS-NV 6:2015/12 for hygiene requirements.

Device Mounting Plate: Fabricated using 1.5mm galvanised steel sheet, pressed to provide additional strength and supplied pre-fitted.

Accessories: 50mm long hygienic wall mount spacer brackets with blue silicone seals are provided as optional accessories. They are designed to provide a 50mm offset between the wall and the enclosure. A set of four can be ordered using part number: IP-HWMB-KIT.

Part Number	Nominal Size
SKU	H x W x D (mm)
IP-SSH302015	300 x 200 x 150
IP-SSH303015	300 x 300 x 150
IP-SSH403020	400 x 300 x 200
IP-SSH404020	400 x 400 x 200
IP-SSH504025	500 x 400 x 250
IP-SSH505025	500 x 500 x 250
IP-SSH604025	600 x 400 x 250
IP-SSH606030	600 x 600 x 300

SSH



Floor Standing Electrical Cabinets

Steel | Powder Coated

MF1S

SINGLE DOOR | IP55



IP Enclosures MF1S range of powder coated galvanised steel floor standing electrical cabinets for low voltage switchgear and controlgear assemblies are suitable for general industrial applications. All IP Enclosures are built to precision to ensure high quality standards.

Features & Specifications

MF1S

IP Enclosures MF1S range of powder coated galvanised steel floor standing electrical cabinets for low voltage switchgear and controlgear assemblies are suitable for general industrial applications.

Protection: Complies with IP55
(Independent accredited test laboratory)

Standard: IEC62208, AS/EN/IEC60529 **CE**
(IEC/EN/AS61439 Compliant)

Material:

- Main Frame: 2.0mm Galvanised Steel W Profile System
- Side, Rear & Roof Panels: 1.2mm Powder Coated Galvanised Steel Sheet
- Front Door: 2.0mm Powder Coated Galvanised Steel Sheet
- Mounting Plates: 1.5mm - 2.0mm Galvanised Steel Sheet
- Seal: EPDM

Main Frame: The robust modular main structure is fabricated using 2.0mm galvanised steel sheet W Profile system with 20mm hole pattern.

Door: The robust door is fabricated using 2.0mm powder coated galvanised steel sheet and incorporates four concealed reversible hinges. The door is designed for a 135° opening. Each door contains earth studs and an A4 document pocket.

Side, Rear and Roof Panels: Removable panels are fabricated using 1.2mm powder coated galvanised steel sheet.

Base: Base is 100mm

Door Seal: High quality EPDM replaceable door seal.

Lock: 4 point locking system with key-lock swing handle.

Device Mounting Plate: The device mounting plate is fabricated using 1.5-2.0mm mm galvanised steel sheet, pressed to provide additional strength.

Earthing: All panels are earthed to provide earthing continuity.

Surface Treatment: UL approved epoxy polyester powder coated with a textured finish. 80-120 micron average thickness.

- Standard Colour: RAL7035
- Colour of Base: RAL9005
- (Other colours available upon request).

Accessories and Baying Kits: A full range of accessories are available including baying kits. Contact us for more information.



Floor Standing Electrical Cabinets

Stainless Steel Grade 316/316L

MF1SS

SINGLE DOOR | IP55



IP Enclosures MF1SS range of grade 316 stainless steel floor standing electrical cabinets for low voltage switchgear and controlgear assemblies are suitable for general industrial applications. All IP Enclosures are built to precision to ensure high quality standards.

Features & Specifications

MF1SS

IP Enclosures MF1SS range of grade 316 stainless steel floor standing electrical cabinets for low voltage switchgear and controlgear assemblies are suitable for general industrial applications.

Protection: Complies with IP55
(Independent accredited test laboratory)

Standard: IEC62208, AS/EN/IEC60529 **CE**
(IEC61439 Compliant)

Material:

- Main Frame: 2.0mm Grade 316/316L Stainless Steel W Profile System
- Covers: 1.2mm Grade 316/316L Stainless Steel
- Front Door: 2.0mm Grade 316/316L Stainless Steel
- Mounting Plates: 1.5mm - 2.0mm Galvanised Steel Sheet
- Seal: EPDM

Surface Finish: 0.4 micron Ra surface brushed finish

Main Frame: The robust modular main structure is fabricated using 2.0mm grade 316 stainless steel W Profile system with 20mm hole pattern.

Door: The robust door is fabricated using 2.0mm grade 316 stainless steel and incorporates four concealed reversible hinges. The door is designed for a 135° opening. Each door contains earth studs and an A4 document pocket.

Side, Rear and Roof Panels: Removable panels are fabricated using 1.2mm grade 316 stainless steel.

Base: Base is 100mm

Door Seal: High quality EPDM replaceable door seal.

Lock: 4 point locking system with key-lock swing handle.

Device Mounting Plate: The device mounting plate is fabricated using 1.5-2.0mm mm galvanised steel sheet, pressed to provide additional strength.

Earthing: All panels are earthed to provide earthing continuity.

Accessories and Baying Kits: A full range of accessories are available including baying kits. Contact us for more information.



Part Number	Cabinet Size			Supplied with KIT				Accessories	Option
KIT	H	W	D	Enclosure	Side Panel	Device Plate	Base	Inner Door	Colour
IP-MFS1624040-KIT	1620	x 400	x 400	IP-MFS1624040	IP-MFSP16240	IP-MFSM16240	IP-MFSB4040	IP-MFSID16240	-OR
IP-MFS1624060-KIT	1620	x 400	x 600	IP-MFS1624060	IP-MFSP16260	IP-MFSM16240	IP-MFSB4060	IP-MFSID16240	-OR
IP-MFS1624080-KIT	1620	x 400	x 800	IP-MFS1624080	IP-MFSP16280	IP-MFSM16240	IP-MFSB4080	IP-MFSID16240	-OR
IP-MFS1624040-KIT	1620	x 600	x 400	IP-MFS1624040	IP-MFSP16040	IP-MFSM16040	IP-MFSB6040	IP-MFSID16260	-OR
IP-MFS1626060-KIT	1620	x 600	x 600	IP-MFS1626060	IP-MFSP16260	IP-MFSM16260	IP-MFSB6060	IP-MFSID16260	-OR
IP-MFS1626080-KIT	1620	x 600	x 800	IP-MFS1626080	IP-MFSP16280	IP-MFSM16260	IP-MFSB6080	IP-MFSID16260	-OR
IP-MFS1628040-KIT	1620	x 800	x 400	IP-MFS1628040	IP-MFSP16240	IP-MFSM16280	IP-MFSB8040	IP-MFSID16280	-OR
IP-MFS1628060-KIT	1620	x 800	x 600	IP-MFS1628060	IP-MFSP16260	IP-MFSM16280	IP-MFSB8060	IP-MFSID16280	-OR
IP-MFS1628080-KIT	1620	x 800	x 800	IP-MFS1628080	IP-MFSP16280	IP-MFSM16280	IP-MFSB8080	IP-MFSID16280	-OR
IP-MFS16210060-KIT	1620	x 1000	x 600	IP-MFS16210060	IP-MFSP16260	IP-MFSM162100	IP-MFSB10060	-	-OR
IP-MFS16210080-KIT	1620	x 1000	x 800	IP-MFS16210080	IP-MFSP16280	IP-MFSM162100	IP-MFSB10080	-	-OR
IP-MFS16212060-KIT	1620	x 1200	x 600	IP-MFS16212060	IP-MFSP16260	IP-MFSM162120	IP-MFSB12060	-	-OR
IP-MFS16212080-KIT	1620	x 1200	x 800	IP-MFS16212080	IP-MFSP16280	IP-MFSM162120	IP-MFSB12080	-	-OR
IP-MFS1864040-KIT	1860	x 400	x 400	IP-MFS1864040	IP-MFSP18640	IP-MFSM18640	IP-MFSB4040	IP-MFSID18640	-OR
IP-MFS1864060-KIT	1860	x 400	x 600	IP-MFS1864060	IP-MFSP18660	IP-MFSM18640	IP-MFSB4060	IP-MFSID18640	-OR
IP-MFS1864080-KIT	1860	x 400	x 800	IP-MFS1864080	IP-MFSP18680	IP-MFSM18640	IP-MFSB4080	IP-MFSID18640	-OR
IP-MFS1866040-KIT	1860	x 600	x 400	IP-MFS1866040	IP-MFSP18640	IP-MFSM18660	IP-MFSB6040	IP-MFSID18660	-OR
IP-MFS1866060-KIT	1860	x 600	x 600	IP-MFS1866060	IP-MFSP18660	IP-MFSM18660	IP-MFSB6060	IP-MFSID18660	-OR
IP-MFS1866080-KIT	1860	x 600	x 800	IP-MFS1866080	IP-MFSP18680	IP-MFSM18660	IP-MFSB6080	IP-MFSID18660	-OR
IP-MFS1868040-KIT	1860	x 800	x 400	IP-MFS1868040	IP-MFSP18640	IP-MFSM18680	IP-MFSB8040	IP-MFSID18680	-OR
IP-MFS1868060-KIT	1860	x 800	x 600	IP-MFS1868060	IP-MFSP18660	IP-MFSM18680	IP-MFSB8060	IP-MFSID18680	-OR
IP-MFS1868080-KIT	1860	x 800	x 800	IP-MFS1868080	IP-MFSP18680	IP-MFSM18680	IP-MFSB8080	IP-MFSID18680	-OR
IP-MFS18610060-KIT	1860	x 1000	x 600	IP-MFS18610060	IP-MFSP18660	IP-MFSM186100	IP-MFSB10060	IP-MFSID186100	-OR
IP-MFS18610080-KIT	1860	x 1000	x 800	IP-MFS18610080	IP-MFSP18680	IP-MFSM186100	IP-MFSB10080	IP-MFSID186100	-OR
IP-MFS18612060-KIT	1860	x 1200	x 600	IP-MFS18612060	IP-MFSP18660	IP-MFSM186120	IP-MFSB12060	IP-MFSID186120	-OR
IP-MFS18612080-KIT	1860	x 1200	x 800	IP-MFS18612080	IP-MFSP18680	IP-MFSM186120	IP-MFSB12080	IP-MFSID186120	-OR
IP-MFS2024040-KIT	2020	x 400	x 400	IP-MFS2024040	IP-MFSP20240	IP-MFSM20240	IP-MFSB4040	IP-MFSID20240	-OR
IP-MFS2024060-KIT	2020	x 400	x 600	IP-MFS2024060	IP-MFSP20260	IP-MFSM20240	IP-MFSB4060	IP-MFSID20240	-OR
IP-MFS2024080-KIT	2020	x 400	x 800	IP-MFS2024080	IP-MFSP20280	IP-MFSM20240	IP-MFSB4080	IP-MFSID20240	-OR
IP-MFS2026040-KIT	2020	x 600	x 400	IP-MFS2026040	IP-MFSP20240	IP-MFSM20260	IP-MFSB6040	IP-MFSID20260	-OR
IP-MFS2026060-KIT	2020	x 600	x 600	IP-MFS2026060	IP-MFSP20260	IP-MFSM20260	IP-MFSB6060	IP-MFSID20260	-OR
IP-MFS2026080-KIT	2020	x 600	x 800	IP-MFS2026080	IP-MFSP20280	IP-MFSM20260	IP-MFSB6080	IP-MFSID20260	-OR
IP-MFS2028040-KIT	2020	x 800	x 400	IP-MFS2028040	IP-MFSP20240	IP-MFSM20280	IP-MFSB8040	IP-MFSID20280	-OR
IP-MFS2028060-KIT	2020	x 800	x 600	IP-MFS2028060	IP-MFSP20260	IP-MFSM20280	IP-MFSB8060	IP-MFSID20280	-OR
IP-MFS2028080-KIT	2020	x 800	x 800	IP-MFS2028080	IP-MFSP20280	IP-MFSM20280	IP-MFSB8080	IP-MFSID20280	-OR
IP-MFS20210060-KIT	2020	x 1000	x 600	IP-MFS20210060	IP-MFSP20260	IP-MFSM202100	IP-MFSB10060	IP-MFSID202100	-OR
IP-MFS20210080-KIT	2020	x 1000	x 800	IP-MFS20210080	IP-MFSP20280	IP-MFSM202100	IP-MFSB10080	IP-MFSID202100	-OR
IP-MFS20212060-KIT	2020	x 1200	x *600	IP-MFS20212060	IP-MFSP20260	IP-MFSM202120	IP-MFSB12060	IP-MFSID202120	-OR
IP-MFS20212080-KIT	2020	x 1200	x *800	IP-MFS20212080	IP-MFSP20280	IP-MFSM202120	IP-MFSB12080	IP-MFSID202120	-OR

*1200 Wide Cabinets = Double Door

Part Number	Cabinet Size			Supplied with KIT				Accessories
KIT	H	W	D	Enclosure	Side Panel	Device Plate	Base	Inner Door
IP-MFSS1624040-KIT	1620	x 400	x 400	IP-MFSS1624040	IP-MFSSP16240	IP-MFSSM16240	IP-MFSSB4040	IP-MFSSID16240
IP-MFSS1624060-KIT	1620	x 400	x 600	IP-MFSS1624060	IP-MFSSP16260	IP-MFSSM16240	IP-MFSSB4060	IP-MFSSID16240
IP-MFSS1624080-KIT	1620	x 400	x 800	IP-MFSS1624080	IP-MFSSP16280	IP-MFSSM16240	IP-MFSSB4080	IP-MFSSID16240
IP-MFSS1624040-KIT	1620	x 600	x 400	IP-MFSS1624040	IP-MFSSP16040	IP-MFSSM16040	IP-MFSSB6040	IP-MFSSID16260
IP-MFSS1626060-KIT	1620	x 600	x 600	IP-MFSS1626060	IP-MFSSP16260	IP-MFSSM16260	IP-MFSSB6060	IP-MFSSID16260
IP-MFSS1626080-KIT	1620	x 600	x 800	IP-MFSS1626080	IP-MFSSP16280	IP-MFSSM16260	IP-MFSSB6080	IP-MFSSID16260
IP-MFSS1628040-KIT	1620	x 800	x 400	IP-MFSS1628040	IP-MFSSP16240	IP-MFSSM16280	IP-MFSSB8040	IP-MFSSID16280
IP-MFSS1628060-KIT	1620	x 800	x 600	IP-MFSS1628060	IP-MFSSP16260	IP-MFSSM16280	IP-MFSSB8060	IP-MFSSID16280
IP-MFSS1628080-KIT	1620	x 800	x 800	IP-MFSS1628080	IP-MFSSP16280	IP-MFSSM16280	IP-MFSSB8080	IP-MFSSID16280
IP-MFSS16210060-KIT	1620	x 1000	x 600	IP-MFSS16210060	IP-MFSSP16260	IP-MFSSM162100	IP-MFSSB10060	-
IP-MFSS16210080-KIT	1620	x 1000	x 800	IP-MFSS16210080	IP-MFSSP16280	IP-MFSSM162100	IP-MFSSB10080	-
IP-MFSS16212060-KIT	1620	x 1200	x 600	IP-MFSS16212060	IP-MFSSP16260	IP-MFSSM162120	IP-MFSSB12060	-
IP-MFSS16212080-KIT	1620	x 1200	x 800	IP-MFSS16212080	IP-MFSSP16280	IP-MFSSM162120	IP-MFSSB12080	-
IP-MFSS1864040-KIT	1860	x 400	x 400	IP-MFSS1864040	IP-MFSSP18640	IP-MFSSM18640	IP-MFSSB4040	IP-MFSSID18640
IP-MFSS1864060-KIT	1860	x 400	x 600	IP-MFSS1864060	IP-MFSSP18660	IP-MFSSM18640	IP-MFSSB4060	IP-MFSSID18640
IP-MFSS1864080-KIT	1860	x 400	x 800	IP-MFSS1864080	IP-MFSSP18680	IP-MFSSM18640	IP-MFSSB4080	IP-MFSSID18640
IP-MFSS1866040-KIT	1860	x 600	x 400	IP-MFSS1866040	IP-MFSSP18640	IP-MFSSM18660	IP-MFSSB6040	IP-MFSSID18660
IP-MFSS1866060-KIT	1860	x 600	x 600	IP-MFSS1866060	IP-MFSSP18660	IP-MFSSM18660	IP-MFSSB6060	IP-MFSSID18660
IP-MFSS1866080-KIT	1860	x 600	x 800	IP-MFSS1866080	IP-MFSSP18680	IP-MFSSM18660	IP-MFSSB6080	IP-MFSSID18660
IP-MFSS1868040-KIT	1860	x 800	x 400	IP-MFSS1868040	IP-MFSSP18640	IP-MFSSM18680	IP-MFSSB8040	IP-MFSSID18680
IP-MFSS1868060-KIT	1860	x 800	x 600	IP-MFSS1868060	IP-MFSSP18660	IP-MFSSM18680	IP-MFSSB8060	IP-MFSSID18680
IP-MFSS1868080-KIT	1860	x 800	x 800	IP-MFSS1868080	IP-MFSSP18680	IP-MFSSM18680	IP-MFSSB8080	IP-MFSSID18680
IP-MFSS18610060-KIT	1860	x 1000	x 600	IP-MFSS18610060	IP-MFSSP18660	IP-MFSSM186100	IP-MFSSB10060	IP-MFSSID186100
IP-MFSS18610080-KIT	1860	x 1000	x 800	IP-MFSS18610080	IP-MFSSP18680	IP-MFSSM186100	IP-MFSSB10080	IP-MFSSID186100
IP-MFSS18612060-KIT	1860	x 1200	x 600	IP-MFSS18612060	IP-MFSSP18660	IP-MFSSM186120	IP-MFSSB12060	IP-MFSSID186120
IP-MFSS18612080-KIT	1860	x 1200	x 800	IP-MFSS18612080	IP-MFSSP18680	IP-MFSSM186120	IP-MFSSB12080	IP-MFSSID186120
IP-MFSS2024040-KIT	2020	x 400	x 400	IP-MFSS2024040	IP-MFSSP20240	IP-MFSSM20240	IP-MFSSB4040	IP-MFSSID20240
IP-MFSS2024060-KIT	2020	x 400	x 600	IP-MFSS2024060	IP-MFSSP20260	IP-MFSSM20240	IP-MFSSB4060	IP-MFSSID20240
IP-MFSS2024080-KIT	2020	x 400	x 800	IP-MFSS2024080	IP-MFSSP20280	IP-MFSSM20240	IP-MFSSB4080	IP-MFSSID20240
IP-MFSS2026040-KIT	2020	x 600	x 400	IP-MFSS2026040	IP-MFSSP20240	IP-MFSSM20260	IP-MFSSB6040	IP-MFSSID20260
IP-MFSS2026060-KIT	2020	x 600	x 600	IP-MFSS2026060	IP-MFSSP20260	IP-MFSSM20260	IP-MFSSB6060	IP-MFSSID20260
IP-MFSS2026080-KIT	2020	x 600	x 800	IP-MFSS2026080	IP-MFSSP20280	IP-MFSSM20260	IP-MFSSB6080	IP-MFSSID20260
IP-MFSS2028040-KIT	2020	x 800	x 400	IP-MFSS2028040	IP-MFSSP20240	IP-MFSSM20280	IP-MFSSB8040	IP-MFSSID20280
IP-MFSS2028060-KIT	2020	x 800	x 600	IP-MFSS2028060	IP-MFSSP20260	IP-MFSSM20280	IP-MFSSB8060	IP-MFSSID20280
IP-MFSS2028080-KIT	2020	x 800	x 800	IP-MFSS2028080	IP-MFSSP20280	IP-MFSSM20280	IP-MFSSB8080	IP-MFSSID20280
IP-MFSS20210060-KIT	2020	x 1000	x 600	IP-MFSS20210060	IP-MFSSP20260	IP-MFSSM202100	IP-MFSSB10060	IP-MFSSID202100
IP-MFSS20210080-KIT	2020	x 1000	x 800	IP-MFSS20210080	IP-MFSSP20280	IP-MFSSM202100	IP-MFSSB10080	IP-MFSSID202100
IP-MFSS20212060-KIT	2020	x 1200	x* 600	IP-MFSS20212060	IP-MFSSP20260	IP-MFSSM202120	IP-MFSSB12060	IP-MFSSID202120
IP-MFSS20212080-KIT	2020	x 1200	x* 800	IP-MFSS20212080	IP-MFSSP20280	IP-MFSSM202120	IP-MFSSB12080	IP-MFSSID202120

*1200 Wide Cabinets = Double Door

Inner Door Escutcheons | Floor Standing



Inner door escutcheons are designed to be easily fitted into new or existing IP Enclosures floor standing electrical cabinets.

Inner door escutcheons are an optional feature that can be easily fitted into IP Enclosures floor standing electrical cabinets. Inner door kits are provided with the inner door, two vertical rails and fasteners for easy assembly.

IP Enclosures provide a range of inner door escutcheons for floor standing electrical cabinets. Inner doors enable operators to access control equipment inside an electrical cabinet while maintaining separation of hazardous voltage equipment within the hazardous voltage area behind the inner door. Hinged escutcheon plates accommodate control components such as circuit breaker handles, pushbuttons, indicator lights and HMI's. Each inner door kit is provided with the inner door, two vertical rails and fasteners for easy assembly into the cabinet.

STEEL RANGE

Material: 1.5mm galvanised steel sheet

Lock: Chrome 3mm double bit insert quarter turn locks

Surface Treatment: UL approved epoxy polyester powder-coated with a textured finish 80-120 micron average thickness. Standard colour: RAL7035.

STAINLESS STEEL RANGE

Material: 1.5mm Grade 316/316L stainless steel

Locks: 304ss 8mm square drive quarter turn locks. (316ss optional).



STEEL



Size		Accessories	Option
H	W	Inner Door	Colour
1620 x 400		IP-MFSID16240	-OR
1620 x 600		IP-MFSID16260	-OR
1620 x 800		IP-MFSID16280	-OR
1860 x 400		IP-MFSID18640	-OR
1860 x 600		IP-MFSID18660	-OR
1860 x 800		IP-MFSID18680	-OR
1860 x 1000		IP-MFSID186100	-OR
1860 x 1200		IP-MFSID186120	-OR
2020 x 400		IP-MFSID20240	-OR
2020 x 600		IP-MFSID20260	-OR
2020 x 800		IP-MFSID20280	-OR
2020 x 1000		IP-MFSID202100	-OR
2020 x 1200		IP-MFSID202120	-OR

STAINLESS STEEL

Size		Accessories
H	W	Inner Door
1620 x 400		IP-MFSSID16240
1620 x 600		IP-MFSSID16260
1620 x 800		IP-MFSSID16280
1860 x 400		IP-MFSSID18640
1860 x 600		IP-MFSSID18660
1860 x 800		IP-MFSSID18680
1860 x 1000		IP-MFSSID186100
1860 x 1200		IP-MFSSID186120
2020 x 400		IP-MFSSID20240
2020 x 600		IP-MFSSID20260
2020 x 800		IP-MFSSID20280
2020 x 1000		IP-MFSSID202100
2020 x 1200		IP-MFSSID202120



Accessories

Shelf Kits | Floor Standing

SHL



IP Enclosures provide a range of fixed and sliding adjustable shelves for floor standing electrical cabinets.

IP Enclosures provide a range of fixed and sliding adjustable component shelf kits for floor standing electrical cabinets.

FIXED COMPONENT SHELF (Height Adjustable)

Fixed shelf systems have many uses and can be used for component storage, separation and battery storage. Fixed shelves are pressed to provide strength. They are provided with fasteners and can be fitted without drilling. Multiple shelves can be fitted into each cabinet and shelves can be fully adjusted to the correct positions.

Material: 1.2 to 1.5 mm galvanised steel sheet

Surface Treatment: UL approved epoxy polyester powder coated with a textured finish. 80-120 micron average thickness. The standard colour is RAL7035. A full range of other colour options are available upon request.

Part Number	Description
SKU	Width x Depth (mm)
IP-SHL6060	600W x 600D Shelf System
IP-SHL6080	600W x 800D Shelf System
IP-SHL8060	800W x 600D Shelf System
IP-SHL8080	800W x 800D Shelf System
IP-SHL10060	1000W x 600D Shelf System
IP-SHL10080	1000W x 800D Shelf System



SLIDING SHELF / LAPTOP DRAWER

Sliding shelf (laptop drawer) kits are provided assembled complete with 4 screws for fast and easy installation into floor standing electrical cabinets without drilling.

Surface Treatment: UL approved epoxy polyester powder coated with a textured finish. 80-120 micron average thickness. The standard colour is RAL7035. A full range of other colour options are available upon request.

Part Number	Description
SKU	Width (mm)
IP-MFS600LECTERN	600W Sliding Shelf
IP-MFS800LECTERN	800W Sliding Shelf



Mounted IP66 19" Data Racks

SDW

Steel | Powder Coated

SINGLE DOOR | IP66




The IP Enclosures SDW range of wall mounted IP66 19" data racks are designed for heavy duty outdoor applications to house sensitive data network equipment in harsh environments. They are suitable for internal and external installations. All IP Enclosures are built to precision to ensure consistent high quality standards.

Features & Specifications

IP Enclosures SDW range of IP66 19" data racks are designed for heavy duty outdoor applications to house sensitive data network equipment in harsh environments. They are suitable for internal and external installations. All IP Enclosures are built to precision to ensure consistent high quality standards.

Protection: Complies with IP66 IK10

Standard: AS/EN/IEC60529, EIA-310-D 

Material:

- Enclosure Body: 1.5mm galvanised steel sheet
- Enclosure Door: 1.5mm galvanised steel sheet
- 19" Data Rack Rails: 1.5mm galvanised steel sheet
- Enclosure Seal: Polyurethane. UL listed.

Body: The robust monoblock body is 1.5mm galvanised steel sheet. Flat face sealing surfaces increase seal life. Pre-fitted blind nutserts are incorporated to accommodate wall mounting brackets to eliminate drilling to retain IP rating. The profiled roof design protrudes past the seal, flush with the front of the door face. A galvanised steel gland plate is also incorporated into the bottom face.

Door: The surface mounted door is 1.5mm galvanised steel sheet. It incorporates concealed removable hinges with captive pins. Doors are also designed for a 110° opening. Each door incorporates a high quality machine-applied foamed in place (FIP) Polyurethane seal.

Seal: A high quality machine-applied full perimeter UL listed Polyurethane seal foamed in place (FIP) provides excellent sealing over a long life. Temperature resistance -40°C to 80°C (160°C short term loading).

Lock: Chrome 3mm double bit insert quarter turn lock with key. A full range of locking solutions are available upon request.

Gland Plate: Gland plates are incorporated into the bottom face of the enclosure for cable management. The size and quantity vary according to enclosure size.

Surface Treatment: UL approved epoxy polyester powder coated with a textured finish 80-120 micron average thickness.

- Standard Colour: RAL7035 (*Other colours available upon request*).

Accessories: A range of data rack accessories are available.



Part Number	Size	Accessories	Part Number Suffix
Standard	U/RU x Depth (mm)	Transparent Door	Optional Colours
IP-SDW4RU30	4RU x 300 Deep 19" Data Rack	-	-BLK
IP-SDW6RU30	6RU x 300 Deep 19" Data Rack	IP-3060WINDOOR	-BLK
IP-SDW6RU40	6RU x 400 Deep 19" Data Rack	IP-3060WINDOOR	-BLK
IP-SDW9RU40	9RU x 400 Deep 19" Data Rack	-	-BLK
IP-SDW12RU40	12RU x 400 Deep 19" Data Rack	IP-6060WINDOOR	-BLK
IP-SDW12RU60	12RU x 600 Deep 19" Data Rack	IP-6060WINDOOR	-BLK

Mounted IP66 19" Data Racks

ADW

Marine Grade Aluminium | Powder Coated

SINGLE DOOR | IP66



The IP Enclosures ADW range of aluminium wall mounted IP66 19" data racks are designed for heavy duty outdoor applications to house sensitive data network equipment in harsh environments. They are suitable for internal and external installations. All IP Enclosures are built to precision to ensure consistent high quality standards.

Features & Specifications

ADW

IP Enclosures ADW range of aluminium IP66 19" data racks are designed for heavy duty outdoor applications to house sensitive data network equipment in harsh environments. They are suitable for internal and external installations. All IP Enclosures are built to precision to ensure consistent high quality standards.

Protection: Complies with IP66 IK10

Standard: AS/EN/IEC60529, EIA-310-D

Material:

- Enclosure Body: 1.5mm Marine Grade Aluminium 5754-H111
- Enclosure Door: 1.5mm Marine Grade Aluminium 5754-H111
- Enclosure Seal: Polyurethane. UL listed.

Body: The robust monoblock body is fabricated from 1.5mm marine grade aluminium sheet. Flat face sealing surfaces increase seal life. Pre-fitted blind nuts are incorporated to accommodate wall mounting brackets to eliminate drilling to retain IP rating. The profiled roof design protrudes past the seal, flush with the front of the door face.

Door: The surface mounted door is fabricated from 1.5mm aluminium sheet. It incorporates concealed removable hinges with captive pins. Doors are also designed for a 110° opening. Each door incorporates a high quality machine-applied foamed in place (FIP) Polyurethane seal.

Seal: A high quality machine-applied full perimeter UL listed Polyurethane seal foamed in place (FIP) provides excellent sealing over a long life. Temperature resistance -40°C to 80°C (160°C short term loading).

Lock: Chrome 3mm double bit insert quarter turn lock with key. A full range of locking solutions are available upon request.

Gland Plate: Gland plates are incorporated into the bottom face of the enclosure for cable management. The size and quantity vary according to enclosure size.

Surface Treatment: UL approved epoxy polyester powder coated with a textured finish 80-120 micron average thickness.

- Standard Colour: RAL7035 Light Grey and RAL9005 Jet Black are standard colours. *(Other colours available upon request).*

Accessories: A range of data rack accessories are available.



Part Number	Size	Accessories	Part Number Suffix
Standard	U/RU x Depth (mm)	Transparent Door	Optional Colours
IP-ADW4RU30	4RU x 300 Deep 19" Data Rack	-	-BLK
IP-ADW6RU30	6RU x 300 Deep 19" Data Rack	IP-A3060WINDOOR	-BLK
IP-ADW6RU45	6RU x 400 Deep 19" Data Rack	IP-A3060WINDOOR	-BLK
IP-ADW9RU45	9RU x 400 Deep 19" Data Rack	-	-BLK
IP-ADW12RU45	12RU x 400 Deep 19" Data Rack	IP-A6060WINDOOR	-BLK
IP-ADW12RU60	12RU x 600 Deep 19" Data Rack	IP-A6060WINDOOR	-BLK

Floor Standing IP66 19" Data Racks

Steel | Powder Coated

SD

SINGLE DOOR | IP66



The IP Enclosures SD range of floor standing IP66 19" data racks are designed for heavy duty outdoor applications to house sensitive data network equipment in harsh environments. They are suitable for internal and external installations. All IP Enclosures are built to precision to ensure consistent high quality standards.

Features & Specifications

IP Enclosures SD range of IP66 19" data racks are designed for heavy duty outdoor applications to house sensitive data network equipment in harsh environments. They are suitable for internal and external installations. All IP Enclosures are built to precision to ensure consistent high quality standards.

Protection: Complies with IP66 IK10

Standard: AS/EN/IEC60529, EIA-310-D 

Material:

- Enclosure Body: 1.5mm galvanised steel sheet
- Enclosure Door: 1.5mm galvanised steel sheet
- 19" Data Rack Rails: 1.5mm galvanised steel sheet
- Enclosure Seal: Polyurethane

Body: The robust monoblock body is 1.5mm galvanised steel sheet. Precision automated manufacturing equipment ensures accuracy and consistent high quality. Flat face sealing surfaces increase seal life. A gland plate with seal is also incorporated into the bottom face.

Door: The surface mounted door is 1.5mm galvanised steel sheet. It incorporates concealed removable hinges with captive pins. Doors are also designed for a 110° opening. Each door contains a high quality machine-applied foamed in place (FIP) Polyurethane seal.

Door Seal: A high quality full perimeter seal provides excellent sealing over a long life. It is machine applied Polyurethane foamed in place (FIP).

Lock: 3 point locking system with key-lock swing handle. A full range of locking solutions are available upon request.

Gland Plate: Gland plates with seals are incorporated into the bottom face of the enclosure for cable management. The size and quantity vary according to enclosure size.

Surface Treatment: UL approved epoxy polyester powder coated with a textured finish. 80-120 micron average thickness. Standard Colour: RAL7035.

Part Number	Size	No. of U (RU)	Cabinet Size
SKU	19"	U/RU	U/RU H x W x D (mm)
IP-SD606040	19"	12RU	12RU 600 x 600 x 400
IP-SD806040	19"	16RU	16RU 800 x 600 x 400
IP-SD806060	19"	16RU	16RU 800 x 600 x 600
IP-SD806080	19"	16RU	16RU 800 x 600 x 800
IP-SD1206040	19"	24RU	24RU 1200 x 600 x 400
IP-SD1206060	19"	24RU	24RU 1200 x 600 x 600
IP-SD1206080	19"	24RU	24RU 1200 x 600 x 800
IP-SD1606060	19"	32RU	32RU 1600 x 600 x 600
IP-SD2006060	19"	42RU	42RU 2000 x 600 x 600
IP-SD2006080	19"	42RU	42RU 2000 x 600 x 800



Floor Standing IP66 19" Data Racks

Stainless Steel Grade 316/316L

SSD

SINGLE DOOR | IP66



The IP Enclosures SSD range of stainless steel floor standing IP66 19" data racks are designed for extreme duty to house sensitive data network equipment in harsh environments. They are suitable for internal and external installations. All IP Enclosures are built to precision to ensure consistent high quality standards.

Features & Specifications

IP Enclosures SSD range of IP66 19" stainless steel data racks are designed for extreme duty to house sensitive data network equipment in harsh environments. They are suitable for internal and external installations.

Protection: Complies with IP66 IK10

Standard: AS/EN/IEC60529, EIA-310-D 

Material:

- Enclosure Body: 1.5mm Grade 316/316L Stainless Steel
- Enclosure Door: 1.5mm Grade 316/316L Stainless Steel
- 19" Data Rack Rails: 1.5mm Grade 316/316L Stainless Steel
- Enclosure Seal: Polyurethane

Surface Finish: 0.4 micron Ra surface brushed finish

Body: The robust monoblock body is fabricated using 1.5mm Grade 316/316L Stainless Steel. Cutting, pressing and full continuous seam welding using precision automated manufacturing equipment to ensure accuracy and consistent high quality. Flat face sealing surfaces are provided to increase seal life. A stainless steel gland plate with seal is also incorporated into the bottom face.

Door: The robust surface mounted door is fabricated using 1.5mm Grade 316/316L Stainless Steel and incorporates concealed removable hinges with captive pins. The door is designed for a 110° opening. Each door contains a high quality machine-applied foamed in place (FIP) Polyurethane seal.

Door Seal: A high quality machine-applied continuous foamed in place (FIP) Polyurethane seal provides excellent sealing over a long life.

Lock: 3 point locking system with key-lock swing handle. A full range of locking solutions are available upon request.

Gland Plate: Gland plates are incorporated into the bottom face of the enclosure for cable management. They are provided with gaskets and fasteners. The size and quantity vary according to enclosure size.

Part Number	Size	No. of U (RU)	Cabinet Size
SKU	19"	U/RU	U/RU H x W x D (mm)
IP-SSD606040	19"	12RU	12RU 600 x 600 x 400
IP-SSD806040	19"	16RU	16RU 800 x 600 x 400
IP-SSD806060	19"	16RU	16RU 800 x 600 x 600
IP-SSD806080	19"	16RU	16RU 800 x 600 x 800
IP-SSD1206040	19"	24RU	24RU 1200 x 600 x 400
IP-SSD1206060	19"	24RU	24RU 1200 x 600 x 600
IP-SSD1206080	19"	24RU	24RU 1200 x 600 x 800
IP-SSD1606060	19"	32RU	32RU 1600 x 600 x 600
IP-SSD2006060	19"	42RU	42RU 2000 x 600 x 600
IP-SSD2006080	19"	42RU	42RU 2000 x 600 x 800



19" Data Rack Accessories



The IP Enclosures range of 19" rack-mounted DIN rail and distribution panels provide flexibility to fit DIN mounted electrical and control components into 19" racks.

Features & Specifications

SDDIN

Standard: Compatible with 19" racks EIA-310-D

Slotted Din Rail Material: Electrogalvanised Steel 7.5 x 35 RoHS Compliant. Standard 35mm wide symmetrical TS35 DIN Rail compatible with EN50022 and DIN46277-3.

1RU 19" DIN Terminal Rail

Part Number: IP-SDDINPANEL1

1RU 19" Cover Panel

Part Number: IP-SDCOVER1



2RU 19" DIN Terminal Rail

Part Number: IP-SDDINPANEL2

2RU 19" Cover Panel

Part Number: IP-SDCOVER2



3RU 19" DIN Terminal Rail

Part Number: IP-SDDINPANEL3

3RU 19" Cover Panel

Part Number: IP-SDCOVER3



3RU 19" Distribution Board

Part Number: IP-SDDP3

(Supplied with Cover Panel)

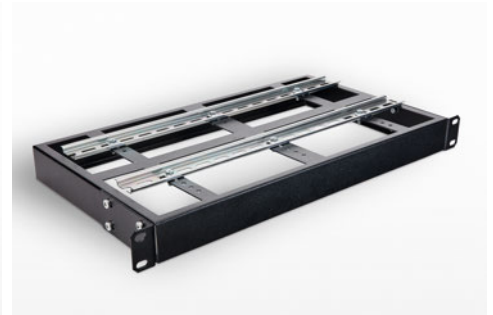


1RU 19" DIN Rail Shelf Single

Part Number: IP-SDDINSHELF1-150

1RU 19" DIN Rail Shelf Double

Part Number: IP-SDDINSHELF1-250



Infrastructure Field Cabinets

Steel | Powder Coated

FC

SINGLE DOOR | IP66



Plinth-mounted field cabinets house sensitive data network and electrical equipment for heavy duty outdoor applications including road/traffic management and intelligent transport systems.

Features & Specifications

Plinth-mounted infrastructure field cabinets are designed to house sensitive data network and electrical equipment for a variety of heavy duty outdoor applications including road/traffic management and intelligent transport systems.

Protection: Complies with IP66
(Excluding cutouts for fans/filters. Vent hoods covering fan/filter cutouts IP55)

Standard: IEC62208, IEC/EN/AS60529, EIA-310-D

Material:

- Body and Plinth: 2.0mm galvanised steel sheet
- Doors: 2.0mm galvanised steel sheet
- 19" Data Rack Rails: 1.5mm galvanised steel sheet
- Gland Plate: 3.0mm aluminium
- Enclosure Seal: Polyurethane

Body: The robust monoblock body is fabricated using 2.0mm galvanised steel sheet. The body is fitted with rain hood/sunshield, plinth, vent hoods and 4 x lifting eye bolts. Flat face sealing surfaces are provided to increase seal life. A 3mm galvanised steel split gland plate is also incorporated into the bottom face. Four cutouts 125mm x 125mm are provided to house fans and filters and each are covered with removable vent hoods. Precision automated manufacturing equipment ensures accuracy and consistent high quality. (Fans and filters ordered separately).

Doors: The front and rear doors are fabricated using 2.0mm galvanised steel sheet and are designed to provide flush recessed mounting to prevent vandalism and unauthorised access. The doors incorporate concealed removable hinges with captive pins. They are designed for a 110° opening and are provided with heavy duty door stays.

19" Data Rack Rails: Front and rear 19" data rack rails are fabricated from 1.5mm galvanised steel sheet.

Door Seals: Polyurethane foamed in place (FIP) full perimeter door seals provide excellent sealing over a long life. Temperature resistance: -40°C to 80°C.

Locks: Each door includes a 3 point locking system with key-lock swing handle. A full range of locking solutions are available upon request.

Gland Plate: 3mm aluminium split gland plates are incorporated into the bottom of the enclosure for cable management.

Surface Treatment: UL approved epoxy polyester powder coated with a smooth finish. 80-120 micron average thickness.

Colour: T33 Smoke Blue. (Other colour options available upon request.)

Part Number	Description
SKU	U/RU H x W x D
IP-1377562-T33	24RU 1370H x 750W x 620D
IP-1677562-T33	30RU 1675H x 750W x 620D
IP-1977562-T33	36RU 1975H x 750W x 620D
IP-2277562-T33	42RU 2275H x 750W x 620D



Infrastructure Field Cabinets

FCA

Marine Grade Aluminium | Powder Coated

SINGLE DOOR | IP66



Marine grade aluminium plinth-mounted field cabinets house sensitive data network and electrical equipment for heavy duty outdoor applications including road/traffic management and intelligent transport systems.

Features & Specifications

Marine grade aluminium plinth-mounted infrastructure field cabinets are designed to house sensitive data network and electrical equipment for a variety of heavy duty outdoor applications including road/traffic management and intelligent transport systems.

Protection: Complies with IP66
(Excluding cutouts for fans/filters. Vent hoods covering fan/filter cutouts IP55)

Standard: IEC62208, IEC/EN/AS60529, EIA-310-D

Material:

- Body and Plinth: 2.5mm Marine Grade Aluminium 5754-H111
- Doors: 2.5mm Marine Grade Aluminium 5754-H111
- 19" Data Rack Rails: 1.5mm galvanised steel sheet
- Gland Plate: 5.0mm Aluminium
- Enclosure Seal: Polyurethane

Body: The robust monoblock body is fabricated using 2.5mm marine grade aluminium. The body is fitted with rain hood/sunshield, plinth, vent hoods and 4 x lifting eye bolts. Flat face sealing surfaces are provided to increase seal life. A 5.0mm aluminium split gland plate is also incorporated into the bottom face. Four cutouts 125mm x 125mm are provided to house fans and filters and each are covered with removable vent hoods. Precision automated manufacturing equipment ensures accuracy and consistent high quality. (Fans and filters ordered separately).

Doors: The front and rear doors are fabricated using 2.5mm marine grade aluminium and are designed to provide flush recessed mounting to prevent vandalism and unauthorised access. The doors incorporate concealed removable hinges with captive pins. They are designed for a 110° opening and are provided with heavy duty door stays.

19" Data Rack Rails: Front and rear 19" data rack rails are fabricated from 1.5mm galvanised steel sheet.

Door Seals: Polyurethane foamed in place (FIP) full perimeter door seals provide excellent sealing over a long life. Temperature resistance: -40°C to 80°C.

Locks: Each door includes a 3 point locking system with key-lock swing handle. A full range of locking solutions are available upon request.

Gland Plate: 3mm aluminium split gland plates are incorporated into the bottom of the enclosure for cable management.

Surface Treatment: UL approved epoxy polyester powder coated with a smooth finish. 80-120 micron average thickness.

Colour: T33 Smoke Blue. (Other colour options available upon request.)

Part Number	Description
SKU	U/RU H x W x D
IP-A1377562-T33	24RU 1370H x 750W x 620D
IP-A1677562-T33	30RU 1675H x 750W x 620D
IP-A1977562-T33	36RU 1975H x 750W x 620D
IP-A2277562-T33	42RU 2275H x 750W x 620D



Infrastructure Field Cabinet - Accessories FC



IP Enclosures provide a range of standard accessories for infrastructure field cabinets including fixed shelves and sliding shelves.

Features & Specifications

Fixed Shelf Kits

Fixed shelf kits have many uses and can be used for component storage and battery storage. Shelves are ventilated. They are provided with fasteners and can be easily fitted without drilling.

Material: Galvanised steel sheet.

Surface Treatment: UL approved epoxy polyester powder coated with a textured finish. 80-120 micron average thickness.

Colour: RAL9016 (Traffic White)

Part Number: IP-FCSHL7562



Sliding Shelf Kits (Laptop Drawers)

Sliding shelf kits (Laptop drawer kits) are provided assembled complete with 4 screws for fast and easy fitting without drilling.

Material: Galvanised steel sheet.

Surface Treatment: UL approved epoxy polyester powder coated with a textured finish. 80-120 micron average thickness.

Colour: RAL9016 (Traffic White)

Part Number: IP-FCDRAWER



Wiring Plan Pockets

Wiring plan pockets and document storage pockets can be provided to fasten to the inside lower half of each access door to provide space for the storage of site documentation. Wiring plan pockets are sized to shroud unfolded, laminated A4 sized drawings and documents or folded A3.

Material: Galvanised steel sheet.

Surface Treatment: UL approved epoxy polyester powder coated with a smooth finish. 80-120 micron average thickness.

Colour: T33 Smoke Blue.

Part Number: IP-FCPPA3-T33



Transparent Isolation Cabinets

Steel | Powder Coated

ISO

TRANSPARENT | MULTI-ACCESS | IP55 to IP66



IP Enclosures range of transparent isolation cabinets are suitable for industrial applications where isolation or containment of hazardous processes are required.

Features & Specifications

IP Enclosures range of transparent isolation cabinets are suitable for industrial applications where isolation or containment of hazardous processes are required.

Protection: Complies with IP55 to IP66 IK10, NEMA 4

Standard: IEC62208, IEC/EN/AS60529

Material:

- Body: 1.2mm galvanised steel sheet
- Gland / Device Mounting Plate: 1.5mm galvanised steel sheet
- Door: 1.5mm galvanised steel sheet
- Seal: Polyurethane
- Windows: 4mm transparent tempered glass

Body: The robust monoblock body is fabricated using 1.2mm galvanised steel sheet. Flat face sealing surfaces are provided to increase seal life. M6 earth studs are provided. The floor gland plate is removable to enable cutting and fitting of equipment.

Base: The base is fabricated using 1.2mm galvanised steel sheet. The base is provided with four adjustable rubber mounting feet.

Front and Top Doors: The robust surface mounted doors are fabricated using 1.5mm galvanised steel sheet and incorporate concealed removable hinges with captive pins. The doors are designed for a 110° opening. Each door contains M6 earth studs. The top door is provided with gas struts and handle on larger sizes for ease of operation.

Seals: High quality machine-applied full perimeter Polyurethane foamed in place (FIP) seals provide excellent sealing over a long life. Temperature resistance -40°C to 80°C (160°C short term loading).

Locking Handles: Quarter turn cast alloy L handles coated black are provided.

Surface Treatment: UL approved epoxy polyester powder coated with a textured finish. 80-120 micron average thickness.

Part Number	Size
SKU	H x W x D
IP-ISO606060-WT	600H x 600W x 600D
IP-ISO608060-WT	600H x 800W x 600D
IP-ISO6010060-WT	600H x 1000W x 600D
IP-ISO6012060-WT	600H x 1200W x 600D
IP-ISO806060-WT	800H x 600W x 600D
IP-ISO808060-WT	800H x 800W x 600D
IP-ISO8010060-WT	800H x 1000W x 600D
IP-ISO8012060-WT	800H x 1200W x 600D

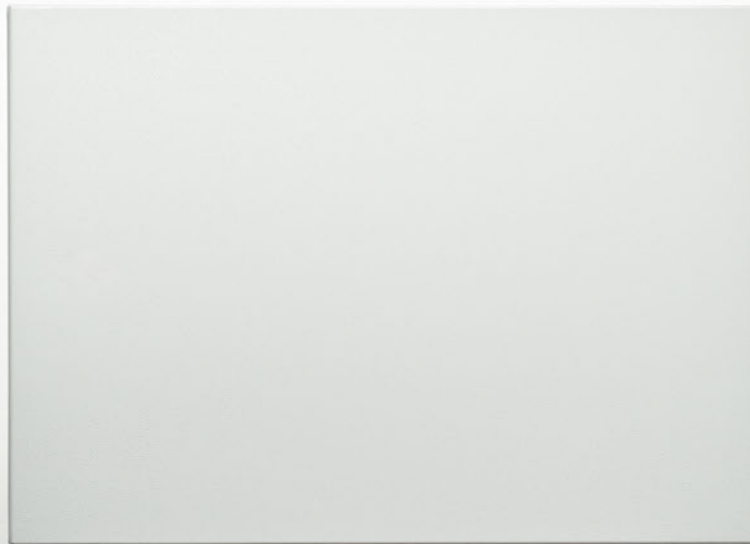


HMI Enclosures

Steel | Powder Coated

HMI

FRONT PANEL | REAR DOOR | IP66



The HMI range is an aesthetic and ergonomic control panel system. The simplified flat front panel is designed to mount operator interfaces. Access is via a lockable rear door incorporating a device mounting plate. HMI Enclosures are designed for use with IP Enclosures Support Arm Systems.

Features & Specifications

The IP Enclosures range of IP66 HMI Enclosures are an aesthetic and ergonomic control panel system. The simplified flat front panel is designed to mount operator interfaces. Access is via a lockable rear door. HMI Enclosures are designed for use with IP Enclosures Support Arm Systems.

Protection: Complies with IP66

Standard: AS/EN/IEC60529

Material:

- Enclosure Body: 2.0mm galvanised steel sheet
- Enclosure Door: Galvanised steel sheet
- Enclosure Front Panel: Galvanised steel sheet
- Enclosure Seal: Polyurethane

Body: The robust monoblock body is fabricated using 2.0mm galvanised steel sheet. Cutting, pressing and full continuous seam welding using precision automated manufacturing equipment ensures accuracy and consistent high quality. Flat face sealing surfaces are provided to increase seal life. M6 earth studs and equipment mounting studs are provided.

Door: The robust surface mounted door is fabricated using galvanised steel sheet and incorporates concealed removable hinges with captive pins. The door is designed for a 110° opening. The door contains an integral device mounting plate and a high quality machine-applied foamed in place (FIP) Polyurethane seal.

Front Panel: The front panel is fabricated using galvanised steel sheet. It is removable via internal fasteners to cut or machine holes to mount HMI's and operator devices. Sealing is achieved via a high quality machine-applied foamed in place (FIP) Polyurethane seal.

Seals: A high quality machine-applied full perimeter UL listed Polyurethane seal foamed in place (FIP) provides excellent sealing over a long life. Temperature resistance -40°C to 80°C (160°C short term loading).

Lock: Chrome 3mm double bit insert quarter turn lock with key.

Surface Treatment: UL approved epoxy polyester powder coated with a textured finish. 80-120 micron average thickness. (RAL7035 Standard)



Steel



Part Number	Size	SKU Suffix
SKU	H x W x D (mm)	Optional Colour
IP-HMI303015	300 H x 300 W x 150 D	-BLK -OR -RED
IP-HMI304015	300 H x 400 W x 150 D	-BLK -OR -RED
IP-HMI304025	300 H x 400 W x 250 D	-BLK -OR -RED
IP-HMI355015	350 H x 500 W x 150 D	-BLK -OR -RED
IP-HMI355025	350 H x 500 W x 250 D	-BLK -OR -RED
IP-HMI406015	400 H x 600 W x 150 D	-BLK -OR -RED
IP-HMI406025	400 H x 600 W x 250 D	-BLK -OR -RED

316 Stainless Steel

Part Number	Size
SKU	H x W x D (mm)
IP-SSHM303015	300 H x 300 W x 150 D
IP-SSHM304015	300 H x 400 W x 150 D
IP-SSHM304025	300 H x 400 W x 250 D
IP-SSHM355015	350 H x 500 W x 150 D
IP-SSHM355025	350 H x 500 W x 250 D
IP-SSHM406015	400 H x 600 W x 150 D
IP-SSHM406025	400 H x 600 W x 250 D

Accessories

Support Arm Systems



Support arm systems enable safe operator access to HMI's and enable strategic positioning of visual display outputs.

IP Enclosures provide support arm systems for HMI enclosures designed for ease of assembly and operator accessibility. Support arms enable safe operator access to HMI's and enable strategic positioning of visual display outputs.

IP-045 – Light Duty Support Arm System

Designed for light loads and short spans. It has a modular structure and modern design. Consists of a wide range of components for various configurations. It has a carrying capacity of 40kg for a 1m profile length.



IP-045-Length (mm)
45mm x 72mm Support Profile
(Various Lengths)



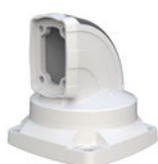
IP-045-800
Wall Socket



IP-045-420
90° Angle



IP-045-500
Rotating Intermediate Hinge



IP-045-600
Rotating Top Mounted 90°



IP-045-700
Rotating Wall-Mounted Horizontal



IP-045-400
Rotating Panel 90° Coupling



IP-045-830
Rotating Panel Adaptor Vertical

IP-060 – Medium Duty Support Arm System

Designed for medium loads and long spans. It has a modular structure and modern design. Consists of a wide range of components for various configurations. It has a carrying capacity of 60kg for a 1m profile length. It is suitable for VESA Mounting also known as VESA Mounting Interface Standard or Flat Display Mounting Interface (FDMI) for mounting monitors.



IP-060-Length (mm)
53mm x 85mm Support Profile
(Various Lengths)



IP-060-800
Wall Socket



IP-060-420
90° Angle



IP-060-500
Rotating Intermediate Hinge



IP-060-600
Rotating Top Mounted 90°



IP-060-710
Rotating Wall Mounted 90°



IP-060-700
Rotating Wall-Mounted Horizontal



IP-060-610
Rotating Top Mounted Vertical



IP-060-400
Rotating Panel 90° Coupling



IP-060-843
Tilting Enclosure Adaptor



IP-060-835
Tilting Enclosure Adaptor



IP-060-836
Tilting VESA Adaptor

Note: For details on the full range of profile and fittings, contact IP Enclosures.

Terminal Boxes

Steel | Powder Coated

TB

SCREWED LID | IMMERSIBLE | IP67



The IP Enclosures TB range of powder coated galvanised steel terminal boxes are designed to withstand immersion.

Features & Specifications

The IP Enclosures TB range of powder coated galvanised steel terminal boxes are designed to withstand immersion to 1.5m depth.

Protection: Complies with IP67 (Max. Depth 1.5m)

Standard: IEC/EN/AS60529 **CE**

Material:

- Housing: 1.5mm Galvanised Steel Sheet
- Lid/Door: 1.5mm Galvanised Steel Sheet
- Device Mounting Plate: 1.5mm Galvanised Steel Sheet
- Seal: EPDM

Housing: The robust housing is fabricated using galvanised steel sheet and incorporates a high quality EPDM seal. A device mounting plate is provided fitted. Integral mounting flanges with slotted mounting holes are incorporated for ease of installation.

Lid/Door: The robust screwed lid/door is fabricated using galvanised steel sheet and incorporates an earth stud.

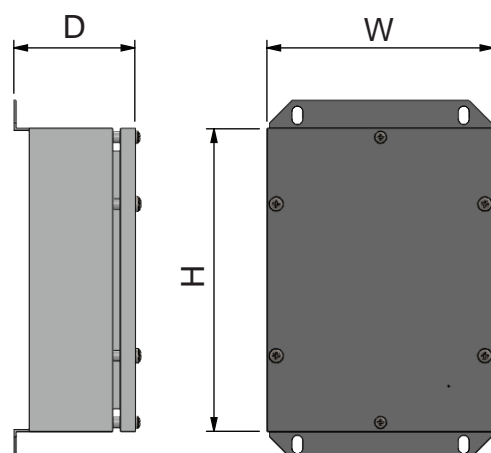
Seal: High quality full perimeter EPDM seal. Temperature resistance -35°C to 130°C. (RoHS & REACH compliant)

Device Mounting Plate: Fabricated using 1.5mm galvanised steel sheet, pressed to provide additional strength and supplied pre-fitted. DIN Rail sized to suit can be supplied as an optional accessory.

Surface Treatment: UL approved epoxy polyester powder coated with a textured finish. 80-120 micron average thickness. Standard Colour RAL7035 (Other colours available upon request. Refer to table)



Part Number	Size	Accessory - DIN Rail	Part Number Suffix
SKU	H x W x D (mm)	SKU	Optional Colours
IP-TB20208	200 x 200 x 80	IP-DINRAIL7.5X35-140	-T33 -BLK -OR -RED
IP-TB202012	200 x 200 x 120	IP-DINRAIL7.5X35-140	-T33 -BLK -OR -RED
IP-TB30158	300 x 150 x 80	IP-DINRAIL7.5X35-240	-T33 -BLK -OR -RED
IP-TB301512	300 x 150 x 120	IP-DINRAIL7.5X35-240	-T33 -BLK -OR -RED
IP-TB30208	300 x 200 x 80	IP-DINRAIL7.5X35-240	-T33 -BLK -OR -RED
IP-TB302012	300 x 200 x 120	IP-DINRAIL7.5X35-240	-T33 -BLK -OR -RED
IP-TB40208	400 x 200 x 80	IP-DINRAIL7.5X35-340	-T33 -BLK -OR -RED
IP-TB402012	400 x 200 x 120	IP-DINRAIL7.5X35-340	-T33 -BLK -OR -RED
IP-TB403012	400 x 300 x 120	IP-DINRAIL7.5X35-340	-T33 -BLK -OR -RED
IP-TB403015	400 x 300 x 150	IP-DINRAIL7.5X35-340	-T33 -BLK -OR -RED



Terminal Boxes

SSTB

Stainless Steel Grade 316/316L

SCREWED LID | IMMERSIBLE | IP67



The IP Enclosures SSTB range of grade 316/316L stainless steel terminal boxes are designed to withstand immersion.

Features & Specifications

The IP Enclosures SSTB range of grade 316/316L stainless steel terminal boxes are designed to withstand immersion to 1.5m depth.

Protection: Complies with IP67 (Max. Depth 1.5m)

Standard: IEC/EN/AS60529 

Material:

- Housing: 1.5mm Grade 316/316L Stainless Steel
- Lid/Door: 1.5mm Grade 316/316L Stainless Steel
- Device Mounting Plate: 1.5mm Galvanised Steel Sheet
- Seal: EPDM

Surface Finish: 0.4 micron Ra surface brushed finish

Housing: The robust housing is fabricated using 1.5mm Grade 316/316L Stainless Steel and incorporates a high quality EPDM seal. A device mounting plate is provided fitted. Integral mounting flanges with slotted mounting holes are incorporated for ease of installation.

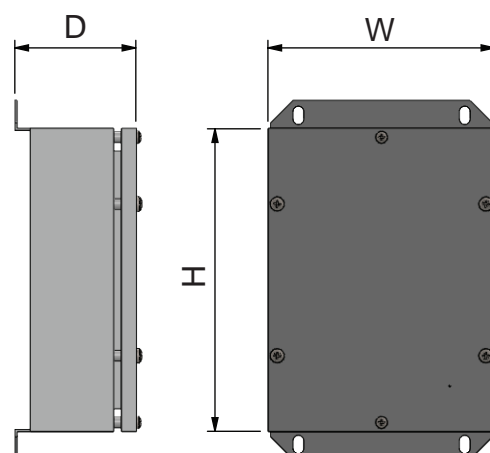
Lid/Door: The robust screwed lid/door is fabricated using 1.5mm Grade 316/316L Stainless Steel and incorporates an earth stud.

Seal: High quality full perimeter EPDM seal. Temperature resistance -35°C to 130°C. (RoHS & REACH compliant)

Device Mounting Plate: Fabricated using 1.5mm galvanised steel sheet, pressed to provide additional strength and supplied pre-fitted. DIN Rail sized to suit can be supplied as an optional accessory.



Part Number	Size	Accessory - DIN Rail
SKU	H x W x D (mm)	SKU
IP-SSTB20208	200 x 200 x 80	IP-DINRAIL7.5X35-140
IP-SSTB202012	200 x 200 x 120	IP-DINRAIL7.5X35-140
IP-SSTB30158	300 x 150 x 80	IP-DINRAIL7.5X35-240
IP-SSTB301512	300 x 150 x 120	IP-DINRAIL7.5X35-240
IP-SSTB30208	300 x 200 x 80	IP-DINRAIL7.5X35-240
IP-SSTB302012	300 x 200 x 120	IP-DINRAIL7.5X35-240
IP-SSTB40208	400 x 200 x 80	IP-DINRAIL7.5X35-340
IP-SSTB402012	400 x 200 x 120	IP-DINRAIL7.5X35-340
IP-SSTB403012	400 x 300 x 120	IP-DINRAIL7.5X35-340
IP-SSTB403015	400 x 300 x 150	IP-DINRAIL7.5X35-340



Pushbutton Enclosures

SSPB

Stainless Steel Grade 316/316L

FLAT ROOF and SLOPING ROOF | IP66 | 22mm Hole



Features & Specifications

IP Enclosures SSPB range of grade 316/316L stainless steel pushbutton enclosures are suitable for extreme duty heavy industrial applications. They are available in 1 hole, 2 hole, 3 hole, 4 hole and 6 hole configurations with a flat roof or a sloping roof.

Protection: Complies with IP66

Standard: IEC/EN/AS60529 

Material:

- Body: 1.5mm Grade 316/316L Stainless Steel
- Door: 1.5mm Grade 316/316L Stainless Steel
- Seal: Polyurethane. UL listed.

Surface Finish: 0.4 micron Ra surface brushed finish

Body: The robust monoblock body is fabricated using 1.5mm Grade 316/316L Stainless Steel. Flat face sealing surfaces are provided to increase seal life. Integral mounting flanges with slotted mounting holes are incorporated for ease of installation.

Lid/Door: The robust screwed lid/door is fabricated using 1.5mm Grade 316/316L Stainless Steel and incorporates a high quality machine-applied foamed in place (FIP) Polyurethane seal.

Seal: A high quality machine-applied full perimeter UL listed Polyurethane seal foamed in place (FIP) provides excellent sealing over a long life. Temperature resistance -40°C to 80°C (160°C short term loading).



FLAT ROOF

Part Number	Description
Standard	Number of 22mm Holes
IP-SSPB1	1 Hole
IP-SSPB2	2 Hole
IP-SSPB3	3 Hole
IP-SSPB4	4 Hole
IP-SSPB6	6 Hole (2 Columns of 3)



SLOPING ROOF

Part Number	Description
Standard	Number of 22mm Holes
IP-SSSRPB1	1 Hole
IP-SSSRPB2	2 Hole
IP-SSSRPB3	3 Hole
IP-SSSRPB4	4 Hole
IP-SSSRPB6	6 Hole (2 Columns of 3)



Thermal Control - Ventilation

IP-V

Filter Vents & Fans

12VDC to 230VAC | 26m³/h to 700m³/h | IP54 (IP55 with Vent Hood)



IP Enclosures range of filter fans and vents feature a modern Italian grille design with minimal external projection. The front-opening grille allows filters to be easily maintained from the outside of the enclosure.

Features & Specifications

IP Enclosures provide a wide range of ventilation products for electrical enclosures. The front-opening grille allows filters to be easily maintained from the outside of the enclosure. All molded parts are made of highly resistant and self-extinguishing ABS. IP Enclosures ventilation products are manufactured to the highest quality in Italy.

Protection: Complies with IP54 (or IP55 if used with Vent Hood)

Conformity: 

Material: ABS UL94V-0 color RAL7035

Flow Direction: Reversible

FEATURES

Modern Design: A positive visual impact is provided by the modern grille design and minimal external projection. All molded parts are made of highly resistant and self-extinguishing ABS, UL94 VO grade. The standard color is RAL7035.

Easy Maintenance: Filter mats can be easily maintained from outside of the enclosure due to the front-opening grille. Replacement of soiled filter mats takes only a few seconds without the use of tools.

Wide Range of Air Flow Ratings: 26m³/h to 700m³/h

Optimal Enclosure Protection: The special configuration of the grille, foam seal gasket and filter mat ensures an IP54 protection of the enclosure.

Quick Electrical Connection: Fitted with spring terminals for faster and safer wiring. Default terminal position is above the fan but can be easily changed to bottom of fan to suit wiring needs without tools.

Reversible Fan: Default air flow direction is from outside to inside of the enclosure. If required, air flow can be reversed due to quick release fan lock system without the use of tools.

Fast Installation: Installation is fast due to the simple square cutout on the enclosure and the snap-in fixing system. No fasteners are required.

Vent Hoods: To obtain IP55 protection, use in conjunction with IP Enclosures vent hoods. Hinged vent hoods are available to provide operator access to easily maintain filters from the outside of the enclosure.



Easy Maintenance due to Front Opening Grille



Step 1: Open Grille



Step 2: Remove Filter



Step 3: Insert Filter



Step 4: Close Grille

114mm x 114mm 26m3/hr		Vent	230V Fan	115V Fan	12VDC Fan	24VDC Fan
Part Number	SKU	IP-V1000	IP-V1100	IP-V1101	IP-V1112	IP-V1124
Air flow rate (free blow)	m3/h	-	26 (30)		26	
Air flow rate with exit filter	m3/h	-	15 (18)		15	
Power supply	V/Hz	-	230 / 50-60	115 / 50-60	12DC	24DC
Dimensions HxWxD	mm	114x114x27	114x114x73		114x114x60	
Power consumption	W	-	13 (12)		3	4
Current consumption	A	-	0.10 (0.08)	0.14 (0.12)	0.25	0.16
Overcurrent protection	-	-	impedance			
Electrical connection	-	-	3-poles spring terminals *		2-poles spring terminals *	
Duty cycle	-	-	100%			
Operating temperature	°C (°F)	-10 / +70 (+14/+158)				
Protection degree / Class	-	IP54	IP54 / Class I			
Noise level	dB(A)	-	30 (35)		35	
Flow direction	-	-	reversible, default factory setting outside-in			
Bearing	-	-	ball			
Filter mat EN779	-	G2	G2			
Cut-out Dimensions	mm	92x92	92x92			
Material	-	ABS UL94V-0 color RAL7035				

150mm x 150mm 58m3/hr		Vent	230V Fan	115V Fan	24VDC Fan	48VDC Fan
Part Number	SKU	IP-V2000	IP-V2200	IP-V2201	IP-V2224	IP-V2248
Air flow rate (free blow)	m3/h	-	58(64)		58	
Air flow rate with exit filter	m3/h	-	43(48)		43	
Power supply	V/Hz	-	230 / 50-60	115 / 50-60	24DC	48DC
Dimensions HxWxD	mm	150x150x37	150x150x86			
Power consumption	W	-	22 (21)		9	13
Current consumption	A	-	0.14 (0.12)	0.26 (0.24)	0.37	0.27
Overcurrent protection	-	-	impedance			
Electrical connection	-	-	3-poles spring terminals *		2-poles spring terminals *	
Duty cycle	-	-	100%			
Operating temperature	°C (°F)	-10 / +70 (+14/+158)				
Protection degree / Class	-	IP54	IP54 / Class I			
Noise level	dB(A)	-	43(49)		45	
Flow direction	-	-	reversible, default factory setting outside-in			
Bearing	-	-	ball			
Filter mat EN779	-	G3	G3			
Cut-out Dimensions	mm	124x124	124x124			
Material	-	ABS UL94V-0 color RAL7035				

204mm x 204mm 115m3/hr		Vent	230V Fan	115V Fan	24VDC Fan	48VDC Fan
Part Number	SKU	IP-V3000	IP-V3200	IP-V3201	IP-V3224	IP-V3248
Air flow rate (free blow)	m3/h	-	115 (125)		115	
Air flow rate with exit filter	m3/h	-	84 (97)		84	
Power supply	V/Hz	-	230 / 50-60	115 / 50-60	24DC	48DC
Dimensions HxWxD	mm	204x204x37	204x204x104			
Power consumption	W	-	22 (21)		9	13
Current consumption	A	-	0.14 (0.12)	0.26 (0.24)	0.37	0.27
Overcurrent protection	-	-	impedance			
Electrical connection	-	-	3-poles spring terminals *		2-poles spring terminals *	
Duty cycle	-	-	100%			
Operating temperature	°C (°F)	-10 / +70 (+14/+158)				
Protection degree / Class	-	IP54	IP54 / Class I			
Noise level	dB(A)	-	43 (49)		45	
Flow direction	-	-	reversible, default factory setting outside-in			
Bearing	-	-	ball			
Filter mat EN779	-	G3	G3			
Cut-out Dimensions	mm	177x177	177x177			
Material	-	ABS UL94V-0 color RAL7035				

250mm x 250mm 125m3/hr		Vent	230V Fan	115V Fan	24VDC Fan	48VDC Fan
Part Number	SKU	IP-V4000	IP-V4200	IP-V4201	IP-V4224	IP-V4248
Air flow rate (free blow)	m3/h	-	125 (135)		125	
Air flow rate with exit filter	m3/h	-	102 (112)		102	
Power supply	V/Hz	-	230 / 50-60	115 / 50-60	24DC	48DC
Dimensions HxWxD	mm	250x250x38	250x250x107			
Power consumption	W	-	22 (21)		9	13
Current consumption	A	-	0.14 (0.12)	0.26 (0.24)	0.37	0.27
Overcurrent protection	-	-	impedance			
Electrical connection	-	-	3-poles spring terminals *		2-poles spring terminals *	
Duty cycle	-	-	100%			
Operating temperature	°C (°F)	-10 / +70 (+14/+158)				
Protection degree / Class	-	IP54	IP54 / Class I			
Noise level	dB(A)	-	43 (49)		45	
Flow direction	-	-	reversible, default factory setting outside-in			
Bearing	-	-	ball			
Filter mat EN779	-	G3	G3			
Cut-out Dimensions	mm	224x224	224x224			
Material	-	ABS UL94V-0 color RAL7035				

250mm x 250mm 255m3/hr to 410m3/hr			230V	115V	24VDC	48VDC	230V	115V	400V
Part Number	SKU	IP-V4000	IP-V4300	IP-V4301	IP-V4324	IP-V4348	IP-V4400	IP-V4401	IP-V4440
Air flow rate (free blow)	m3/h	-	255 (290)		255		410 (445)		
Air flow rate with exit filter	m3/h	-	202 (235)		202		280 (302)		
Power supply	V/Hz	-	230 / 50-60	115 / 50-60	24DC	48DC	230 / 50-60	115 / 50-60	400 / 50-60
Dimensions HxWxD	mm	250x250x38	250x250x128				250x250x136		
Power consumption	W	-	40 (38)		26	33	70 (90)		60 (70)
Current consumption	A	-	0.17 (0.16)	0.34 (0.32)	1.08	0.68	0.40 (0.38)	0.80 (0.76)	0.18 (0.15)
Overcurrent protection	-	-	thermal		impedance		thermal		
Electrical connection	-	-	3-poles spring terminals *		2-poles spring terminals *		3-poles spring terminals *		4-p s t*
Duty cycle	-	-	100%						
Operating temperature	°C (°F)	-10 / +70 (+14/+158)							
Protection degree / Class	-	IP54	IP54 / Class I						
Noise level	dB(A)	-	53 (58)		61		65 (68)		
Flow direction	-	-	reversible, default factory setting outside-in						
Bearing	-	-	ball						
Filter mat EN779	-	G3	G3						
Cut-out Dimensions	mm	224x224	224x224						
Material	-	ABS UL94V-0 color RAL7035							

325mm x 325mm 550m3/hr - 700m3/hr			230V Fan	115V Fan	400V Fan	230V Fan	115V Fan
Part Number	SKU	IP-V5000	IP-V5400	IP-V5401	IP-V5440	IP-V5500	IP-V5501
Air flow rate (free blow)	m3/h	-	550 (620)			700 (770)	
Air flow rate with exit filter	m3/h	-	405 (450)			520 (575)	
Power supply	V/Hz	-	230 / 50-60	115 / 50-60	400 / 50-60	230 / 50-60	115 / 50-60
Dimensions HxWxD	mm	325x325x42	325x325x140			325x325x154	
Power consumption	W	-	70 (90)		60 (70)	130 (180)	
Current consumption	A	-	0.40 (0.38)	0.80 (0.76)	0.18 (0.15)	0.55 (0.81)	1.10 (1.62)
Overcurrent protection	-	-	thermal				
Electrical connection	-	-	3-poles spring terminals *		4-p s t *	3-poles spring terminals *	
Duty cycle	-	-	100%				
Operating temperature	°C (°F)	-10 / +70 (+14/+158)					
Protection degree / Class	-	IP54	IP54 / Class I				
Noise level	dB(A)	-	65 (68)			72 (73)	
Flow direction	-	-	reversible, default factory setting outside-in				
Bearing	-	-	ball				
Filter mat EN779	-	G3	G3				
Cut-out Dimensions	mm	291x291	291x291				
Material	-	ABS UL94V-0 color RAL7035					

Thermal Control - Ventilation

IP-RV/RFV

Roof Vents & Roof Fans

230VAC | 600m³/h to 1000m³/h | IP44



IP Enclosures provide a wide range of roof mounted ventilation products for electrical cabinets.

Features & Specifications

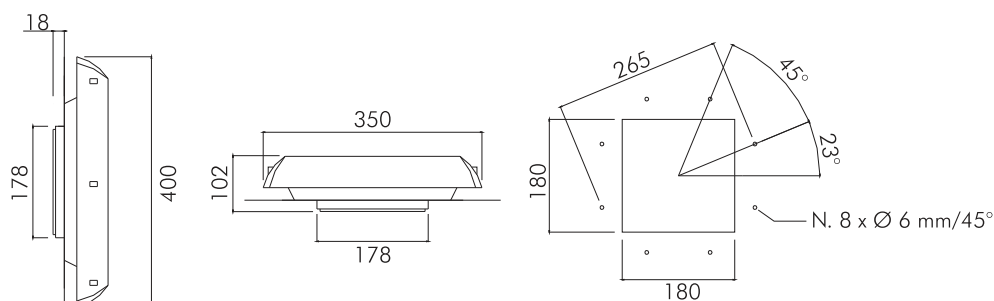
IP-RV/RFV

IP Enclosures provide a wide range of ventilation products for electrical enclosures. All molded parts are made of highly resistant and self-extinguishing ABS. IP Enclosures ventilation products are manufactured to the highest quality in Italy.

Protection: Complies with IP44

Conformity: 

Material: ABS UL94V-0 color RAL7035



	Roof Vent		600m3 Fan		860m3 Fan		1000m3 Fan	
Features	Unit	IP-RV1	IP-RFV1	IP-RFV1-115	IP-RFV2	IP-RFV2-115	IP-RFV3	IP-RFV3-115
Air flow rate (free blow)	m³/h	-	600(625)		860(950)		1000(1050)	
Flow rate with inlet filter	m³/h	-	430(450)		580(640)		700(720)	
Power supply	V/Hz	-	230/50-60	115/50-60	230/50-60	115/50-60	230/50-60	115/50-60
Dimensions HxWxD	mm	400x350x102	400x350x102					
Power consumption	W	-	70(90)		85(115)		120(170)	
Current consumption	A	-	0.32(0.40)	0.64(0.80)	0.43(0.50)	0.86(1.00)	0.50(0.75)	1.00(1.50)
Overcurrent protection	-	-	thermal					
Electric connection	-	-	4-pole terminal 2.5 mm²					
Duty cycle	-	-	100%					
Operating temperature	°Q(°F)	-10/+70 (+14/+158)						
Protection degree enclosure side	-	IP44						
Protection class	-	-	Class I					
Noise level	dB(A)	-	64(65)		72(73)			
Flow direction	-	-	inside-out					
Bearing	-	-	ball					
Service life (at 40°C)	hr	-	50 000					
Material	-	ABS UL94V-0 Color RAL7035						
Gasket	-	self-adhesive						
Weight (with packaging)	kg	2.30(2.50)	3.65(3.85)		4.00(4.20)		4.75(4.95)	
Package dimensions	mm	410x360x130						
Mounting	-	Screws						
Conformity/ Certifications	-	CE						

Louvre Vents, Vent Hoods & Sun Shields



IP Enclosures vent hoods assist to protect internal components by increasing the protection of fans and vents to IP55. Hinged vent hoods are also available to enable easy access to fans and filters for filter maintenance without the need to open the enclosure.

Louvre Vents

STEEL



STAINLESS STEEL

Part Number	Size	Part Number Suffix	Part Number	Size
Standard	H x W (mm)	Optional Colours	Standard	H x W (mm)
IP-PSLV10075	100 x 75	-T33 -BLK -OR -RED	IP-SSLV10075	100 x 75
IP-PSLV130130	130 x 130	-T33 -BLK -OR -RED	IP-SSLV130130	130 x 130



Vent Hoods (Standard)

STEEL



STAINLESS STEEL

Part Number	Size	Part Number Suffix	Part Number	Size
Standard	H x W x D (mm)	Optional Colours	Standard	H x W x D (mm)
IP-PSVH3020	300 x 200 x 50	-T33 -BLK -OR -RED	IP-SSVH3020	300 x 200 x 50
IP-PSVH3222	320 x 220 x 50	-T33 -BLK -OR -RED	IP-SSVH3222	320 x 220 x 50
IP-PSVH4030	400 x 300 x 50	-T33 -BLK -OR -RED	IP-SSVH4030	400 x 300 x 50
IP-PSVH4737	475 x 375 x 75	-T33 -BLK -OR -RED	IP-SSVH4737	475 x 375 x 75
IP-PSVH5040	500 x 400 x 75	-T33 -BLK -OR -RED	IP-SSVH5040	500 x 400 x 75



Hinged Vent Hoods (For use with filter fans/vents)

STEEL



STAINLESS STEEL

Part Number	Size	Part Number Suffix	Part Number	Size
Standard	H x W x D (mm)	Optional Colours	Standard	H x W x D (mm)
IP-PSVH3020-H	300 x 200 x 50	-T33 -BLK -OR -RED	IP-SSVH3020-H	300 x 200 x 50
IP-PSVH3222-H	320 x 220 x 50	-T33 -BLK -OR -RED	IP-SSVH3222-H	320 x 220 x 50
IP-PSVH4030-H	400 x 300 x 50	-T33 -BLK -OR -RED	IP-SSVH4030-H	400 x 300 x 50
IP-PSVH4737-H	475 x 375 x 75	-T33 -BLK -OR -RED	IP-SSVH4737-H	475 x 375 x 75
IP-PSVH5040-H	500 x 400 x 75	-T33 -BLK -OR -RED	IP-SSVH5040-H	500 x 400 x 75



Sun Shields

STEEL



STAINLESS STEEL

Part Number	Size	Part Number Suffix	Part Number	Size
Standard	H x W x D (mm)	Optional Colours	Standard	H x W x D (mm)
IP-SUN504020	500 x 400 x 200	-T33 -BLK -OR -RED	IP-SUNSS504020	500 x 400 x 200
IP-SUN606030	600 x 600 x 300	-T33 -BLK -OR -RED	IP-SUNSS606030	600 x 600 x 300
IP-SUN806030	800 x 600 x 300	-T33 -BLK -OR -RED	IP-SUNSS806030	800 x 600 x 300



Thermal Control - Heating

Anti-Condensation Heaters

IP-H

Compact, Touch Shield & Fan-Assisted | 75W to 750W




Anti-condensation heaters are required to prevent failures or corrosion caused by low temperatures or high humidity. IP Enclosures heating products are manufactured to the highest quality in Italy.

Anti-Condensation Heaters for Electrical Enclosures

IP-H

IP Enclosures provide a range of heating products for electrical enclosures. Our range of heating products are manufactured to the highest quality in Italy.


Compact | 75W to 150W

FEATURES	UNIT	IP-H75	IP-H100	IP-H150
Heating Capacity*	W	75	100	150
Power supply	V	120-240V AC or DC		
Inrush current	A	4	5	9.5
Delayed fuse (advised)	A	6.3	8	10
Heating element type	-	PTC resistor, self regulating		
Electrical connections	-	2 screw terminals for stranded or rigid wire 2.5 mm²		
Protection class	-	Class II		
Protection degree EN60529	-	IP20		
Operating temperature	°C (°F)	-45/+70 (-49/+158)		
Storage temperature	°C (°F)	-45/+80 (-49/+176)		
Radiator	-	Extruded aluminium profile		
Mounting	-	Clip for mounting on DIN rail 35 mm EN50022		
Installation position	-	Best efficiency in vertical position		
Dimensions HxWxD	mm	140x59x61	220x59x61	
Weight (with packaging)	kg	0.34 (0.38)	0.57 (0.62)	
Conformity/ Certifications	-	CE - UL 		

*at 20°C (68°F) ambient temperature




Touch Shield | 25W to 150W

FEATURES	UNIT	IP-TSH25	IP-TSH50	IP-TSH75	IP-TSH100	IP-TSH150
Heating Capacity*	W	25	50	75	100	150
Power supply	V	120-240V AC or DC				
Inrush current	A	2.5	3.5	4	5	9.5
Delayed fuse (advised)	A	4	4	6.3	8	10
Heating element type	-	PTCresistor, self regulating				
Electrical connections	-	2 screw terminals for stranded or rigid wire 2.5 mm²				
Protection class	-	Class II				
Protection degree EN60529	-	IP20				
Operating temperature	°C (°F)	-45/+70 (-49/+158)				
Storage temperature	°C (°F)	-45/+80 (-49/+176)				
Radiator	-	Extruded aluminium profile, with plastic cover				
Mounting	-	Clip for mounting on DIN rail 35 mm EN50022				
Installation position	-	Best efficiency in vertical position				
Dimensions HxWxD	mm	125x41x41		140x63x70		220x63x70
Weight (with packaging)	kg	0.16 (0.19)		0.42 (0.46)		0.66 (0.72)
Conformity/ Certifications	-	CE - UL 				

*at 20°C (68°F) ambient temperature



Fan Assisted | 250W to 750W

FEATURES	UNIT	IP-FH250	IP-FH251	IP-FH400	IP-FH401	IP-FH500	IP-FH501	IP-FH750	IP-FH751
Heating Capacity	W	250	250	400	400	500	500	750	750
Power supply	V/Hz	230/50-60	115/50-60	230/50-60	115/50-60	230/50-60	115/50-60	230/50-60	115/50-60
Max. current	A	1.2	2.4	1.9	3.8	2.4	4.8	3.6	7.2
Heating element type	-	Resistor							
Thermal protection	-	Thermal cut out fuse in case of fan failure							
Radiator	-	Extruded aluminium profile, anodized							
Axial fan	-	Ball bearing, service life 50.000 hrs at 25°C (77°F) air flow rate 35 m³/h, free flow							
Signalling	-	Green LED power ON							
Electrical connections	-	3 screw terminals for stranded or rigid wire 2.5 mm²							
Protection class	-	Class I, earthed							
Protection degree EN60529	-	IP20							
Operating temperature	°C (°F)	-25/+70 (-13/+158)							
Storage temperature	°C (°F)	-45/+80 (-49/+176)							
Mounting	-	Clip for mounting on DIN rail 35 mm EN50022							
Installation position	-	Best efficiency in vertical position							
Dimensions HxWxD	mm	135x112x82	135x112x82	165x112x82	165x112x82	165x112x82	165x112x82	225x112x82	225x112x82
Weight (with packaging)	kg	0.88(0.94)	0.88(0.94)	0.97(1.04)	0.97(1.04)	0.97(1.04)	0.97(1.04)	1.35(1.42)	1.35(1.42)
Conformity/Certifications	-	CE - UL 							



Thermal Control - Cooling

Air Conditioners

IP-AC

350W to 2kW | Indoor & Outdoor



IP Enclosures air conditioners are made in Italy and are designed for the cooling needs of electrical cabinets. They are optimised for door or side-panel mounting and have been designed for high efficiency and low maintenance.

350W Wall Mounted Air Conditioner		INDOOR (Mechanical Thermostat)	INDOOR (Digital Thermostat)	OUTDOOR
Part Number	SKU	IP-ACIWM035	IP-ACIWM035.001	IP-ACOWM035
Power supply	V/Hz	230V/ 1ph/ 50-60		
Dimensions HxWxD	mm	430x280x170		
Cooling capacity A35A35	W	350/370		
Cooling capacity A35A50	W	200/220		
Max current	A	1.5		
Delayed fuse	A	4		
Absorbed electric power A35A35	W	290/320		
Absorbed electric power A35A50	W	320/350		
Refrigerant	-	R134a		
Operating temperature (ambient)	°C (°F)	+ 20/+ 55 (+ 68/+ 131)		
Operating temperature (enclosure)	°C (°F)	+ 20/+ 45 (+ 69/+ 113)		

850W Wall Mounted Air Conditioner		INDOOR (Mechanical Thermostat)	INDOOR (Digital Thermostat)	OUTDOOR
Part Number	SKU	IP-ACIWM085	IP-ACIWM085.001	IP-ACOWM085
Power supply	V/Hz	230V/ 1ph/ 50-60		
Dimensions HxWxD	mm	635x305x210		
Cooling capacity A35A35	W	850/900		
Cooling capacity A35A50	W	625/650		
Max current	A	2.65		
Delayed fuse	A	6		
Absorbed electric power A35A35	W	490/530		
Absorbed electric power A35A50	W	600/640		
Refrigerant	-	R134a		
Operating temperature (ambient)	°C (°F)	+ 20/+ 55 (+ 68/+ 131)		
Operating temperature (enclosure)	°C (°F)	+ 20/+ 45 (+ 68/+ 113)		

1450W Wall Mounted Air Conditioner		INDOOR (Mechanical Thermostat)	INDOOR (Digital Thermostat)	OUTDOOR
Part Number	SKU	IP-ACIWM145	IP-ACIWM145.001	IP-ACOWM145
Power supply	V/Hz	230V/ 1ph/ 50-60		
Dimensions HxWxD	mm	800x400x240		
Cooling capacity A35A35	W	1450/1500		
Cooling capacity A35A50	W	1150/1200		
Max current	A	3.7		
Delayed fuse	A	6		
Absorbed electric power A35A35	W	600/630		
Absorbed electric power A35A50	W	710/760		
Refrigerant	-	R134a		
Operating temperature (ambient)	°C (°F)	+ 20/+ 55 (+ 68/+ 131)		
Operating temperature (enclosure)	°C (°F)	+ 20/+ 45 (+ 68/+ 113)		

2000W Wall Mounted Air Conditioner		INDOOR (Mechanical Thermostat)	INDOOR (Digital Thermostat)	OUTDOOR
Part Number	SKU	IP-ACIWM200	IP-ACIWM200.001	IP-ACOWM200
Power supply	V/Hz	230V/ 1ph/ 50-60		
Dimensions HxWxD	mm	1000x400x240		
Cooling capacity A35A35	W	2000/2100		
Cooling capacity A35A50	W	1200/1250		
Max current	A	6.6		
Delayed fuse	A	10		
Absorbed electric power A35A35	W	1060/1100		
Absorbed electric power A35A50	W	1240/1300		
Refrigerant	-	R134a		
Operating temperature (ambient)	°C (°F)	+ 20/+ 55 (+ 68/+ 131)		
Operating temperature (enclosure)	°C (°F)	+ 20/+ 45 (+ 68/+ 113)		

Note: Roof mounted air conditioners are also available upon request.

Thermal Control - Controllers

Thermostats, Hygrostat & Fan Speed Controller

IP Enclosures thermal control products are manufactured to the highest quality in Italy and are suitable for use with IP Enclosures range of heating and cooling products.

Single Thermostats | NC/NO

Features	Unit	IP-THNC1	IP-THNC2	IP-THNC3	IP-THNO1	IP-THNO2	IP-THNO3
Contact function	-	NC	NC	NC	NO	NO	NO
Temperature setting range	°C	-10/+50	0/+60	+20/+80	-10/+50	0/+60	+20/+80
Precision	°C	±4					
Hysteresis	°C	7					
Max switching current							
250Vac resistive load (inductive load)	A	10 (1.6)					
125Vac resistive load (inductive load)	A	15 (2.5)					
Max. switching power in Vdc	W	30					
Temperature sensor type	-	Thermostatic bimetal					
Contact type	-	Snap action					
Contact resistance	mOhm	< 10					
Service life	cycles	> 100 000					
Electrical connections	-	2-pole terminal for 2.5 mm² wire					
Casing	-	PA6, UL94 V0 self-extinguishing, light grey RAL 7035					
Protection degree EN60529	-	IP20					
Operating temperature	°C (°F)	-25/+80 (-13/+176)					
Storage temperature	°C (°F)	-45/+80 (-49/+176)					
Mounting	-	Clip for mounting on DIN rail 35 mm EN50022					
Installation position	-	Variable					
Conformity/Certifications	-	CE-UL _{us}					
Dimensions HxWxD	mm	61x34x35					



Double Thermostats | NC/NO

Features	Unit	IP-THD1		IP-THD2		IP-THD3	
Contact function	-	NC	NO	NC	NO	NO	NO
Temperature setting range	°C	-10/+50	+20/+80	0/+60	0/+60	0/+60	0/+60
Precision	°C	±4					
Hysteresis	°C	7					
Max switching current							
250Vac resistive load (inductive load)	A	10 (1.6)					
125Vac resistive load (inductive load)	A	15 (2.5)					
Max. switching power in Vdc	W	30					
Temperature sensor type	-	Thermostatic bimetal					
Contact type	-	Snap action					
Contact resistance	mOhm	< 10					
Service life	cycles	> 100 000					
Electrical connections	-	2-pole terminal for 2.5 mm² wire					
Casing	-	PA6, UL94 V0 self-extinguishing, light grey RAL 7035					
Protection degree EN60529	-	IP20					
Operating temperature	°C (°F)	-25/+80 (-13/+176)					
Storage temperature	°C (°F)	-45/+80 (-49/+176)					
Mounting	-	Clip for mounting on DIN rail 35 mm EN50022					
Installation position	-	Variable					
Conformity/Certifications	-	CE-UL _{us} File n. E348803					
Dimensions HxWxD	mm	61x53x35					



Mechanical Hygrostat

Features	Unit	IP-MH1
Relative Humidity setting range	RH%	20-90
Relative Humidity Hysteresis	RH%	5 (max 10)
Precision	RH%	±4
Operating temperature	°C (°F)	-10/+50 (+14/+122)

Fan Speed Controller (Image not shown)

Features	Unit	FSC
Power supply	V/Hz	100-230/50-60
Temperature setting range	°C	+20 / +60
Fan speed setting range	%	0 - 100
Speed controller	-	partialization of wave
Input	-	NTC sensor
Max. output fan	-	300 W (100-230/50-60Hz)
Electrical connection	-	terminal for 2.5 mm² wire
Optical signal	-	LED
Casing	-	PA6, UL94 V0 self-extinguishing, light grey RAL 7035
Protection degree EN60529	-	IP20



Accessories

LED Lighting Solutions


24-48VDC to 240VAC

IP Enclosures provide high quality LED lighting solutions that have been specifically designed for electrical enclosures.

Features:

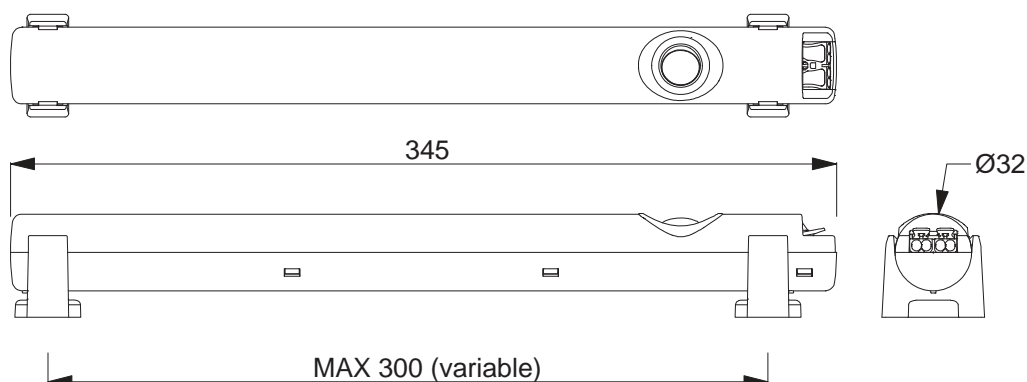
- High efficiency LED lamps for enclosures.
- Designed to suit a wide voltage range from 24VDC to 240VAC in a single model.
- Spring terminal connections.
- Easy to install.
- Provided with integral on-off switch or motion sensor.
- Screw-type mounting for stainless steel or magnet mounting for steel enclosures.



Features	Unit	IP-LEDLAMP320	IP-LEDLAMP3201	IP-LEDLAMP3210	IP-LEDLAMP3211
Power supply	V/Hz	24-48 VDC / 100-240 VAC 50-60 Hz			
Luminosity	Lm	400			
Lamp type	-	LED			
Power consumption	W	2,5			
Service life (@ 20°C)	hr	60 000			
Switch	-	on/off switch		Motion sensor*	
Electrical connection	-	2-poles spring terminals **			
Casing	-	Plastic			
Protection degree / Class	-	IP20 / Class II			
Operating temperature	°C (°F)	-30 / +60 (-22 / +140)			
Storage temperature	°C (°F)	-40 / +85 (-40 / +185)			
Mounting	-	screw fixing	magnet fixing	screw fixing	magnet fixing
Installation position	-	Variable			
Dimensions	mm	Ø32x345			
Weight (with packaging)	kg	0.155 (0.205)	0.175 (0.225)	0.155 (0.205)	0.175 (0.225)
Package dimensions	mm	415x50x43			
Conformity/Certifications	-	CE, 			

* 5min switched on after last detection

** 0.5-2.5mm



Accessories

Locking & Security Solutions

Our electrical enclosures are supplied fitted with standard locks. However, to provide maximum flexibility, IP Enclosures also provide a full range of electrical enclosure locks, handles and security solutions.



Quarter Turn

IP-L001 - 3mm Double Bit Chrome
IP-L002 - 8mm Square Chrome
IP-L026 - 3mm Double Bit Stainless Steel
IP-L027 - 8mm Square Stainless Steel



Compression

IP-L058 - 316 Stainless Steel



IP69K Hygiene

IP-L030 - 316 Stainless Steel



IP69K Hygiene Compression

IP-059 - 316 Stainless Steel



Keys

IP-L004 - 3mm Double Bit Chrome
IP-L005 - 8mm Square Chrome



Wing Knob

IP-L060 - Cast Alloy Coated Black
IP-L029 - 316 Stainless Steel



Wing Knob Keyed

IP-L045 - Cast Alloy Coated Black
IP-L028 - 316 Stainless Steel



Wing Knob Padlockable

IP-L043 - Cast Alloy Coated Black
IP-L031 - 316 Stainless Steel



T Handle

IP-L044 - Cast Alloy Chrome
IP-L061 - Cast Alloy Coated Black
IP-L052 - 316 Stainless Steel



T Handle Keyed

IP-L048 - Cast Alloy Chrome
IP-L049 - Cast Alloy Coated Black
IP-L053 - 316 Stainless Steel



L Handle

IP-L054 - Cast Alloy Chrome
IP-L055 - Cast Alloy Coated Black
IP-L056 - 316 Stainless Steel



L Handle Keyed

IP-L057 - Cast Alloy Chrome
IP-L062 - Cast Alloy Coated Black
IP-L063 - 316 Stainless Steel



Handle

IP-L064 - Cast Alloy Coated Black



Handle

IP-L065 - Aluminium



Door Stays

IP-L067 - Zinc Plated Steel
IP-L068 - Stainless Steel



Electro-Mechanical

Access Control via RFID, keypad or remote control. Upon request.

www.ipenclosures.com



3 Point Wing Knob Keyed
IP-L069 - Cast Alloy Coated Black



3 Point T Handle Keyed
IP-L070 - Cast Alloy Coated Black



3 Point L Handle
IP-L071 - Cast Alloy Coated Black



Linear Handle
IP-L072 - Cast Alloy Coated Black



Swing Handle
IP-L006 - Polyamide Coated Black
IP-L007 - Polyamide & Cast Alloy Coated Black



Swing Handle Padlockable
IP-L009 - Polyamide & Cast Alloy Coated Black



3 Point Swing Handle*
IP-L011 - Polyamide Coated Black
IP-L012 - Polyamide & Cast Alloy Coated Black
IP-L036 - with 3mm Double Bit Barrel



3 Point Swing Handle Padlockable*
IP-L014 - Polyamide & Cast Alloy Coated Black



Swing Handle
IP-L073 - Cast Alloy Coated Black



Swing Handle Padlockable
IP-L074 - Cast Alloy Coated Black



3 Point Swing Handle*
IP-L075 - Cast Alloy Coated Black



3 Point Swing Handle Padlockable*
IP-L076 - Cast Alloy Coated Black



Low Profile
IP-L018 - Cast Alloy Coated Black
IP-L019 - Cast Alloy Chrome



Low Profile Padlockable
IP-L041 - Cast Alloy Coated Black
IP-L042 - Cast Alloy Chrome



3 Point Low Profile*
IP-L022 - Cast Alloy Coated Black
IP-L023 - Cast Alloy Chrome



3 Point Low Profile Padlockable*
IP-L024 - Cast Alloy Coated Black
IP-L025 - Cast Alloy Chrome



Stainless Steel Swing Handle
IP-L033 - 316 Stainless Steel



Stainless Steel Swing Handle Padlockable
IP-L037 - 316 Stainless Steel



3 Point Stainless Steel Swing Handle*
IP-L035 - 316 Stainless Steel



3 Point Stainless Steel Swing Handle Padlockable*
IP-L039 - 316 Stainless Steel

*Note: Items marked * are also suitable for 4 point*

Accessories

Vent Plugs, Drain Plugs, Cable Glands



IP Enclosures provide a range of pressure relief vent plugs and drain plugs for electrical enclosures. A range of specialised cable glands are also available including hygienic cable glands and cable gland plates for electrical enclosures.

Pressure Relief Vent Plugs for Pressure Balancing

Prevents damage due to pressure differences.

Protection: IP68, IP67

Material: Stainless Steel

Part Number	Size
IP-SBBVP-01	M12
IP-SBBVP-02	M16
IP-SBBVP-03	M20
IP-SBBVPX-05	M40



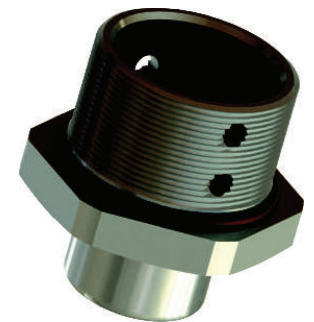
Drain Plugs

Prevents the formation of water condensation.

Protection: IP68, IP66

Material: Stainless Steel

Part Number	Size
IP-IBDRV-1M	M20
IP-IBDRV-2M	M25



IP69 Hygienic Cable Glands

For food, beverage, pharmaceutical and other hygienic industries.

Suitable for high pressure steam cleaning.

Protection: IP69, IP68

Material: Stainless Steel, Seal conforms to FDA Guidelines 21 CFR 177.2600

Part Number	Size
IP-BMFG12	M12
IP-BMFG16	M16
IP-BMFG20	M20
IP-BMFG25	M25



Cable Gland Plates

Suitable for applications using multiple cable glands where space is limited.

Flexible entrance membrane maintains ingress protection.

Protection is maintained when cables are removed.

Protection: IP65

Part Number	No. of Cable Entries	Clamping Range Ø (mm)
IP-BRM00	0	-
IP-BRM12	12	4mm - 13mm
IP-BRM14	14	3mm - 11mm
IP-BRM22	22	16 x 3mm - 6.5mm
		4 x 5mm - 9.2mm
		2 x 8mm-12.5mm
IP-BRM23	23	3.5mm - 8.5mm
IP-BRM29	29	2.5mm - 7mm



Custom Electrical Enclosures



IP Enclosures provide custom electrical enclosures that are designed and manufactured to meet your unique needs.

Electrical enclosures, cabinets and data racks are designed and manufactured to suit project specifications and unique needs. No matter how small, large or complex, we work with customers to meet project requirements.

Major Projects

We work with a wide range customers world wide to provide custom electrical enclosures to meet project requirements. We can design and manufacture to meet existing specifications and drawings or can assist to develop these in conjunction with customers, consultants, end users and contractors.

Modifications to Standard Product

Do you buy electrical enclosures and then modify them by drilling, cutting holes or adding accessories? Save time, money and risk by ordering custom enclosures with holes pre-drilled and cut. We provide an economical alternative for customers who require modified 'custom' enclosures.

Certified IP Rated Enclosures

We are a specialist electrical enclosure brand that specialises in electrical enclosures. You can be confident that your custom enclosure conforms to IEC62208 and IEC/EN/AS60529. We provide custom enclosures up to IP66, Nema 4, Nema 4x including IP55, IP56, IP65 and IP66 rated enclosures.

Examples

- Non-standard shapes and sizes
- Holes and cut-outs
- Custom paint or powder-coat colour
- Anti-graffiti coating
- Locking systems
- Ventilation
- Internal shelves & brackets
- Viewing windows
- Accessories fitted
- ...etc

Simply contact our customer support team and tell us what you need. Our support team will work with you to determine the best and most economical solution. We provide 2D drawings and 3D Models for approval prior to manufacture.



Colour Options



COLOUR CHART

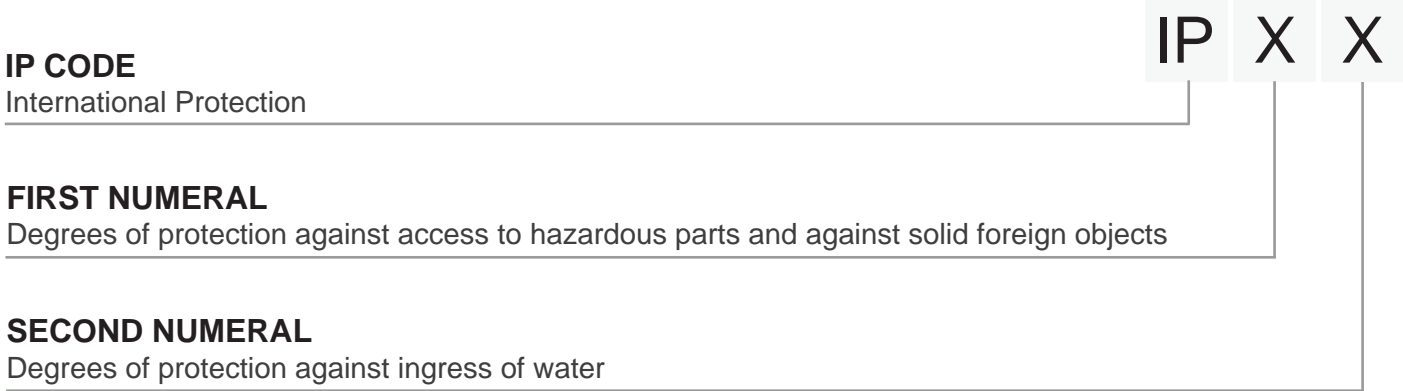
Standard colours are shown in the colour chart below. All enclosures are supplied as RAL7035 Light Grey unless requested otherwise. Refer to tables for part number suffix. Other RAL colours available upon request.

 <p>RAL9016 (Traffic White)</p>	 <p>RAL7035 - Standard (Light Grey)</p>	 <p>RAL 9005 (Jet Black)</p>
 <p>T33 (Smoke Blue)</p>	 <p>RAL2000 (Yellow Orange)</p>	 <p>RAL3001 (R13 Signal Red)</p>

Degrees Of Protection - IP Ratings

Australian Standard IEC/EN/AS60529 - Degrees of protection by enclosures (IP Code)

IEC/EN/AS60529 provides definitions for degrees of protection provided by enclosures of electrical equipment, with regard to protection of persons against access to hazardous parts inside the enclosure and protection of the equipment inside the enclosure against ingress of solid foreign objects and harmful effects due to the ingress of water.



FIRST NUMERAL – Protection against solids/dust
IP0X - No protection
IP1X - Protection against solid objects > 50 mm
IP2X - Protection against solid objects > 12 mm
IP3X - Protection against solid objects > 2.5 mm
IP4X - Protection against solid objects > 1 mm
IP5X - Protection against dust (limited ingress allowed, no harmful deposit)
IP6X - Fully protected from dust (dust tight)

SECOND NUMERAL – Protection against water
IPX0 - No protection
IPX1 - Protection from vertically dripping water
IPX2 - Protection from sprays/dripping of water up to 15° from vertical
IPX3 - Protection from spraying water up to 60° from vertical
IPX4 - Protection from spraying water (all directions) – limited ingress acceptable if no hazard
IPX5 - Protection from low pressure jets of water (all directions) – limited ingress acceptable if no hazard
IPX6 - Protection against powerful jets of water, limited ingress acceptable if no hazard
IPX7 - Protection from temporary immersion
IPX8 - Protection from continuous immersion
IPX9 - Protection from high pressure and temperature water jet (<i>IPX9 is covered by IEC60529 only, not covered by AS60529. Suitable for Pharmaceutical manufacturing, industrial food packaging</i>).
IPX9K - Protection from high pressure and temperature water jet (<i>IPX9K is covered by ISO20653 - Road Vehicles, Degrees of Protection; Not covered by IEC60529 or AS60529</i>).

Protection in the toughest conditions™



IP ENCLOSURES PTY LTD

ABN 17 168 921 319

Head Office: 8 Conara Rd Kunda Park QLD AUSTRALIA 4556

sales@ipenclosures.com.au | www.ipenclosures.com.au

T: 1300 576 094 | + 61 7 5450 1489

GLOBAL DISTRIBUTION: UK Europe USA UAE NZ Asia-Pacific

sales@ipenclosures.com | www.ipenclosures.com

Representative: