



PRODUCT BROCHURE

Wall Mounted Electrical Enclosures

Mounted Electrical Enclosures

S1

Steel | Powder Coated

SINGLE DOOR | IP66




The IP Enclosures S1 range of powder coated galvanised steel single door enclosures are designed to house a variety of electrical switch and control equipment. They are suitable for internal and external electrical installations for industrial, infrastructure, commercial and communications applications. All IP Enclosures are built to precision to ensure consistent high quality standards.

Features & Specifications

IP Enclosures S1 range of steel electrical enclosures are suitable for general industrial applications.

Protection: IP66 IK10, NEMA 4
(Independent accredited test laboratory)

Standard: IEC62208, IEC/EN/AS60529, RoHS
(IEC/EN/AS61439 Compliant, Optional UL508A) 

Material:

- Body: 1.2mm galvanised steel sheet (up to 700x500x250)
1.5mm galvanised steel sheet (800x600x200 and above)
- Gland Plate: 1.5mm galvanised steel sheet
- Door: 1.5mm galvanised steel sheet
- Device Mounting Plate: 1.5mm galvanised steel sheet
- Seal: Polyurethane. UL listed.

Body: The robust monoblock body is fabricated using galvanised steel sheet (1.2mm-1.5mm). Flat face sealing surfaces are provided to increase seal life. Pre-fitted blind nutserts are incorporated to accommodate mounts and accessory fasteners to eliminate drilling and retain IP rating. Integral device plate mounts and M6 earth studs are provided. A galvanised steel gland plate is incorporated into the bottom face. Cutting, pressing and full continuous seam welding using precision automated manufacturing equipment ensures accuracy and consistent high quality.

Single Door: The robust surface mounted door is fabricated using 1.5mm galvanised steel sheet and incorporates concealed removable hinges with captive pins. The door is designed for a 110° opening. Each door contains cable management rails, an M6 earth stud and a high quality machine-applied foamed in place (FIP) Polyurethane seal. Two internal cable management rails can be removed to provide additional space for equipment, duct and door mounted control components.

Seal: A high quality machine-applied full perimeter UL listed Polyurethane seal foamed in place (FIP) provides excellent sealing over a long life. Temperature resistance -40°C to 80°C (160°C short term loading).

Lock: Chrome 5mm double bit insert quarter turn lock with key. A full range of locking options are available upon request.

Device Mounting Plate: The device mounting plate is fabricated using 1.5mm galvanised steel sheet, pressed to provide additional strength and supplied pre-fitted into the enclosure as standard.

Gland Plate: Gland plates incorporate a seal and are provided with fasteners. The size and quantity vary according to enclosure size. The gland plates are incorporated into the bottom face of the enclosure body, located towards the rear adjacent to the device plate for ease of cable management.

Surface Treatment: UL approved epoxy polyester powder coated with a textured finish 80-120 micron average thickness. Standard colour: RAL7035 (Other colours available upon request).



Mounted Electrical Enclosures

S2

Steel | Powder Coated

DOUBLE DOOR | IP55



The IP Enclosures S2 range of powder coated galvanised steel double door enclosures are designed to house a variety of electrical switch and control equipment. They are suitable for internal and external electrical installations for industrial, infrastructure, commercial and communications applications. All IP Enclosures are built to precision to ensure consistent high quality standards.

Features & Specifications

IP Enclosures S2 range of steel electrical enclosures are suitable for general industrial applications.

Protection: IP55 IK10, NEMA 3
(Independent accredited test laboratory)

Standard: IEC62208, IEC/EN/AS60529, RoHS
(IEC/EN/AS61439 Compliant, Optional UL508A) **CE UK CA**

Material:

- Body: 1.5mm galvanised steel sheet
- Gland Plate: 1.5mm galvanised steel sheet
- Door: 1.5mm galvanised steel sheet
- Device Mounting Plate: 1.5mm galvanised steel sheet
- Seal: Polyurethane. UL listed.

Body: The robust monoblock body is fabricated using 1.5mm galvanised steel sheet. Flat face sealing surfaces are provided to increase seal life. Pre-fitted blind nuts are incorporated to accommodate mounts and accessory fasteners to eliminate drilling and retain IP rating. Integral device plate mounts and M6 earth studs are provided. Gland plates are incorporated into the bottom face. Cutting, pressing and full continuous seam welding using precision automated manufacturing equipment ensures accuracy and consistent high quality.

Double Doors: The robust surface mounted doors are fabricated using 1.5mm galvanised steel sheet and incorporates concealed removable hinges with captive pins. The doors are designed to eliminate the central mullion to improve accessibility into the enclosure. The doors are designed for a 110° opening. Each door contains integral cable management rails, an M6 earth stud and a high quality machine-applied foamed in place (FIP) Polyurethane seal. Internal cable management rails can be removed to provide additional space for equipment, duct and door mounted control components.

Seal: A high quality machine-applied full perimeter UL listed Polyurethane seal foamed in place (FIP) provides excellent sealing over a long life. Temperature resistance -40°C to 80°C (160°C short term loading).

Lock: 3 point locking system with key-lock swing handle. A full range of locking solutions are available upon request.

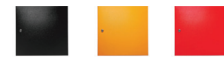
Device Mounting Plate: The device mounting plate is fabricated using 1.5mm galvanised steel sheet, pressed to provide additional strength and supplied pre-fitted into enclosure as standard.

Gland Plates: Gland plates incorporate seals and are provided with fasteners. The size and quantity vary according to enclosure size. The gland plates are incorporated into the bottom face of the enclosure body, located towards the rear adjacent to the device plate for ease of cable management.

Surface Treatment: UL approved epoxy polyester powder coated with a textured finish 80-120 micron average thickness. Standard colour: RAL7035 (Other colours available upon request).





SINGLE DOOR | IP66





Part Number	Enclosure Size	Device Plate	Locks	Accessories			Part Number Suffix		
				Inner Door	Rain Hood	Transparent Door	Optional Colours		
IP-302015	300 x 200 x 150	250 x 130	1	IP-PSID3020	IP-PSRH2015	-	-BLK	-OR	-RED
IP-302515	300 x 250 x 150	250 x 180	1	-	-	-	-BLK	-OR	-RED
IP-303015	300 x 300 x 150	250 x 230	1	IP-PSID3030	IP-PSRH3015	-	-BLK	-OR	-RED
IP-303020	300 x 300 x 200	250 x 230	1	IP-PSID3030	IP-PSRH3020	-	-BLK	-OR	-RED
IP-403015	400 x 300 x 150	350 x 230	1	IP-PSID4030	IP-PSRH3015	IP-4030WINDOOR	-BLK	-OR	-RED
IP-403020	400 x 300 x 200	350 x 230	1	IP-PSID4030	IP-PSRH3020	IP-4030WINDOOR	-BLK	-OR	-RED
IP-404020	400 x 400 x 200	350 x 330	1	IP-PSID4040	IP-PSRH4020	IP-4040WINDOOR	-BLK	-OR	-RED
IP-404030	400 x 400 x 300	350 x 330	1	IP-PSID4040	-	IP-4040WINDOOR	-BLK	-OR	-RED
IP-503015	500 x 300 x 150	450 x 230	1	IP-PSID5030	IP-PSRH3015	IP-5030WINDOOR	-BLK	-OR	-RED
IP-503020	500 x 300 x 200	450 x 230	1	IP-PSID5030	IP-PSRH3020	IP-5030WINDOOR	-BLK	-OR	-RED
IP-504020	500 x 400 x 200	450 x 330	1	IP-PSID5040	IP-PSRH4020	IP-5040WINDOOR	-BLK	-OR	-RED
IP-504025	500 x 400 x 250	450 x 330	1	IP-PSID5040	IP-PSRH4025	IP-5040WINDOOR	-BLK	-OR	-RED
IP-505020	500 x 500 x 200	450 x 430	1	IP-PSID5050	IP-PSRH5020	IP-5050WINDOOR	-BLK	-OR	-RED
IP-505025	500 x 500 x 250	450 x 430	1	IP-PSID5050	IP-PSRH5025	IP-5050WINDOOR	-BLK	-OR	-RED
IP-505030	500 x 500 x 300	450 x 430	1	IP-PSID5050	-	IP-5050WINDOOR	-BLK	-OR	-RED
IP-604020	600 x 400 x 200	550 x 330	2	IP-PSID6040	IP-PSRH4020	IP-6040WINDOOR	-BLK	-OR	-RED
IP-604025	600 x 400 x 250	550 x 330	2	IP-PSID6040	IP-PSRH4025	IP-6040WINDOOR	-BLK	-OR	-RED
IP-604030	600 x 400 x 300	550 x 330	2	IP-PSID6040	-	IP-6040WINDOOR	-BLK	-OR	-RED
IP-606020	600 x 600 x 200	550 x 530	2	IP-PSID6060	IP-PSRH6020	IP-6060WINDOOR	-BLK	-OR	-RED
IP-606030	600 x 600 x 300	550 x 530	2	IP-PSID6060	IP-PSRH6030	IP-6060WINDOOR	-BLK	-OR	-RED
IP-606040	600 x 600 x 400	550 x 530	2	IP-PSID6060	IP-PSRH6040	IP-6060WINDOOR	-BLK	-OR	-RED
IP-705020	700 x 500 x 200	650 x 430	2	IP-PSID7050	IP-PSRH5020	IP-7050WINDOOR	-BLK	-OR	-RED
IP-705025	700 x 500 x 250	650 x 430	2	IP-PSID7050	IP-PSRH5025	IP-7050WINDOOR	-BLK	-OR	-RED
IP-804030	800 x 400 x 300	750 x 330	2	IP-PSID8040	IP-PSRH4030	IP-8040WINDOOR	-BLK	-OR	-RED
IP-806020	800 x 600 x 200	750 x 530	2	IP-PSID8060	IP-PSRH6020	IP-8060WINDOOR	-BLK	-OR	-RED
IP-806025	800 x 600 x 250	750 x 530	2	IP-PSID8060	IP-PSRH6025	IP-8060WINDOOR	-BLK	-OR	-RED
IP-806030	800 x 600 x 300	750 x 530	2	IP-PSID8060	IP-PSRH6030	IP-8060WINDOOR	-BLK	-OR	-RED
IP-806040	800 x 600 x 400	750 x 530	2	IP-PSID8060	IP-PSRH6040	IP-8060WINDOOR	-BLK	-OR	-RED
IP-808020	800 x 800 x 200	750 x 730	2	IP-PSID8080	IP-PSRH8020	IP-8080WINDOOR	-BLK	-OR	-RED
IP-808030	800 x 800 x 300	750 x 730	2	IP-PSID8080	IP-PSRH8030	IP-8080WINDOOR	-BLK	-OR	-RED
IP-808040	800 x 800 x 400	750 x 730	2	IP-PSID8080	IP-PSRH8040	IP-8080WINDOOR	-BLK	-OR	-RED
IP-1006025	1000 x 600 x 250	950 x 530	2	IP-PSID10060	IP-PSRH6025	IP-10060WINDOOR	-BLK	-OR	-RED
IP-1006030	1000 x 600 x 300	950 x 530	2	IP-PSID10060	IP-PSRH6030	IP-10060WINDOOR	-BLK	-OR	-RED
IP-1008030	1000 x 800 x 300	950 x 730	2	IP-PSID10080	IP-PSRH8030	IP-10080WINDOOR	-BLK	-OR	-RED
IP-1008040	1000 x 800 x 400	950 x 730	2	IP-PSID10080	IP-PSRH8040	IP-10080WINDOOR	-BLK	-OR	-RED
IP-1206030	1200 x 600 x 300	1150 x 530	2	IP-PSID12060	IP-PSRH6030	IP-12060WINDOOR	-BLK	-OR	-RED
IP-1208030	1200 x 800 x 300	1150 x 730	2	IP-PSID12080	IP-PSRH8030	IP-12080WINDOOR	-BLK	-OR	-RED
IP-1208040	1200 x 800 x 400	1150 x 730	2	IP-PSID12080	IP-PSRH8040	IP-12080WINDOOR	-BLK	-OR	-RED

SINGLE DOOR, LANDSCAPE ORIENTATION | IP66

Part Number	Enclosure Size	Device Plate	Locks	Accessories			Part Number Suffix		
Standard	H x W x D (mm)	H x W (mm)	Qty	Inner Door	Rain Hood	Transparent Door	Optional Colours		
IP-L304015	300 x 400 x 150	250 x 330	1	IP-PSID3040	IP-PSRH4015	-	-BLK	-OR	-RED
IP-L304020	300 x 400 x 200	250 x 330	1	IP-PSID3040	IP-PSRH4020	-	-BLK	-OR	-RED
IP-L406020	400 x 600 x 200	350 x 530	1	IP-PSID4060	IP-PSRH6020	IP-4060WINDOOR	-BLK	-OR	-RED
IP-L406030	400 x 600 x 300	350 x 530	1	IP-PSID4060	IP-PSRH6030	IP-4060WINDOOR	-BLK	-OR	-RED
IP-L608030	600 x 800 x 300	750 x 730	2	IP-PSID6080	IP-PSRH8030	IP-6080WINDOOR	-BLK	-OR	-RED



SINGLE DOOR, FLOOR STANDING WITH PEDESTAL | IP66

Part Number	Enclosure Size	Device Plate	Locks	Accessories			Part Number Suffix		
Standard	H x W x D (mm)	H x W (mm)	Qty	Inner Door	Ventilated Roof	Transparent Door	Optional Colours		
IP-1408040	1400 x 800 x 400	1350 x 730	2	IP-PSID14080	IP-VR8040	-	-BLK	-OR	-RED
IP-1608040	1600 x 800 x 400	1550 x 730	2	IP-PSID16080	IP-VR8040	-	-BLK	-OR	-RED
IP-1608060	1600 x 800 x 600	1550 x 730	2	IP-PSID16080	-	-	-BLK	-OR	-RED
IP-20010040	2000 x 1000 x 400	1950 x 930	2	IP-PSID200100	IP-VR10040	-	-BLK	-OR	-RED

* +100mm base plinth

DOUBLE DOOR | IP55

Part Number	Enclosure Size	Device Plate	Lock	Accessories			Part Number Suffix		
Standard	H x W x D (mm)	H x W (mm)	Type	Inner Door	Rain Hood	Transparent Door	Optional Colours		
IP-L4010030	400 x 1000 x 300	350 x 930	2	IP-PSID40100	IP-PSRH10030	-	-BLK	-OR	-RED
IP-L4010040	400 x 1000 x 400	350 x 930	2	IP-PSID40100	IP-PSRH10040	-	-BLK	-OR	-RED
IP-L6010030	600 x 1000 x 300	550 x 930	3-Point	IP-PSID60100	IP-PSRH10030	-	-BLK	-OR	-RED
IP-L6010040	600 x 1000 x 400	550 x 930	3-Point	IP-PSID60100	IP-PSRH10040	-	-BLK	-OR	-RED
IP-L4012030	400 x 1200 x 300	350 x 1130	2	-	IP-PSRH12030	-	-BLK	-OR	-RED
IP-L4012040	400 x 1200 x 400	350 x 1130	2	-	IP-PSRH12040	-	-BLK	-OR	-RED
IP-L6012030	600 x 1200 x 300	550 x 1130	3-Point	-	IP-PSRH12030	-	-BLK	-OR	-RED
IP-L6012040	600 x 1200 x 400	550 x 1130	3-Point	-	IP-PSRH12040	-	-BLK	-OR	-RED
IP-10010030	1000 x 1000 x 300	950 x 930	3-Point	IP-PSID100100	IP-PSRH10030	-	-BLK	-OR	-RED
IP-10010040	1000 x 1000 x 400	950 x 930	3-Point	IP-PSID100100	IP-PSRH10040	-	-BLK	-OR	-RED
IP-12010030	1200 x 1000 x 300	1150 x 930	3-Point	IP-PSID120100	IP-PSRH10030	-	-BLK	-OR	-RED
IP-12010040	1200 x 1000 x 400	1150 x 930	3-Point	IP-PSID120100	IP-PSRH10040	-	-BLK	-OR	-RED
IP-12012030	1200 x 1200 x 300	1150 x 1130	3-Point	IP-PSID120120	IP-PSRH12030	-	-BLK	-OR	-RED
IP-12012040	1200 x 1200 x 400	1150 x 1130	3-Point	IP-PSID120120	IP-PSRH12040	-	-BLK	-OR	-RED

Mounted Electrical Enclosures

A1

Marine Grade Aluminium | Powder Coated

SINGLE DOOR | IP66



The IP Enclosures A1 range of powder coated marine grade aluminium electrical enclosures are designed to house a variety of electrical switch and control equipment in harsh environments that require a high level of corrosion resistance.

Features & Specifications

IP Enclosures A1 range of marine grade aluminium electrical enclosures are suitable for general industrial applications.

Protection: IP66

Standard: IEC62208, IEC/EN/AS60529, RoHS 

Material:

- Body: 1.2mm to 1.5mm marine grade aluminium
- Door: 1.5mm marine grade aluminium
- Device Mounting Plate: 1.5mm galvanised steel sheet
- Seal: Polyurethane

Body: The robust monoblock body is fabricated using marine grade aluminium (1.2mm-1.5mm). Flat face sealing surfaces are provided to increase seal life. Integral device plate mounts, M6 earth studs and welded mounting feet are incorporated. Cutting, pressing and full continuous seam welding using precision automated manufacturing equipment ensures accuracy and consistent high quality.

Single Door: The robust surface mounted door is fabricated using 1.5mm marine grade aluminium and incorporates concealed removable hinges with captive pins. The door is designed for a 110° opening. Each door contains an M6 earth stud and a high quality machine-applied foamed in place (FIP) Polyurethane seal.

Seal: A high quality machine-applied full perimeter UL listed Polyurethane seal foamed in place (FIP) provides excellent sealing over a long life. Temperature resistance -40°C to 80°C (160°C short term loading).

Lock: Quarter turn lock with key. A full range of locking solutions are available upon request.

Device Mounting Plate: The device mounting plate is fabricated using 1.5mm galvanised steel sheet, pressed to provide additional strength and supplied pre-fitted into the enclosure as standard.

Surface Treatment: UL approved epoxy polyester powder coated with a textured finish 80-120 micron average thickness. Standard colour: RAL7035 (Other colours available upon request).



Part Number	Enclosure Size	Device Plate	Locks
Standard	H x W x D (mm)	H x W (mm)	Qty
IP-A302015	300 x 200 x 150	250 x 130	1
IP-A302515	300 x 250 x 150	250 x 180	1
IP-A303015	300 x 300 x 150	250 x 230	1
IP-A303020	300 x 300 x 200	250 x 230	1
IP-A403015	400 x 300 x 150	350 x 230	1
IP-A403020	400 x 300 x 200	350 x 230	1
IP-A404020	400 x 400 x 200	350 x 330	1
IP-A404030	400 x 400 x 300	350 x 330	1
IP-A503015	500 x 300 x 150	450 x 230	1
IP-A503020	500 x 300 x 200	450 x 230	1
IP-A504020	500 x 400 x 200	450 x 330	1
IP-A504025	500 x 400 x 250	450 x 330	1
IP-A505020	500 x 500 x 200	450 x 430	1
IP-A505025	500 x 500 x 250	450 x 430	1
IP-A505030	500 x 500 x 300	450 x 430	1
IP-A604020	600 x 400 x 200	550 x 330	2
IP-A604025	600 x 400 x 250	550 x 330	2
IP-A606020	600 x 600 x 200	550 x 530	2
IP-A606030	600 x 600 x 300	550 x 530	2
IP-A606040	600 x 600 x 400	550 x 530	2
IP-A705020	700 x 500 x 200	650 x 430	2
IP-A804030	800 x 400 x 300	750 x 330	2
IP-A806020	800 x 600 x 200	750 x 530	2
IP-A806030	800 x 600 x 300	750 x 530	2
IP-A808020	800 x 800 x 200	750 x 730	2
IP-A808030	800 x 800 x 300	750 x 730	2

Mounted Electrical Enclosures

SS1

Stainless Steel Grade 316/316L (Optional 304)

SINGLE DOOR | IP66





The IP Enclosures SS1 range of stainless steel single door enclosures are designed to house a variety of electrical switch and control equipment in extreme environments. They are suitable for internal and external electrical installations for industrial, infrastructure, commercial, communications, defence, marine, food and beverage applications. All IP Enclosures are built to precision to ensure consistent high quality standards.

Features & Specifications

IP Enclosures SS1 range of stainless steel electrical enclosures are suitable for general industrial applications.

Protection: IP66 IK10, NEMA 4x
(Independent accredited test laboratory)

Standard: IEC62208, IEC/EN/AS60529, RoHS
(IEC/EN/AS61439 Compliant, Optional UL508A)  

Material:

- Body: 1.5mm Grade 316/316L Stainless Steel (Optional 304)
- Door: 1.5mm Grade 316/316L Stainless Steel (Optional 304)
- Device Mounting Plate: 1.5mm Galvanised Steel Sheet
- Seal: Polyurethane. UL listed.

Surface Finish: 0.4 micron Ra surface brushed finish

Body: The robust monoblock body is fabricated using 1.5mm Grade 316/316L Stainless Steel (Grade 304 is also available). Flat face sealing surfaces are provided to increase seal life. Pre-fitted blind nutserts are incorporated to accommodate mounts and accessory fasteners to eliminate drilling and retain IP rating. Integral device plate mounts and M6 earth studs are provided. Cutting, pressing and full continuous seam welding using precision automated manufacturing equipment ensures accuracy and consistent high quality.

Single Door: The robust surface mounted door is fabricated using 1.5mm Grade 316/316L Stainless Steel and incorporates concealed removable hinges with captive pins (Grade 304 is also available). The door is designed for a 110° opening. Each door contains cable management rails, an M6 earth stud and a high quality machine-applied foamed in place (FIP) Polyurethane seal. Two internal cable management rails can be removed to provide additional space for equipment, duct and door mounted control components.

Seal: A high quality machine-applied full perimeter UL listed Polyurethane seal foamed in place (FIP) provides excellent sealing over a long life. Temperature resistance -40°C to 80°C (160°C short term loading).

Lock: Grade 316 Stainless Steel 8mm square drive quarter turn lock with key. A full range of locking solutions are available upon request.

Device Mounting Plate: The device mounting plate is fabricated using 1.5mm galvanised steel sheet, pressed to provide additional strength and supplied pre-fitted into the enclosure as standard.

Incorporates many advanced features as standard

- Fabricated using grade 316 stainless steel (Optional 304)
- Incorporates flat sealing face to improve seal life
- Includes door cable rails
- Includes nutserts for mounting brackets and accessories to retain IP rating
- Includes mounting points for accessories including inner door escutcheons, rain hoods etc.



Mounted Electrical Enclosures

SS2

Stainless Steel Grade 316/316L (Optional 304)

DOUBLE DOOR | IP55




The IP Enclosures SS2 range of stainless steel double door enclosures are designed to house a variety of electrical switch and control equipment in extreme environments. They are suitable for internal and external electrical installations for industrial, infrastructure, commercial, communications, defence, marine, food and beverage applications. All IP Enclosures are built to precision to ensure consistent high quality standards.

Features & Specifications

IP Enclosures SS2 range of grade stainless steel electrical enclosures are suitable for general industrial applications.

Protection: IP55 IK10, NEMA 3x
(Independent accredited test laboratory)

Standard: IEC62208, IEC/EN/AS60529, RoHS (IEC/EN/AS61439 Compliant, Optional UL508A) 

Material:

- Body: 1.5mm Grade 316/316L Stainless Steel (Optional 304)
- Door: 1.5mm Grade 316/316L Stainless Steel (Optional 304)
- Device Mounting Plate: 1.5mm Galvanised Steel Sheet
- Seal: Polyurethane. UL listed.

Surface Finish: 0.4 micron Ra surface brushed finish

Body: The robust monoblock body is fabricated using 1.5mm Grade 316/316L Stainless Steel (Grade 304 is also available). Flat face sealing surfaces are provided to increase seal life. Pre-fitted blind nutserts are incorporated to accommodate mounts and accessory fasteners to eliminate drilling and retain IP rating. Integral device plate mounts and M6 earth studs are provided. Cutting, pressing and full continuous seam welding using precision automated manufacturing equipment ensures accuracy and consistent high quality.

Double Doors: The robust surface mounted doors are fabricated using 1.5mm Grade 316/316L Stainless Steel and incorporates concealed removable hinges with captive pins (Grade 304 is also available). The doors are designed to eliminate the central mullion to improve accessibility into the enclosure. The doors are designed for a 110° opening. Each door contains cable management rails, an M6 earth stud and a high quality machine-applied foamed in place (FIP) Polyurethane seal. Internal cable management rails can be removed to provide additional space for equipment, duct and door mounted control components.

Seal: A high quality machine-applied full perimeter UL listed Polyurethane seal foamed in place (FIP) provides excellent sealing over a long life. Temperature resistance -40°C to 80°C (160°C short term loading).

Lock: 3 point locking system with key-lock swing handle. A full range of locking solutions are available upon request.

Device Mounting Plate: The device mounting plate is fabricated using 1.5mm galvanised steel sheet, pressed to provide additional strength and supplied pre-fitted into the enclosure as standard.



Incorporates many advanced features as standard

- Fabricated using grade 316 stainless steel (Optional 304)
- Incorporates flat sealing face to improve seal life
- Includes door cable rails
- Includes nutserts for mounting brackets and accessories to retain IP rating
- Includes mounting points for accessories including inner door escutcheons, rain hoods etc.

Stainless Steel 316/316L (Optional 304)

SS1

SINGLE DOOR | IP66

Part Number	Optional	Enclosure Size	Device Plate	Locks	Accessories		
Grade 316	Grade 304	H x W x D (mm)	H x W (mm)	Qty	Inner Door	Rain Hood	Transparent Door
IP-SS302015	IP-304-302015	300 x 200 x 150	250 x 130	1	IP-SSID3020	IP-SSRH2015	-
IP-SS302515	IP-304-302515	300 x 250 x 150	250 x 180	1	-	-	-
IP-SS303015	IP-304-303015	300 x 300 x 150	250 x 230	1	IP-SSID3030	IP-SSRH3015	-
IP-SS303020	IP-304-303020	300 x 300 x 200	250 x 230	1	IP-SSID3030	IP-SSRH3020	-
IP-SS403015	IP-304-403015	400 x 300 x 150	350 x 230	1	IP-SSID4030	IP-SSRH3015	IP-SS4030WINDOOR
IP-SS403020	IP-304-403020	400 x 300 x 200	350 x 230	1	IP-SSID4030	IP-SSRH3020	IP-SS4030WINDOOR
IP-SS404020	IP-304-404020	400 x 400 x 200	350 x 330	1	IP-SSID4040	IP-SSRH4020	IP-SS4040WINDOOR
IP-SS404030	IP-304-404030	400 x 400 x 300	350 x 330	1	IP-SSID4040	IP-SSRH4030	IP-SS4040WINDOOR
IP-SS503015	IP-304-503015	500 x 300 x 150	450 x 230	1	IP-SSID5030	IP-SSRH3015	IP-SS5030WINDOOR
IP-SS503020	IP-304-503020	500 x 300 x 200	450 x 230	1	IP-SSID5030	IP-SSRH3020	IP-SS5030WINDOOR
IP-SS504020	IP-304-504020	500 x 400 x 200	450 x 330	1	IP-SSID5040	IP-SSRH4020	IP-SS5040WINDOOR
IP-SS504025	IP-304-504025	500 x 400 x 250	450 x 330	1	IP-SSID5040	IP-SSRH4025	IP-SS5040WINDOOR
IP-SS505020	IP-304-505020	500 x 500 x 200	450 x 430	1	IP-SSID5050	IP-SSRH5020	IP-SS5050WINDOOR
IP-SS505025	IP-304-505025	500 x 500 x 250	450 x 430	1	IP-SSID5050	IP-SSRH5025	IP-SS5050WINDOOR
IP-SS505030	IP-304-505030	500 x 500 x 300	450 x 430	1	IP-SSID5050	-	IP-SS5050WINDOOR
IP-SS604020	IP-304-604020	600 x 400 x 200	550 x 330	2	IP-SSID6040	IP-SSRH4020	IP-SS6040WINDOOR
IP-SS604025	IP-304-604025	600 x 400 x 250	550 x 330	2	IP-SSID6040	IP-SSRH4025	IP-SS6040WINDOOR
IP-SS604030	IP-304-604030	600 x 400 x 300	550 x 330	2	IP-SSID6040	IP-SSRH4030	IP-SS6040WINDOOR
IP-SS606020	IP-304-606020	600 x 600 x 200	550 x 530	2	IP-SSID6060	IP-SSRH6020	IP-SS6060WINDOOR
IP-SS606030	IP-304-606030	600 x 600 x 300	550 x 530	2	IP-SSID6060	IP-SSRH6030	IP-SS6060WINDOOR
IP-SS606040	IP-304-606040	600 x 600 x 400	550 x 530	2	IP-SSID6060	IP-SSRH6040	IP-SS6060WINDOOR
IP-SS705020	IP-304-705020	700 x 500 x 200	650 x 430	2	IP-SSID7050	IP-SSRH5020	IP-SS7050WINDOOR
IP-SS705025	IP-304-705025	700 x 500 x 250	650 x 430	2	IP-SSID7050	IP-SSRH5025	IP-SS7050WINDOOR
IP-SS804030	IP-304-804030	800 x 400 x 300	750 x 330	2	IP-SSID8040	IP-SSRH4030	IP-SS8040WINDOOR
IP-SS806020	IP-304-806020	800 x 600 x 200	750 x 530	2	IP-SSID8060	IP-SSRH6020	IP-SS8060WINDOOR
IP-SS806025	IP-304-806025	800 x 600 x 250	750 x 530	2	IP-SSID8060	IP-SSRH6025	IP-SS8060WINDOOR
IP-SS806030	IP-304-806030	800 x 600 x 300	750 x 530	2	IP-SSID8060	IP-SSRH6030	IP-SS8060WINDOOR
IP-SS808020	IP-304-808020	800 x 800 x 200	750 x 730	2	IP-SSID8080	IP-SSRH8020	IP-SS8080WINDOOR
IP-SS808030	IP-304-808030	800 x 800 x 300	750 x 730	2	IP-SSID8080	IP-SSRH8030	IP-SS8080WINDOOR
IP-SS808040	IP-304-808040	800 x 800 x 400	750 x 730	2	IP-SSID8080	IP-SSRH8040	IP-SS8080WINDOOR
IP-SS1006025	IP-304-1006025	1000 x 600 x 250	950 x 530	2	IP-SSID10060	IP-SSRH6025	IP-SS10060WINDOOR
IP-SS1006030	IP-304-1006030	1000 x 600 x 300	950 x 530	2	IP-SSID10060	IP-SSRH6030	IP-SS10060WINDOOR
IP-SS1008030	IP-304-1008030	1000 x 800 x 300	950 x 730	2	IP-SSID10080	IP-SSRH8030	IP-SS10080WINDOOR
IP-SS1008040	IP-304-1008040	1000 x 800 x 400	950 x 730	2	IP-SSID10080	IP-SSRH8040	IP-SS10080WINDOOR
IP-SS1206030	IP-304-1206030	1200 x 600 x 300	1150 x 530	2	IP-SSID12060	IP-SSRH6030	IP-SS12060WINDOOR
IP-SS1208030	IP-304-1208030	1200 x 800 x 300	1150 x 730	2	IP-SSID12080	IP-SSRH8030	IP-SS12080WINDOOR
IP-SS1208040	IP-304-1208040	1200 x 800 x 400	1150 x 730	2	IP-SSID12080	IP-SSRH8040	IP-SS12080WINDOOR

Stainless Steel 316/316L (Optional 304) **SS1 SS2**

SINGLE DOOR, LANDSCAPE ORIENTATION | IP66

Part Number	Optional	Enclosure Size	Device Plate	Locks	Accessories		
Grade 316	Grade 304	H x W x D (mm)	H x W (mm)	Qty	Inner Door	Rain Hood	Transparent Door
IP-SSL304015	IP-304-L304015	300 x 400 x 150	250 x 330	1	IP-SSID3040	IP-SSRH4015	-
IP-SSL304020	IP-304-L304020	300 x 400 x 200	250 x 330	1	IP-SSID3040	IP-SSRH4020	-
IP-SSL406020	IP-304-L406020	400 x 600 x 200	350 x 530	1	IP-SSID4060	IP-SSRH6020	IP-SS4060WINDOOR
IP-SSL406030	IP-304-L406030	400 x 600 x 300	350 x 530	1	IP-SSID4060	IP-SSRH6030	IP-SS4060WINDOOR
IP-SSL608030	IP-304-L608030	600 x 800 x 300	550 x 730	2	IP-SSID6080	IP-SSRH8030	IP-SS6080WINDOOR

SINGLE DOOR, FLOOR STANDING WITH PEDESTAL | IP66

Part Number	Optional	Enclosure Size	Device Plate	Locks	Accessories		
Grade 316	Grade 304	H x W x D (mm)	H x W (mm)	Qty	Inner Door	Rain Hood	Transparent Door
IP-SS1408040	IP-304-1408040	1400* x 800 x 400	1350 x 730	2	IP-SSID14080	-	-
IP-SS1608040	IP-304-1608040	1600* x 800 x 400	1550 x 730	2	IP-SSID16080	-	-
IP-SS1608060	IP-304-1608060	1600* x 800 x 600	1550 x 730	2	IP-SSID16080	-	-
IP-SS20010040	IP-304-20010040	2000* x 1000 x 400	1950 x 930	2	IP-SSID200100	-	-

* +100mm base plinth

DOUBLE DOOR | IP55

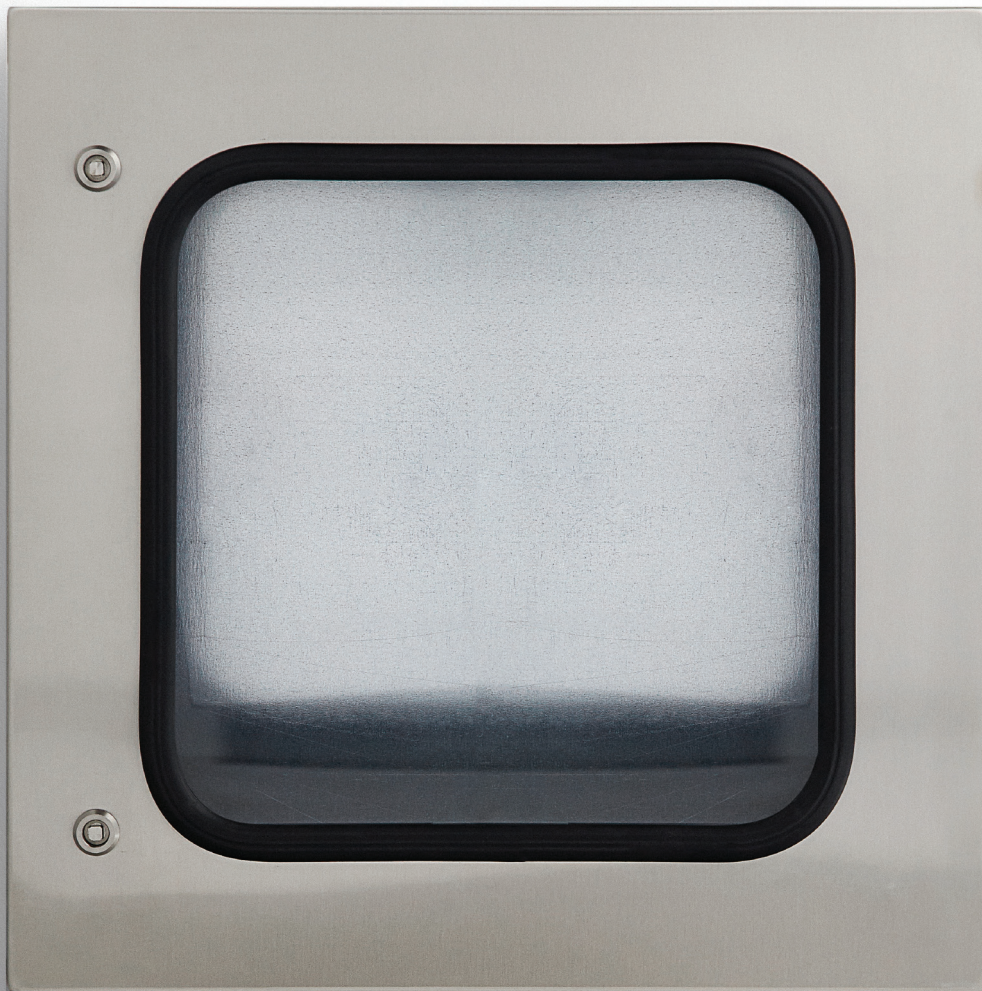
Part Number	Optional	Enclosure Size	Device Plate	Lock	Accessories		
Grade 316	Grade 304	H x W x D (mm)	H x W (mm)	Type	Inner Door	Rain Hood	Transparent Door
IP-SSL4010030	IP-304-L4010030	400 x 1000 x 300	350 x 930	2	IP-SSID40100	IP-SSRH10030	-
IP-SSL4010040	IP-304-L4010040	400 x 1000 x 400	350 x 930	2	IP-SSID40100	IP-SSRH10040	-
IP-SSL6010030	IP-304-L6010030	600 x 1000 x 300	550 x 930	3-Point	IP-SSID60100	IP-SSRH10030	-
IP-SSL6010040	IP-304-L6010040	600 x 1000 x 400	550 x 930	3-Point	IP-SSID60100	IP-SSRH10040	-
IP-SSL4012030	IP-304-L4012030	400 x 1200 x 300	350 x 1130	2	-	IP-SSRH12030	-
IP-SSL4012040	IP-304-L4012040	400 x 1200 x 400	350 x 1130	2	-	IP-SSRH12040	-
IP-SSL6012030	IP-304-L6012030	600 x 1200 x 300	550 x 1130	3-Point	-	IP-SSRH12030	-
IP-SSL6012040	IP-304-L6012040	600 x 1200 x 400	550 x 1130	3-Point	-	IP-SSRH12040	-
IP-SS10010030	IP-304-10010030	1000 x 1000 x 300	950 x 930	3-Point	IP-SSID100100	IP-SSRH10030	-
IP-SS10010040	IP-304-10010040	1000 x 1000 x 400	950 x 930	3-Point	IP-SSID100100	IP-SSRH10040	-
IP-SS12010030	IP-304-12010030	1200 x 1000 x 300	1150 x 930	3-Point	IP-SSID120100	IP-SSRH10030	-
IP-SS12010040	IP-304-12010040	1200 x 1000 x 400	1150 x 930	3-Point	IP-SSID120100	IP-SSRH10040	-
IP-SS12012030	IP-304-12012030	1200 x 1200 x 300	1150 x 1130	3-Point	IP-SSID120120	IP-SSRH12030	-
IP-SS12012040	IP-304-12012040	1200 x 1200 x 400	1150 x 1130	3-Point	IP-SSID120120	IP-SSRH12040	-

Accessories

WINDOOR™

Transparent Door | Wall Mounted

GLAZED | IP66





Transparent Doors can be easily fitted to our range of electrical enclosures. Transparent Doors are provided as a standard accessory. Simply remove the standard door and replace with a transparent door.

IP Enclosures provide a range of transparent glazed Windoors™ that can be easily fitted to our range of electrical enclosures. Transparent doors are provided as a standard accessory. Simply remove the existing door and replace with a transparent door.

Features and Specifications

Protection: IP66

Standard: IEC/EN/AS60529, RoHS  

STEEL RANGE

- Enclosure Door: 1.5mm galvanised steel sheet
- Enclosure Seal: Polyurethane
- Windows: 4mm transparent tempered glass

Door: Fabricated from 1.5mm galvanised steel sheet incorporating concealed removable hinges with captive pins. Provided with recessed windows manufactured from 4mm transparent tempered glass with seal. Powder coated 80-120 micron.

Seal: Machine applied Polyurethane foamed in place (FIP).

Lock: Chrome 5mm double bit quarter turn lock.



STAINLESS STEEL RANGE

- Enclosure Door: 1.5mm Grade 316/316L Stainless Steel
- Enclosure Seal: Polyurethane
- Windows: 4mm transparent tempered glass

Door: Fabricated from 1.5mm Grade 316/316L Stainless Steel incorporating concealed removable hinges with captive pins. Provided with recessed windows manufactured from 4mm transparent tempered glass with seal.

Seal: Machine applied Polyurethane foamed in place (FIP).

Lock: 316ss 8mm square drive quarter turn lock.

STEEL



Size	Accessories	Part Number Suffix		
H x W (mm)	Transparent Door	Optional Colours		
400 x 400	IP-4040WINDOOR	-BLK	-OR	-RED
400 x 600	IP-4060WINDOOR	-BLK	-OR	-RED
500 x 300	IP-5030WINDOOR	-BLK	-OR	-RED
500 x 400	IP-5040WINDOOR	-BLK	-OR	-RED
500 x 500	IP-5050WINDOOR	-BLK	-OR	-RED
600 x 400	IP-6040WINDOOR	-BLK	-OR	-RED
600 x 600	IP-6060WINDOOR	-BLK	-OR	-RED
700 x 500	IP-7050WINDOOR	-BLK	-OR	-RED
800 x 400	IP-8040WINDOOR	-BLK	-OR	-RED
800 x 600	IP-8060WINDOOR	-BLK	-OR	-RED
800 x 800	IP-8080WINDOOR	-BLK	-OR	-RED
1000 x 600	IP-10060WINDOOR	-BLK	-OR	-RED
1000 x 800	IP-10080WINDOOR	-BLK	-OR	-RED
1200 x 600	IP-12060WINDOOR	-BLK	-OR	-RED
1200 x 800	IP-12080WINDOOR	-BLK	-OR	-RED

316 STAINLESS STEEL

Size	Part Number
H x W (mm)	Transparent Door
400 x 400	IP-SS4040WINDOOR
400 x 600	IP-SS4060WINDOOR
500 x 300	IP-SS5030WINDOOR
500 x 400	IP-SS5040WINDOOR
500 x 500	IP-SS5050WINDOOR
600 x 400	IP-SS6040WINDOOR
600 x 600	IP-SS6060WINDOOR
700 x 500	IP-SS7050WINDOOR
800 x 400	IP-SS8040WINDOOR
800 x 600	IP-SS8060WINDOOR
800 x 800	IP-SS8080WINDOOR
1000 x 600	IP-SS10060WINDOOR
1000 x 800	IP-SS10080WINDOOR
1200 x 600	IP-SS12060WINDOOR
1200 x 800	IP-SS12080WINDOOR

Accessories

ID

Inner Door Escutcheons | Wall Mounted



IP Enclosures inner door escutcheons are designed and manufactured to easily fit into any IP Enclosures wall mounted electrical enclosure without drilling. Inner doors are tool lockable.

Inner door escutcheons enable operators to access control equipment while maintaining separation of hazardous voltage equipment. Inner door kits can be fitted to all IP Enclosures wall mounted electrical enclosures without drilling.

STEEL RANGE

Material: 1.2-1.5mm galvanised steel sheet

Lock: Chrome 5mm double bit insert quarter turn lock.

Surface Treatment: UL approved epoxy polyester powder coated with a textured finish. 80-120 micron average thickness.

Standard colour: RAL7035. Other colour options are available. Refer to table below.

STEEL



Size	Accessories	Clearance Dimensions						Part Number Suffix		
H x W (mm)	Inner Door	Inner Door to Outer Door	Inner Door to Mounting Plate: Enclosure Depth					Optional Colours		
			150mm	200mm	250mm	300mm	400mm			
300 x 200	IP-PSID3020	68.3mm	67.8mm	-	-	-	-	-BLK	-OR	-RED
300 x 300	IP-PSID3030	68.3mm	67.8mm	117.8mm	-	-	-	-BLK	-OR	-RED
400 x 300	IP-PSID4030	68.3mm	-	117.8mm	-	217.8mm	-	-BLK	-OR	-RED
400 x 400	IP-PSID4040	68.3mm	-	117.8mm	-	217.8mm	-	-BLK	-OR	-RED
500 x 300	IP-PSID5030	68.3mm	67.8mm	117.8mm	-	-	-	-BLK	-OR	-RED
500 x 400	IP-PSID5040	68.3mm	-	117.8mm	167.8mm	-	-	-BLK	-OR	-RED
500 x 500	IP-PSID5050	68.3mm	-	117.8mm	167.8mm	217.8mm	-	-BLK	-OR	-RED
600 x 400	IP-PSID6040	68.3mm	-	117.8mm	167.8mm	217.8mm	-	-BLK	-OR	-RED
600 x 600	IP-PSID6060	68.3mm	-	117.8mm	-	217.8mm	317.8mm	-BLK	-OR	-RED
700 x 500	IP-PSID7050	68.3mm	-	117.8mm	167.8mm	-	-	-BLK	-OR	-RED
800 x 600	IP-PSID8060	68.3mm	-	117.8mm	167.8mm	217.8mm	-	-BLK	-OR	-RED
800 x 800	IP-PSID8080	68.3mm	-	117.8mm	-	217.8mm	317.8mm	-BLK	-OR	-RED
1000 x 600	IP-PSID10060	68.3mm	-	-	167.8mm	217.8mm	-	-BLK	-OR	-RED
1000 x 800	IP-PSID10080	68.3mm	-	117.8mm	-	217.8mm	317.8mm	-BLK	-OR	-RED
1000 x 1000	IP-PSID100100	68.3mm	-	-	-	217.8mm	317.8mm	-BLK	-OR	-RED
1200 x 600	IP-PSID12060	68.3mm	-	-	-	217.8mm	-	-BLK	-OR	-RED
1200 x 800	IP-PSID12080	68.3mm	-	-	-	217.8mm	317.8mm	-BLK	-OR	-RED
1200 x 1000	IP-PSID120100	68.3mm	-	-	-	217.8mm	317.8mm	-BLK	-OR	-RED
1200 x 1200	IP-PSID120120	68.3mm	-	-	-	217.8mm	317.8mm	-BLK	-OR	-RED

STAINLESS STEEL RANGE

Material: 1.2-1.5mm Grade 316/316L Stainless Steel

Lock: 316 Stainless Steel 8mm square drive quarter turn lock.

STAINLESS STEEL

Size	Accessories	Clearance Dimensions					
H x W (mm)	Inner Door	Inner Door to Outer Door	Inner Door to Mounting Plate: Enclosure Depth				
			150mm	200mm	250mm	300mm	400mm
300 x 200	IP-SSID3020	68mm	67.2mm	-	-	-	-
300 x 300	IP-SSID3030	68mm	67.2mm	117.2mm	-	-	-
400 x 300	IP-SSID4030	68mm	67.2mm	117.2mm	-	-	-
400 x 400	IP-SSID4040	68mm	-	117.2mm	-	-	-
500 x 400	IP-SSID5040	68mm	-	-	167.2mm	-	-
500 x 500	IP-SSID5050	68mm	-	117.2mm	167.2mm	-	-
600 x 400	IP-SSID6040	68mm	-	117.2mm	-	217.2mm	317.2mm
600 x 600	IP-SSID6060	68mm	-	117.2mm	-	217.2mm	317.2mm
700 x 500	IP-SSID7050	68mm	-	-	167.2mm	-	-
800 x 600	IP-SSID8060	68mm	-	-	167.2mm	217.2mm	-
800 x 800	IP-SSID8080	68mm	-	-	-	217.2mm	-
1000 x 600	IP-SSID10060	68mm	-	-	-	217.2mm	-
1000 x 800	IP-SSID10080	68mm	-	-	-	217.2mm	317.2mm
1000 x 1000	IP-SSID100100	68mm	-	-	-	217.2mm	317.2mm
1200 x 800	IP-SSID12080	68mm	-	-	-	217.2mm	-
1200 x 1000	IP-SSID120100	68mm	-	-	-	217.2mm	317.2mm
1200 x 1200	IP-SSID120120	68mm	-	-	-	217.2mm	317.2mm



DIN Rail Kits | Wall Mounted



IP Enclosures DIN Rail Kits are designed to be easily fitted without drilling. The separate internal chassis frame can be fitted with components and wired prior to assembly into the enclosure. The removable escutcheon plates provide protection to the full perimeter of the enclosure.

The IP Enclosures DIN Rail Kits are designed to be easily fitted to IP Enclosures electrical enclosures without drilling. They can be fitted into steel and stainless steel enclosures.

DIN Rail Kits are suitable for steel and stainless steel enclosures. The separate internal chassis frame can be fitted with components and wired prior to assembly into the enclosure without drilling. Removable escutcheon plates provide protection to the perimeter of the enclosure.

Chassis Material: Galvanised steel sheet

Escutcheon Plates: UL approved epoxy polyester powder coated with a textured finish. 80-120 micron average thickness. The standard electrical enclosure colour is RAL7035. A full range of other colour options are available upon request.

Slotted Din Rail Material: Electrogalvanised Steel 7.5x35 RoHS Compliant. High quality DIN Rail manufactured from electrogalvanised steel for increased corrosion resistance. Standard 35mm wide symmetrical TS35 DIN Rail compatible with EN50022 and DIN46277-3.

- **Material:** Steel
- **Plating:** ALKALI ZINC Cr+3 TOP COAT (10-12 Microns)
- **Standards:** DIN5022, DIN5033, EN60715. RoHS Compliant.
- **Dimensions:** 7.5 mm deep x 35 mm wide.
- **Colour:** Silver
- **Type:** TS35 Slotted



Part Number	Size	Configuration
SKU	Pole, H x W (mm)	Qty Row x Qty
IP-DB12	12 Pole to suit 300H x 400W Enclosure	1 row of 12
IP-DB24	24 Pole to suit 400H x 400W Enclosure	2 rows of 12
IP-DB36	36 Pole to suit 600H x 400W Enclosure	3 rows of 12
IP-DB48	48 Pole to suit 400H x 600W Enclosure	2 rows of 24
IP-DB72	72 Pole to suit 600H x 600W Enclosure	3 rows of 24
IP-DB96	96 Pole to suit 800H x 600W Enclosure	4 rows of 24
IP-DB144	144 Pole to suit 1000H x 600W Enclosure	6 rows of 24
IP-DBFILLER	10 Pole Filler	-

Accessories

RH

Rain Hoods | Wall Mounted



IP Enclosures provide a range of standard rain hoods for steel and stainless steel electrical enclosures to prevent settling and building up of liquids, corrosive solids, minerals, dust, dirt and debris on top of the enclosure.

IP Enclosures provide a range of standard rain hoods for steel and stainless steel electrical enclosures. All IP Enclosures wall mounted electrical enclosures are manufactured with nutserts to accommodate rain hoods without drilling.

Rain hoods are used to prevent settling and building up of liquids, corrosive solids, minerals, dust, dirt and debris on top of an electrical enclosure. If corrosive liquids and solids settle and build up on top of an enclosure, the integrity of the coating and material may be compromised which may lead to corrosion and ingress of liquids and solids into the enclosure. Without maintenance, this may compromise internal electrical components and could increase risk of electric shock.

IP Enclosures rain hoods are easily fitted onto IP Enclosures electrical enclosures. All IP Enclosures electrical enclosures are manufactured with nutserts to accommodate optional rain hoods without drilling to ensure that the IP rating is maintained. Rain hoods are provided with fasteners.

STEEL RANGE

Material: 1.5mm galvanised steel sheet

Surface Treatment: UL approved epoxy polyester powder coated with a textured finish. 80-120 micron average thickness.

Standard colour: RAL7035.

STAINLESS STEEL RANGE

Material: 1.2-1.5mm Grade 316/316L Stainless Steel.

STEEL



Size W x D (mm)	Part Number Rain Hood	Part Number Suffix Optional Colours
200 x 150	IP-PSRH2015	-BLK -OR -RED
300 x 150	IP-PSRH3015	-BLK -OR -RED
300 x 200	IP-PSRH3020	-BLK -OR -RED
400 x 150	IP-PSRH4015	-BLK -OR -RED
400 x 200	IP-PSRH4020	-BLK -OR -RED
400 x 250	IP-PSRH4025	-BLK -OR -RED
500 x 200	IP-PSRH5020	-BLK -OR -RED
500 x 250	IP-PSRH5025	-BLK -OR -RED
600 x 200	IP-PSRH6020	-BLK -OR -RED
600 x 250	IP-PSRH6025	-BLK -OR -RED
600 x 300	IP-PSRH6030	-BLK -OR -RED
800 x 200	IP-PSRH8020	-BLK -OR -RED
800 x 300	IP-PSRH8030	-BLK -OR -RED
800 x 400	IP-PSRH8040	-BLK -OR -RED
1000 x 300	IP-PSRH10030	-BLK -OR -RED
1000 x 400	IP-PSRH10040	-BLK -OR -RED
1200 x 300	IP-PSRH12030	-BLK -OR -RED
1200 x 400	IP-PSRH12040	-BLK -OR -RED

Size W x D (mm)	Part Number Rain Hood
200 x 150	IP-SSRH2015
300 x 150	IP-SSRH3015
300 x 200	IP-SSRH3020
400 x 150	IP-SSRH4015
400 x 200	IP-SSRH4020
400 x 250	IP-SSRH4025
500 x 200	IP-SSRH5020
500 x 250	IP-SSRH5025
600 x 200	IP-SSRH6020
600 x 250	IP-SSRH6025
600 x 300	IP-SSRH6030
800 x 200	IP-SSRH8020
800 x 300	IP-SSRH8030
800 x 400	IP-SSRH8040
1000 x 300	IP-SSRH10030
1000 x 400	IP-SSRH10040
1200 x 300	IP-SSRH12030
1200 x 400	IP-SSRH12040



Accessories

Shelf Kits

SHL



IP Enclosures provide a range of adjustable component shelf kits for wall mounted electrical enclosures.

COMPONENT SHELF (Height Adjustable)

Shelf systems have many uses and can be used for component storage, separation and battery storage. Fixed shelves are pressed to provide strength and are provided with vertical rails and fasteners for ease of installation. Multiple shelves can be fitted into each cabinet and shelves can be fully adjusted to the correct positions.

Material: 1.2 to 1.5 mm galvanised steel sheet

Shelf Rating: 75kg



Part Number	Size	Shelf Rating
SKU	H x W x D (mm)	Kg
IP-SHL6030	600 H x 600 W x 300 D	75
IP-SHL6040	600H x 600 W x 400 D	75
IP-SHL8030	800H x 800 W x 300 D	75
IP-SHL8040	800H x 800 W x 400 D	75
IP-SHL10030	1000H x 1000 W x 300 D	75
IP-SHL10040	1000H x 1000 W x 400 D	75
IP-SHL12030	1200H x 1200 W x 300 D	75
IP-SHL12040	1200H x 1200 W x 400 D	75

Accessories

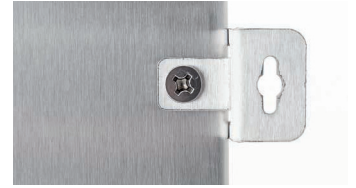
Mounting Brackets & Stands



IP Enclosures provide a range of electrical enclosure mounting solutions including pole mounting brackets.

WALL MOUNT BRACKETS (Set of 4)

Part Number	Description
IP-WMBKIT	Wall Mount Bracket Kit (4 Brackets including fasteners)
IP-SSWMBKIT	Stainless Steel Wall Mount Bracket Kit (4 Brackets including fasteners)



U-CHANNEL PROFILES

Steel

Part Number	Length (mm)
IP-PMP200	200
IP-PMP300	300
IP-PMP400	400
IP-PMP500	500
IP-PMP600	600
IP-PMP1200	1200

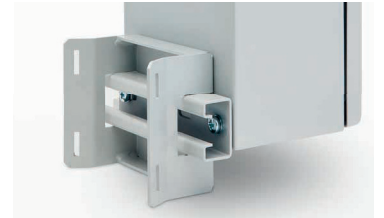
Stainless Steel

Part Number	Length (mm)
IP-SSPMP200	200
IP-SSPMP300	300
IP-SSPMP400	400
IP-SSPMP500	500
IP-SSPMP600	600
IP-SSPMP1200	1200



POLE MOUNT BRACKETS (To suit large variable diameter poles)

Part Number	Description
IP-PMB	Pole Mount Bracket
IP-SSPMB	Stainless Steel Pole Mount Bracket



POLE MOUNT CLAMPS

Steel

Stainless Steel

Part Number	Part Number	Description
IP-PMSC43	IP-SSPMSC43	Ø43 Pole Mount Clamp to suit 32NB Pipe
IP-PMSC48	IP-SSPMSC48	Ø48 Pole Mount Clamp to suit 40NB Pipe
IP-PMSC60	IP-SSPMSC60	Ø60 Pole Mount Clamp to suit 50NB Pipe
IP-PMSC89	IP-SSPMSC89	Ø89 Pole Mount Clamp to suit 80NB Pipe
IP-PMSC115	IP-SSPMSC115	Ø115 Pole Mount Clamp to suit 100NB Pipe
IP-PMSC140	IP-SSPMSC140	Ø140 Pole Mount Clamp to suit 125NB Pipe
IP-PMSC165	IP-SSPMSC165	Ø165 Pole Mount Clamp to suit 150NB Pipe
IP-PMSC220	IP-SSPMSC220	Ø220 Pole Mount Clamp to suit 200NB Pipe

NOTE: Includes 2 x Channel Spring Nuts and Washers



PLINTHS (100mm High Base)

Steel



Stainless Steel

Part Number	W x D (mm)	Suffix	Part Number	W x D (mm)
IP-PLINTH6030	600W x 300D	-BLK -OR	IP-SSPLINTH6030	600W x 300D
IP-PLINTH6040	600W x 400D	-BLK -OR	IP-SSPLINTH6040	600W x 400D
IP-PLINTH8030	800W x 300D	-BLK -OR	IP-SSPLINTH8030	800W x 300D
IP-PLINTH8040	800W x 400D	-BLK -OR	IP-SSPLINTH8040	800W x 400D
IP-PLINTH10030	1000W x 300D	-BLK -OR	IP-SSPLINTH10030	1000W x 300D
IP-PLINTH10040	1000W x 400D	-BLK -OR	IP-SSPLINTH10040	1000W x 400D
IP-PLINTH12030	1200W x 300D	-BLK -OR	IP-SSPLINTH12030	1200W x 300D
IP-PLINTH12040	1200W x 400D	-BLK -OR	IP-SSPLINTH12040	1200W x 400D



Accessories

Earth Kits, 19" Rails, & Plan Pockets



IP Enclosures provide a wide range of accessories including wiring plan pockets. This includes self-adhesive polycarbonate, steel or stainless steel wiring plan pockets.

Accessories | Miscellaneous

Earthing Kits

Standard earthing kits are available. Earthing kits consist of:

- Earth wire with ring connection
- 2 x M6 Nuts (to suit electrical enclosure earth connection points)
- Earth sticker labels and instruction diagram

Part Number	Description
IP-EK01	Standard Earthing Kit



19" Data Rack Rail Kits

Convert a standard 600mm wide electrical enclosure into an IP66 19" Data Rack using our 19" Data Rack Kits. Simply fit and tighten nuts. **Material:** Grade 316 Stainless Steel

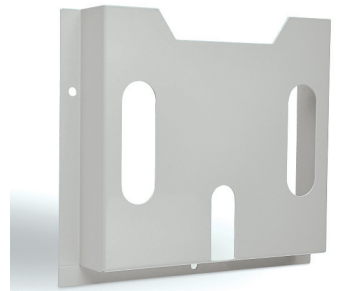
Part Number	Description
IP-SS19R600	19" 11RU to suit 600 H x 600 W Electrical Enclosure
IP-SS19R800	19" 16RU to suit 800 H x 600 W Electrical Enclosure



Wiring Plan Pockets

A4 wiring plan pockets are available in self-adhesive polycarbonate, steel or stainless steel.

Part Number	Description
IP-PCPPA4	A4 wiring plan pocket, Self-Adhesive Polycarbonate
IP-PSPPA4	A4 wiring plan pocket, Powdercoated Steel
IP-SSPPA4	A4 wiring plan pocket, 316 Stainless Steel





IP ENCLOSURES NZ GP LIMITED

NZBN: 9429049565881

Head Office: 100 Montgomerie Rd, Auckland, 2023, New Zealand.

sales@ipenclosures.co.nz | www.ipenclosures.co.nz

Telephone: 09 884 9190

GLOBAL DISTRIBUTION: AU UK Europe USA UAE Asia-Pacific